



City of Melrose
Melrose School Committee
Regular Meeting

Tuesday, March 10, 2026, 7:00 PM
562 Main Street, Melrose, MA 02176
Council Chamber, First Floor, Melrose City Hall

AGENDA

NOTE

To watch this meeting live, visit mmtv3.org or local cable station MMTV (Comcast - Ch 3, 15, 22 or Verizon - Ch 37, 38, 39)

To speak during Public Comment, use zoom link <https://cityofmelrose-org.zoom.us/my/specialmtg>
Meeting ID: 382 229 5129 Passcode: 665001

1. CALL TO ORDER/PLEDGE

Margaret Raymond-Driscoll	Member
Jen Grigoraitis	Mayor
Matt Hartman	Vice Chair
Melissa Holleran	Member
Seamus Kelley	Chair
Sheri Leo	Member
Jen Razi-Thomas	Member
Cari Berman	Interim Superintendent

2. EXECUTIVE SESSION

1. To conduct strategy sessions in preparation for negotiations with non-union personnel Cari Berman.

3. RETURN FROM EXECUTIVE SESSION

4. PUBLIC COMMENT

5. ANNOUNCEMENTS OF THE SUPERINTENDENT

1. Updates: Registration
2. Report: Personnel
3. Report: DESE Integrated Monitoring Review Report

6. REPORT OF THE STUDENT REPRESENTATIVES

7. CONSENT AGENDA

1. Warrants

FY26 School - [S26062](#) - \$527,879.32

FY26 Officials - [S26063](#) - \$740.00

FY26 February High School Student Activity Wire - [S26064](#) - \$16,718.94

FY26 March Debit Card - [S26065](#) - \$1625.00

FY26 February Meals Tax - [S26066](#) - \$30.72

FY26 February MVMMS Student Activity Wire - [S26067](#) - \$175.00

FY26 Postage Wire - [S26068](#) - \$5,000.00

2. Regular Meeting Minutes: February 24, 2026

3. MHS Field Trip: Germany 2027

4. Surplus Request

8. SUBCOMMITTEES (COMMITTEE OF THE WHOLE)

1. Finance and Facilities - Margaret Driscoll/Melissa Holleran

A Vote: Monthly Budget Summary/Revolving Accounts

B Discussion: FY27 Fees

C Informational: City and MPS Budget Overview

2. Educational Programs and Personnel - Jen Razi-Thomas/Sheri Leo

A Informational Review: SOA Report

B Discussion: Mid-year Data

3. Policy and Planning - Matt Hartman/Margaret Driscoll

9. ANNOUNCEMENTS OF THE CHAIR

1. Report: Rolling Agenda

2. Report: Outreach

10. ADJOURN



MELROSE PUBLIC SCHOOLS ADMINISTRATIVE OFFICES

360 LYNN FELLS PARKWAY, MELROSE, MA 02176

TELEPHONE: (781) 662-2000 FAX: (781) 979-2149

WWW.MELROSESCHOOLS.COM

CARI BERMAN, CAGS, INTERIM SUPERINTENDENT

KENNETH KELLEY, MAT, MED, INTERIM DEPUTY SUPERINTENDENT

To: Melrose School Committee
From: Ken Kelley, Interim Deputy Supt.
Date: March 10, 2026
Re: Personnel update Feb 2026

Hiring:

Employee	Position	Location	Hire/Effective Date
Amanda Quimby	Teacher	MVMMS	2/12/26
Brianna Gately	Paraprofessional	Roosevelt	2/12/26

Resignations/Separations/Retirements:

Name	Position	Location	Effective Date



Melrose Public Schools

INTEGRATED MONITORING REVIEW REPORT

For Group B Universal Standards

Office of Public School Monitoring

Dates of Onsite Visit: December 16-17, 2025

Date of Report: February 9, 2026

Corrective Action Plan Due: March 16, 2026

Department of Elementary and Secondary Education Onsite Team Members:
Dee Wyatt, Chairperson
Moses Nduati



Pedro Martinez
Commissioner of Elementary and Secondary Education

**MASSACHUSETTS DEPARTMENT OF ELEMENTARY AND SECONDARY EDUCATION
INTEGRATED MONITORING REVIEW REPORT**

Melrose Public Schools

INTEGRATED MONITORING REVIEW REPORT INTRODUCTION	3
INTEGRATED MONITORING REVIEW DETAILS	6
DEFINITION OF COMPLIANCE RATINGS	7
SUMMARY OF COMPLIANCE CRITERIA RATINGS	8
SUMMARY OF PRE-FINDING CORRECTIONS	8
SPECIAL EDUCATION	9

**MASSACHUSETTS DEPARTMENT OF ELEMENTARY AND SECONDARY EDUCATION
OFFICE OF PUBLIC SCHOOL MONITORING
INTEGRATED MONITORING REVIEW REPORT INTRODUCTION**

During the 2025-2026 school year, Melrose Public Schools participated in an Integrated Monitoring Review (IMR) conducted by the Department of Elementary and Secondary Education's (DESE or Department) Office of Public School Monitoring (PSM). The purpose of the Integrated Monitoring Review is to monitor compliance with regulatory requirements focusing on special education and civil rights.

Components of the Integrated Monitoring Review



Integrated Monitoring is one of eight components of a state's general supervision system. One aspect of Integrated Monitoring is the Integrated Monitoring Review. Each school district, charter school, vocational school, and virtual school undergoes an Integrated Monitoring Review every three years. The Department's Office of Public School Monitoring (PSM) is responsible for conducting these reviews and works closely with offices throughout the Department including, but not limited to, the Office of Special Education Planning and Policy (SEPP), Problem Resolution System Office (PRS), and the Office of Approved Special Education Schools (OASES) to promote cohesion and collaboration across the Department's general supervision system. As set forth in the diagram above, Integrated Monitoring Review is one of the multilayered, cohesive, and formal processes employed by the Department to examine and evaluate all Local Education Agencies' (LEA) implementation of IDEA with a particular emphasis on educational results, functional outcomes, and compliance.

The monitoring cycle is posted at [Integrated Monitoring Review Three Year Cycle](#).

Regularly monitored standards are divided into two groups, known as Group A Universal Standards and Group B Universal Standards. Districts and schools are monitored on an alternate set of Universal Standards every three years.

Group A Universal Standards address:

- Student identification
- IEP development
- Programming and support services
- Equal opportunity

Group B Universal Standards address:

- Licensure and professional development
- Parent/student/community engagement
- Facilities and classroom observations
- Oversight
- Time and learning
- Equal access

The Department has also reserved a specific set of criteria, collectively known as Focused Standards, which are reviewed if the Department deems appropriate due to concerns with those particular standards. In those circumstances, the identified Focused Standards are assessed in addition to the Universal Standards.

Universal Standards and Focused Standards are aligned with the following regulations:

Special Education (SE)

- Selected requirements from the federal Individuals with Disabilities Education Act (IDEA), 20 U.S.C. § 1400 *et seq* and accompanying regulations at 34 CFR Part 300.
- Massachusetts General Law Chapter 71B, and the Massachusetts Special Education regulations (603 CMR 28.00).

Civil Rights Methods of Administration and Other General Education Requirements (CR)

- Specific federal civil rights requirements, including requirements under the Every Student Succeeds Act (ESSA); Title VI of the Civil Rights Act of 1964; the Equal Educational Opportunities Act of 1974; Title IX of the Education Amendments of 1972; Section 504 of the Rehabilitation Act of 1973; and Title II of the Americans with Disabilities Act of 1990, together with select state requirements under M.G.L. c. 76, § 5 and M.G.L. c. 269 §§ 17 through 19.
- Specific requirements from the Massachusetts Physical Restraint regulations (603 CMR 46.00).
- Specific requirements from the Massachusetts Student Learning Time regulations (603 CMR 27.00).
- Specific requirements from the Massachusetts Student Records regulations (603 CMR 23.00).
- Various requirements under other federal and state laws and regulations.

Integrated Monitoring Review Process:

Discovery: During the Discovery stage, the PSM chairperson analyzes data and information to prepare for the onsite visit. The chairperson also reviews documents submitted by the LEA.

Engagement: The Engagement stage of the Integrated Monitoring Review includes all activities conducted onsite and/or virtually through the issuance of the Integrated Monitoring Review Report. Such activities may include record review, interviews, and observations.

Close-out: Once the Report is issued, the Close-out stage begins for the schools and districts with any identified findings of noncompliance. The Close-out stage includes the development of the Correction Action Plan and completion of subsequent progress reports to ensure all

instances of noncompliance are resolved within one year of the issuance of the Integrated Monitoring Review Report.

PSM Team:

Depending upon the size of a school district and the number of special education programs to be reviewed, a team of one to four Department staff members conducts onsite activities over one to five days.

Report for Integrated Monitoring Reviews:

The Integrated Monitoring Review Report will be issued within approximately 30 days of the conclusion of the onsite visit.

Pre-finding Corrections:

During the Discovery and Engagement stages of the review, PSM staff may find that the district/school violated an IDEA requirement prior to the issuance of a finding in the Integrated Monitoring Review Report. In such cases, PSM staff may implement the pre-finding correction protocol. If PSM staff verify that the identified noncompliance is resolved prior to the issuance of the report, no finding is made. However, a list of any pre-finding corrections will be included in the Integrated Monitoring Review Report. More information regarding the pre-finding correction protocol can be found in the PSM procedures at <https://www.doe.mass.edu/psm/procedures.docx>.

Ratings: In the Integrated Monitoring Review Report, the onsite team gives a rating for each compliance criterion it has reviewed; those ratings are “Commendable,” “Implemented,” “Implementation in Progress,” “Partially Implemented,” “Not Implemented,” “Not Applicable,” and “Prior Noncompliance - Corrective Action Under Review.”

The onsite team includes a comment in the Integrated Monitoring Review Report for each criterion that it rates “Commendable,” “Partially Implemented,” “Not Implemented,” or “Prior Noncompliance - Corrective Action Under Review,” explaining the basis for the rating.

Corrective Action: Where criteria are found “Partially Implemented” or “Not Implemented,” a corrective action plan (CAP) is developed to bring those areas into compliance with the relevant statutes and regulations. Department staff work with districts and charter schools on the development of an appropriate CAP.

PSM staff also provide ongoing technical assistance as the school or district is implementing the approved CAP. **School districts and charter schools must demonstrate effective resolution of noncompliance identified by the Department as soon as possible but in no case later than one year from the issuance of the Department’s Final Monitoring Report.**

Where criteria are rated “Prior Noncompliance - Corrective Action Under Review,” the district/charter school will work with staff from the specific Department office that identified the noncompliance to develop a corrective action plan.

For more information regarding the Integrated Monitoring Review Process, including district and parent resources, please visit < <https://www.doe.mass.edu/psm/integrated/default.html>>.

INTEGRATED MONITORING REVIEW DETAILS

Melrose Public Schools

The Massachusetts Department of Elementary and Secondary Education conducted an Integrated Monitoring Review in Melrose Public Schools during the week of December 15, 2025, to evaluate the implementation of Group B Universal Standards in the program areas of special education, civil rights, and other related general education requirements. The team appreciated the opportunity to interview staff and parents, to observe classroom facilities, and to review the programs underway in the district.

In preparing this report, the team reviewed extensive written documentation regarding the operation of the district's programs, together with information gathered by means of the following Department program review methods:

District Civil Rights Self-Assessment Phase:

- Review of civil rights documentation for required elements including document uploads.
- Upon completion, the civil rights self-assessment was submitted to the Department for review.

Discovery Phase:

- Review of key data points focused on educational results and functional outcomes. For more details regarding the data review, please see the PSM procedures at <https://www.doe.mass.edu/psm/procedures.docx>.

Engagement Phase:

- Interviews of administrative and instructional staff consistent with those criteria selected for onsite verification.
- Interview of a special education parent advisory council (SEPAC) representative.
- Review of additional documents for special education and civil rights.
- Review of student-specific documentation to determine whether procedural requirements regarding child find have been met.
- Surveys of parents of students in special education: Parents of students in special education were sent a survey that solicited information regarding their experiences with the district's implementation of special education programs, related services, and procedural requirements.
- Observations of classrooms and other facilities: The onsite team visited a sample of classrooms and other school facilities used in the delivery of programs and services to determine general levels of compliance with program requirements.

The Integrated Monitoring Review Report includes those criteria that were found by the team to be implemented in a "Commendable" manner, as well as criteria receiving a rating of "Partially Implemented," "Not Implemented," "Implementation in Progress", and "Prior Noncompliance - Corrective Action Under Review." (Refer to the "Definition of Compliance Ratings" section of the report.) Reports do not include criteria receiving a rating of "Implemented" or "Not Applicable." This will allow the district and the Department to focus their efforts on those areas requiring corrective action. Districts are expected to incorporate the corrective actions into their district and school improvement plans, including their professional development plans.

DEFINITION OF COMPLIANCE RATINGS

Commendable	Any requirement or aspect of a requirement implemented in an exemplary manner significantly beyond the requirements of law or regulation.
Implemented	The requirement is met in all important aspects.
Implementation in Progress	This rating is used for criteria containing new or updated legal requirements; the district has implemented any old requirements contained in the criterion and is training staff or beginning to implement the new requirements in such a way that the onsite team anticipates that the new requirements will be implemented by the end of the school year.
Partially Implemented	The requirement, in one or several important aspects, is not entirely met.
Not Implemented	The requirement is totally or substantially not met.
Prior Noncompliance - Corrective Action Under Review	A finding of noncompliance was made by another office in the Department and the school/district is currently undergoing corrective action activities.
Not Applicable	The requirement does not apply to the school district or charter school.

Melrose Public Schools

SUMMARY OF COMPLIANCE CRITERIA RATINGS

	Universal Standards Special Education	Universal Standards Civil Rights and Other General Education Requirements
IMPLEMENTED	SE 15, SE 32, SE 35, SE 36, SE 50, SE 52, SE 52A, SE 54, SE 55, SE 56	CR 3, CR 7, CR 7A, CR 7B, CR 7C, CR 8, CR 10A, CR 10B, CR 10C, CR 12A, CR 16, CR 17A, CR 20, CR 21, CR 22, CR 23, CR 24, CR 25
PARTIALLY IMPLEMENTED	SE 51	
NOT IMPLEMENTED	None	
NOT APPLICABLE	None	

SUMMARY OF PRE-FINDING CORRECTIONS

The pre-finding correction protocol was implemented for the following criterion prior to the issuance of the Integrated Monitoring Report and all instances of noncompliance were resolved by the district. Evidence of correction submitted was reviewed and verified by the Department.

SE 52: Appropriate certifications/licenses or other credentials – related service providers

SPECIAL EDUCATION

**LEGAL STANDARDS,
COMPLIANCE RATINGS AND
FINDINGS**

CRITERION	
------------------	--

NUMBER	Legal Standard	
SE 51	<p>Appropriate special education teacher licensure Except at Commonwealth charter schools, individuals who design and/or provide direct special education services described in IEPs are appropriately licensed.</p> <p>Commonwealth Charter Schools – Special Education Teacher Qualifications: To come into compliance with IDEA, Commonwealth charter schools must use “qualified” teachers to provide specialized instruction or have a “qualified” teacher consult with or provide direct supervision for someone who is not qualified but is delivering specialized instruction. This is an IDEA requirement. “Qualified” teachers must hold a valid license in special education or have successfully completed an undergraduate or graduate degree in an approved special education program. See also Charter School Technical Advisory 20-1: Educator Qualifications in Commonwealth and Horace Mann Charter Schools Commonwealth Charter School Staff Qualification Requirements for IEP Services Delivery (Updated April 27, 2012) at http://www.doe.mass.edu/charter/sped/staffqualifications.html .</p>	
	State Requirements	Federal Requirements
	M.G.L. c. 71, s. 38G; s. 89(qq); 603 CMR 1.07; 7.00; 28.02(3)	34 CFR 300.156 IDEA § 34 CFR 300.156(a)
	Rating: Partially Implemented	District Response Required: Yes

Department of Elementary and Secondary Education Findings:

A review of documents indicated that three teachers who design and provide direct special education services described in IEPs are not appropriately licensed.

This Integrated Monitoring Review Report is also available at:

<https://www.doe.mass.edu/psm/tfm/reports/>.

Profile information supplied by each charter school and school district, including information for individual schools within districts, is available at

<http://profiles.doe.mass.edu/>.

WBMS IMR Final Report 2026

File Name: Melrose Public Schools IMR Report

Last Revised on: February 9, 2026

Prepared by: AP/AM/DW

PRELIMINARY CITY OF MELROSE WARRANT REPORT

DATE: 03/10/2026
WARRANT: S26062
AMOUNT: 527,879.32

Kerriann Golden
CFO/City Auditor

To the Accounting Office:
The following named bills of the School Department amounting in the agreed to total above are hereby approved and you are requested to place them on a warrant payment.

Approved: _____

PRELIMINARY CITY OF MELROSE WARRANT REPORT

Detail Invoice List

WARRANT: S26062 03/10/2026

CASH ACCOUNT: 00		104200		EASTERN VENDOR 1132							
VENDOR		REMIT	PO	TYPE	DUE DATE	INVOICE	AMOUNT	DOCUMENT	VOUCHER	CHECK	
20661	KING BRIAN TRANSPORTA	0002	265333	INV	03/10/2026	776		345296	470589		
	ACCOUNT DETAIL					LINE AMOUNT					
	1 1141400 53450	3300	SPED	IN TRAN		3,945.00					
							3,945.00				
						CHECK TOTAL	3,945.00				
18325	AMAZON CAPITAL SERVIC	0004	26301121	INV	03/10/2026	1FWY-73CC-7169		345292	470585		
	ACCOUNT DETAIL					LINE AMOUNT					
	1 1197000 54610	1210	ADMIN	CENT SUPP		50.98					
							50.98				
18325	AMAZON CAPITAL SERVIC	0004	26307067	INV	03/10/2026	1PMJ-LVX9-CMHQ		345362	470656		
	ACCOUNT DETAIL					LINE AMOUNT					
	1 18512 55500	6300	ED STAT	GEN SUPP		395.22					
							395.22				
18325	AMAZON CAPITAL SERVIC	0004	26307067	INV	03/10/2026	1HXQ-PRF4-JXHJ		345363	470657		
	ACCOUNT DETAIL					LINE AMOUNT					
	1 18512 55500	6300	ED STAT	GEN SUPP		11.79					
							11.79				
18325	AMAZON CAPITAL SERVIC	0004	26317042	INV	03/10/2026	173J-Q6QV-NJMJ		345368	470662		
	ACCOUNT DETAIL					LINE AMOUNT					
	1 1117350 55500	2430	WINTHROP	WN GEN SUP		18.36					
							18.36				
18325	AMAZON CAPITAL SERVIC	0004	26317043	INV	03/10/2026	1TGG-X6P3-PKQF		345369	470663		
	ACCOUNT DETAIL					LINE AMOUNT					
	1 1117350 55500	2430	WINTHROP	WN GEN SUP		287.40					
							287.40				
18325	AMAZON CAPITAL SERVIC	0004	26312013	INV	03/10/2026	1WL1-4WT3-C1NK		345437	470737		
	ACCOUNT DETAIL					LINE AMOUNT					
	1 1112350 55500	2430	HOOVER	HV GEN SUP		82.25					
							82.25				
18325	AMAZON CAPITAL SERVIC	0004	26312013	INV	03/10/2026	174V-PVWC-GR4X		345439	470738		
	ACCOUNT DETAIL					LINE AMOUNT					
	1 1112350 55500	2430	HOOVER	HV GEN SUP		18.89					
							18.89				
18325	AMAZON CAPITAL SERVIC	0004	26312019	INV	03/10/2026	1DWL-THNJ-44FP		345440	470739		
	ACCOUNT DETAIL					LINE AMOUNT					
	1 1112350 55500	2430	HOOVER	HV GEN SUP		79.99					
							79.99				

PRELIMINARY CITY OF MELROSE WARRANT REPORT

Detail Invoice List

WARRANT: S26062 03/10/2026

CASH ACCOUNT: 00		104200		EASTERN VENDOR 1132							
VENDOR		REMIT	PO	TYPE	DUE DATE	INVOICE	AMOUNT	DOCUMENT	VOUCHER	CHECK	
18325	AMAZON CAPITAL SERVIC	0004	26314034	INV	03/10/2026	1TF4-K6M4-J3CL		345441	470740		
	ACCOUNT DETAIL					LINE AMOUNT					
	1 1114126 55502	2410	LN P/E	LN WEL MAT		115.23					
							115.23				
18325	AMAZON CAPITAL SERVIC	0004	26312020	INV	03/10/2026	1NGG-GX9V-Y1TR		345442	470741		
	ACCOUNT DETAIL					LINE AMOUNT					
	1 1112102 55500	2415	HV ART	HV ART SUP		27.96					
							27.96				
18325	AMAZON CAPITAL SERVIC	0004	26307061	INV	03/10/2026	1QDV-GW7X-GHDC		345573	470875		
	ACCOUNT DETAIL					LINE AMOUNT					
	1 18512 55500	6300	ED STAT	GEN SUPP		477.47					
							477.47				
18325	AMAZON CAPITAL SERVIC	0004	26307061	INV	03/10/2026	1NVR-DN9Y-VCGN		345574	470876		
	ACCOUNT DETAIL					LINE AMOUNT					
	1 18512 55500	6300	ED STAT	GEN SUPP		69.77					
							69.77				
18325	AMAZON CAPITAL SERVIC	0004	26307068	INV	03/10/2026	1YVG-VGG3-6T3Y		345575	470877		
	ACCOUNT DETAIL					LINE AMOUNT					
	1 18512 55500	6300	ED STAT	GEN SUPP		329.35					
							329.35				
18325	AMAZON CAPITAL SERVIC	0004	26307068	INV	03/10/2026	14NJ-RKDM-79LD		345576	470878		
	ACCOUNT DETAIL					LINE AMOUNT					
	1 18512 55500	6300	ED STAT	GEN SUPP		63.95					
							63.95				
18325	AMAZON CAPITAL SERVIC	0004	26307078	INV	03/10/2026	1FTT-FDF9-DW1Y		345661	470964		
	ACCOUNT DETAIL					LINE AMOUNT					
	1 18512 55500	6300	ED STAT	GEN SUPP		58.96					
							58.96				
18325	AMAZON CAPITAL SERVIC	0004	26307077	INV	03/10/2026	1LDQ-1LWW-XHJR		345662	470965		
	ACCOUNT DETAIL					LINE AMOUNT					
	1 18512 55500	6300	ED STAT	GEN SUPP		17.99					
							17.99				
18325	AMAZON CAPITAL SERVIC	0004	26307083	INV	03/10/2026	13VH-7J7G-CXJ1		345663	470967		
	ACCOUNT DETAIL					LINE AMOUNT					
	1 18512 55500	6300	ED STAT	GEN SUPP		51.03					
							51.03				

PRELIMINARY CITY OF MELROSE WARRANT REPORT

Detail Invoice List

WARRANT: S26062 03/10/2026

CASH ACCOUNT: 00		104200		EASTERN VENDOR 1132							
VENDOR		REMIT	PO	TYPE	DUE DATE	INVOICE	AMOUNT	DOCUMENT	VOUCHER	CHECK	
18325	AMAZON CAPITAL SERVIC	0004	26396119	INV	03/10/2026	1XLY-74YL-7KPW		345666	470970		
	ACCOUNT DETAIL					LINE AMOUNT					
	1 1196000 55502 2410		CUR&PDEV	CR INS MAT		145.94	145.94				
18325	AMAZON CAPITAL SERVIC	0004	26396119	INV	03/10/2026	14X6-9VNK-MWV4		345667	470971		
	ACCOUNT DETAIL					LINE AMOUNT					
	1 1196000 55502 2410		CUR&PDEV	CR INS MAT		48.87	48.87				
18325	AMAZON CAPITAL SERVIC	0004	26396127	INV	03/10/2026	1NC1-MN1F-67JG		345668	470972		
	ACCOUNT DETAIL					LINE AMOUNT					
	1 1196000 55502 2410		CUR&PDEV	CR INS MAT		17.98	17.98				
						CHECK TOTAL	2,369.38				
19700	AMERICAN ARBITRATION	0003	26301133	INV	03/10/2026	01-26-0000-8241-2-JM		345577	470879		
	ACCOUNT DETAIL					LINE AMOUNT					
	1 1199000 53401 1430		SYS-WIDE	LEGAL SVCS		395.00	395.00				
						CHECK TOTAL	395.00				
631300	NRT BUS INC	0003	26390001	INV	03/10/2026	INV180073		345117	470402		
	ACCOUNT DETAIL					LINE AMOUNT					
	1 1577264 52400 3300		CONT SRV	TRANSPORT		42,120.00	42,120.00				
631300	NRT BUS INC	0003	26390001	INV	03/10/2026	INV200340		345118	470403		
	ACCOUNT DETAIL					LINE AMOUNT					
	1 1577264 52400 3300		CONT SRV	TRANSPORT		42,120.00	42,120.00				
						CHECK TOTAL	84,240.00				
134305	THE CARNIVAL PARTY LL	0000	26307079	INV	03/10/2026	2026668		345113	470398		
	ACCOUNT DETAIL					LINE AMOUNT					
	1 18512 52400 6300		ED STAT	CONTR SVCS		750.00	750.00				
134305	THE CARNIVAL PARTY LL	0000	26307081	INV	03/10/2026	202653		345114	470399		
	ACCOUNT DETAIL					LINE AMOUNT					
	1 18512 52400 6300		ED STAT	CONTR SVCS		750.00	750.00				

PRELIMINARY CITY OF MELROSE WARRANT REPORT

Detail Invoice List

WARRANT: S26062 03/10/2026

CASH ACCOUNT: 00		104200		EASTERN VENDOR 1132						
VENDOR	REMIT	PO	TYPE	DUE DATE	INVOICE	AMOUNT	DOCUMENT	VOUCHER	CHECK	
					CHECK TOTAL	1,500.00				
24329	COLLABORATIVE LEARNIN	0000	26341082	INV	03/10/2026	2025SD-6	345398	470695		
	ACCOUNT DETAIL				LINE AMOUNT					
1	1475264	52400	9300	CONT SVC	CONTR SVCS	2,191.52				
					CHECK TOTAL	2,191.52				
169793	COMCAST	0001	26301024	INV	03/10/2026	02092026	345288	470581		
	ACCOUNT DETAIL				LINE AMOUNT					
1	1199000	53614	4130	SYS-WIDE	PHONE SW	12.59				
					CHECK TOTAL	12.59				
172245	COMMUNITY THERAPEUTIC	0000	26341031	INV	03/10/2026	SM February 2026	345371	470665		
	ACCOUNT DETAIL				LINE AMOUNT					
1	1141400	53901	9300	SPED	NON-PUBLIC	8,833.80				
					CHECK TOTAL	8,833.80				
23720	CONSTELLATIONS BEHAVI	0001	26341022	INV	03/10/2026	13135765	345251	470543		
	ACCOUNT DETAIL				LINE AMOUNT					
1	1475264	52400	2320	CONT SVC	CONTR SVCS	15,475.50				
					CHECK TOTAL	15,475.50				
186250	COTTING SCHOOL INC	0000	26341107	INV	03/10/2026	INV3773	345252	470544		
	ACCOUNT DETAIL				LINE AMOUNT					
1	1475264	52400	2720	CONT SVC	CONTR SVCS	2,085.00				
							2,085.00			
186250	COTTING SCHOOL INC	0000	26341107	INV	03/10/2026	INV3774	345253	470545		
	ACCOUNT DETAIL				LINE AMOUNT					
1	1475254	52400	2320	CONT SVC	ASSESS/TSE	956.65				
2	1475264	52400	2720	CONT SVC	CONTR SVCS	1,093.35				
							2,050.00			
					CHECK TOTAL	4,135.00				

PRELIMINARY CITY OF MELROSE WARRANT REPORT

Detail Invoice List

WARRANT: S26062 03/10/2026

CASH ACCOUNT: 00 104200		EASTERN VENDOR 1132									
VENDOR		REMIT	PO	TYPE	DUE DATE	INVOICE	AMOUNT	DOCUMENT	VOUCHER	CHECK	
23797	CYBER COMMUNICATIONS	0000	26301123	INV	03/10/2026	100013211-1		345254	470546		
	ACCOUNT DETAIL					LINE AMOUNT					
	1 135025 55503 2430		COPS REV	CITY APPRO		40.00					
							40.00				
						CHECK TOTAL	40.00				
84000	DICK BLICK	0000	26331090	INV	03/10/2026	7361831		345365	470659		
	ACCOUNT DETAIL					LINE AMOUNT					
	1 1131000 55500 2430		H.S.	HS GEN SUP		36.34					
							36.34				
84000	DICK BLICK	0000	26331090	INV	03/10/2026	7423820		345367	470661		
	ACCOUNT DETAIL					LINE AMOUNT					
	1 1131000 55500 2430		H.S.	HS GEN SUP		3.77					
							3.77				
						CHECK TOTAL	40.11				
15213	SJ TRANSPORTATION LLC	0001	265316	INV	03/10/2026	FEBRUARY 2026-1		345657	470960		
	ACCOUNT DETAIL					LINE AMOUNT					
	1 1141400 53450 3300		SPED	IN TRAN		8,450.00					
							8,450.00				
15213	SJ TRANSPORTATION LLC	0001	265316	INV	03/10/2026	FEBRUARY 2026-2		345658	470961		
	ACCOUNT DETAIL					LINE AMOUNT					
	1 1141400 53450 3300		SPED	IN TRAN		9,840.00					
							9,840.00				
15213	SJ TRANSPORTATION LLC	0001	265316	INV	03/10/2026	FEBRUARY 2026-3		345659	470962		
	ACCOUNT DETAIL					LINE AMOUNT					
	1 1141400 53450 3300		SPED	IN TRAN		5,500.00					
							5,500.00				
15213	SJ TRANSPORTATION LLC	0001	265316	INV	03/10/2026	FEBRUARY 2026-4		345660	470963		
	ACCOUNT DETAIL					LINE AMOUNT					
	1 1141400 53450 3300		SPED	IN TRAN		5,005.00					
							5,005.00				
						CHECK TOTAL	28,795.00				
23700	DOCUSIGN INC	0001	26341154	INV	03/10/2026	111100638495		345578	470880		
	ACCOUNT DETAIL					LINE AMOUNT					
	1 1475265 55500 2410		SUP&MAT	INSTR MAT		3,878.54					
							3,878.54				

PRELIMINARY CITY OF MELROSE WARRANT REPORT

Detail Invoice List

WARRANT: S26062 03/10/2026

CASH ACCOUNT: 00		104200		EASTERN VENDOR 1132							
VENDOR	REMIT	PO	TYPE	DUE DATE	INVOICE	AMOUNT	DOCUMENT	VOUCHER	CHECK		
					CHECK TOTAL	3,878.54					
277600	FLINN SCIENTIFIC INC	0000	26331096	INV	03/10/2026	3245647	345487	470787			
	ACCOUNT DETAIL					LINE AMOUNT					
1	1131128 55500 2415	HS SCI	HS SCI SUP			179.77					
					CHECK TOTAL	179.77					
300150	THE MARGARET GIFFORD	0000	26341033	INV	03/10/2026	027047	345382	470676			
	ACCOUNT DETAIL					LINE AMOUNT					
1	1141400 53901 9300	SPED	NON-PUBLIC			7,124.44					
					CHECK TOTAL	7,124.44					
286382	HOPEFUL JOURNEYS EDUC	0000	26341028	INV	03/10/2026	022026CB	345372	470666			
	ACCOUNT DETAIL					LINE AMOUNT					
1	1141400 53901 9300	SPED	NON-PUBLIC			11,144.85					
						11,144.85					
286382	HOPEFUL JOURNEYS EDUC	0000	26341029	INV	03/10/2026	022026ML	345373	470667			
	ACCOUNT DETAIL					LINE AMOUNT					
1	1141400 53901 9300	SPED	NON-PUBLIC			11,144.85					
						11,144.85					
286382	HOPEFUL JOURNEYS EDUC	0000	26341030	INV	03/10/2026	022026NP	345374	470668			
	ACCOUNT DETAIL					LINE AMOUNT					
1	1141400 53901 9300	SPED	NON-PUBLIC			11,144.85					
						11,144.85					
286382	HOPEFUL JOURNEYS EDUC	0000	26341043	INV	03/10/2026	022026AM	345375	470669			
	ACCOUNT DETAIL					LINE AMOUNT					
1	1141400 53901 9300	SPED	NON-PUBLIC			11,144.85					
					CHECK TOTAL	44,579.40					
263010	4IMPRINT INC	0000	26307074	INV	03/10/2026	14756818	345250	470542			
	ACCOUNT DETAIL					LINE AMOUNT					
1	18512 55500 6300	ED STAT	GEN SUPP			297.51					
					CHECK TOTAL	297.51					

PRELIMINARY CITY OF MELROSE WARRANT REPORT

Detail Invoice List

WARRANT: S26062 03/10/2026

CASH ACCOUNT: 00		104200		EASTERN VENDOR 1132							
VENDOR		REMIT	PO	TYPE	DUE DATE	INVOICE	AMOUNT	DOCUMENT	VOUCHER	CHECK	
12942	INTERNATIONAL TRANSLA	0000	26341086	INV	03/10/2026	INV-04690		345648	470950		
	ACCOUNT DETAIL					LINE AMOUNT					
	1 1141400 52400 2320	SPED	OTH COST			649.00					
							649.00				
12942	INTERNATIONAL TRANSLA	0000	26396129	INV	03/10/2026	INV-04709		345707	471014		
	ACCOUNT DETAIL					LINE AMOUNT					
	1 1196000 52400 2110	CUR&PDEV	CR TRANS			319.50					
							319.50				
						CHECK TOTAL	968.50				
23446	LAURA IVES	0000	26341116	INV	03/10/2026	MEL2605		345591	470894		
	ACCOUNT DETAIL					LINE AMOUNT					
	1 1141400 52400 2320	SPED	OTH COST			4,275.00					
							4,275.00				
						CHECK TOTAL	4,275.00				
24515	JOSEPHS TRANSPORTATIO	0000	26335191	INV	03/10/2026	5331		345447	470746		
	ACCOUNT DETAIL					LINE AMOUNT					
	1 1135700 53450 3510	ATHL	AT TRANS			620.00					
							620.00				
						CHECK TOTAL	620.00				
394530	JUSTICE RESOURCE INST	0000	26341036	INV	03/10/2026	12450726MEL		345255	470547		
	ACCOUNT DETAIL					LINE AMOUNT					
	1 1141400 53901 9300	SPED	NON-PUBLIC			6,815.16					
							6,815.16				
394530	JUSTICE RESOURCE INST	0000	26341035	INV	03/10/2026	12450726MELLC		345256	470548		
	ACCOUNT DETAIL					LINE AMOUNT					
	1 1141400 53901 9300	SPED	NON-PUBLIC			6,815.16					
							6,815.16				
						CHECK TOTAL	13,630.32				
424800	LANDMARK SCHOOL OUTRE	0001	26341092	INV	03/10/2026	FY26-051946		345257	470549		
	ACCOUNT DETAIL					LINE AMOUNT					
	1 1475264 52400 2356	CONT SVC	CONTR SVCS			300.00					
							300.00				
						CHECK TOTAL	300.00				

PRELIMINARY CITY OF MELROSE WARRANT REPORT

Detail Invoice List

WARRANT: S26062 03/10/2026

CASH ACCOUNT: 00		104200		EASTERN VENDOR 1132							
VENDOR	REMIT	PO	TYPE	DUE DATE	INVOICE	AMOUNT	DOCUMENT	VOUCHER	CHECK		
					CHECK TOTAL	686.38					
22678	JOHN MACERO	0000	26301125	INV	03/10/2026	12	345370	470664			
	ACCOUNT DETAIL					LINE AMOUNT					
	1	1199000	52400	1410	SYS-WIDE	CONSULT SW	5,000.00				
					CHECK TOTAL	5,000.00					
10540	MANCHESTER ESSEX REGI	0000	26341044	INV	03/10/2026	3925 2.26	345381	470675			
	ACCOUNT DETAIL					LINE AMOUNT					
	1	1475264	52400	9400	CONT SVC	CONTR SVCS	6,295.90				
					CHECK TOTAL	6,295.90					
15447	MAXIM HEALTHCARE SERV	0001	26341074	INV	03/10/2026	V29435219	345259	470551			
	ACCOUNT DETAIL					LINE AMOUNT					
	1	1141400	53450	3300	SPED	IN TRAN	8,400.00				
					CHECK TOTAL	8,400.00					
542100	MELROSE SCHOOL FOOD S	0000	26396124	INV	03/10/2026	2605	345261	470553			
	ACCOUNT DETAIL					LINE AMOUNT					
	1	1477255	55500	2410	FY25SUPMAT	FY25SUPMAT	100.30				
					CHECK TOTAL	100.30					
555100	METHUEN PUBLIC SCHOOL	0001	26335194	INV	03/10/2026	Wrestling 2026	345671	470977			
	ACCOUNT DETAIL					LINE AMOUNT					
	1	1135710	55500	3510	WRESTLING	WRESTLING	350.00				
					CHECK TOTAL	350.00					
17707	MILESTONES, INC	0000	26341032	INV	03/10/2026	32212	345384	470679			
	ACCOUNT DETAIL					LINE AMOUNT					
	1	1141400	53901	9300	SPED	NON-PUBLIC	10,740.60				
							10,740.60				

PRELIMINARY CITY OF MELROSE WARRANT REPORT

Detail Invoice List

WARRANT: S26062 03/10/2026

CASH ACCOUNT: 00 104200		EASTERN VENDOR 1132								
VENDOR		REMIT	PO	TYPE	DUE DATE	INVOICE	AMOUNT	DOCUMENT	VOUCHER	CHECK
17707	MILESTONES, INC	0000	26341112	INV	03/10/2026	32213		345385	470680	
	ACCOUNT DETAIL					LINE AMOUNT				
	1 1141400 53901 9300	SPED	NON-PUBLIC			10,740.60				
							10,740.60			
						CHECK TOTAL	21,481.20			
16553	NASHOBA LEARNING GROU	0000	26341037	INV	03/10/2026	032386		345639	470941	
	ACCOUNT DETAIL					LINE AMOUNT				
	1 1141400 53901 9300	SPED	NON-PUBLIC			9,927.00				
							9,927.00			
16553	NASHOBA LEARNING GROU	0000		CRM	01/01/2026	032215		345640	470942	
	ACCOUNT DETAIL					LINE AMOUNT				
	1 1141400 53901 9300	SPED	NON-PUBLIC			-1,323.60				
							-1,323.60			
16553	NASHOBA LEARNING GROU	0000	26341038	INV	03/10/2026	032387		345641	470943	
	ACCOUNT DETAIL					LINE AMOUNT				
	1 1141400 53901 9300	SPED	NON-PUBLIC			9,927.00				
							9,927.00			
16553	NASHOBA LEARNING GROU	0000		CRM	03/10/2026	032216		345643	470945	
	ACCOUNT DETAIL					LINE AMOUNT				
	1 1141400 53901 9300	SPED	NON-PUBLIC			-1,323.60				
							-1,323.60			
						CHECK TOTAL	17,206.80			
609610	NEW ENGLAND ACADEMY,	0000	26341061	INV	03/10/2026	MEL0226H		345386	470682	
	ACCOUNT DETAIL					LINE AMOUNT				
	1 1141400 53901 9300	SPED	NON-PUBLIC			6,562.20				
							6,562.20			
609610	NEW ENGLAND ACADEMY,	0000	26341062	INV	03/10/2026	MEL0226B		345388	470684	
	ACCOUNT DETAIL					LINE AMOUNT				
	1 1141400 53901 9300	SPED	NON-PUBLIC			6,562.20				
							6,562.20			
						CHECK TOTAL	13,124.40			
611603	THE NEW ENGLAND CENTE	0001	26341093	INV	03/10/2026	PSINV132380		345262	470554	
	ACCOUNT DETAIL					LINE AMOUNT				
	1 1141400 52400 2320	SPED	OTH COST			719.10				
							719.10			

PRELIMINARY CITY OF MELROSE WARRANT REPORT

Detail Invoice List

WARRANT: S26062 03/10/2026

CASH ACCOUNT: 00		104200		EASTERN VENDOR 1132							
VENDOR		REMIT	PO	TYPE	DUE DATE	INVOICE	AMOUNT	DOCUMENT	VOUCHER	CHECK	
						CHECK TOTAL	719.10				
633500	NORTH SUBURBAN TRANSP	0000	26399014	INV	03/10/2026	1320		345300	470593		
	ACCOUNT DETAIL					LINE AMOUNT					
	1 1135700 53450 3510	ATHL	AT TRANS			620.00					
							620.00				
633500	NORTH SUBURBAN TRANSP	0000	26335164	INV	03/10/2026	1321		345479	470779		
	ACCOUNT DETAIL					LINE AMOUNT					
	1 1135700 53450 3510	ATHL	AT TRANS			16,120.00					
							16,120.00				
633500	NORTH SUBURBAN TRANSP	0000	26399014	INV	03/10/2026	1323		345647	470949		
	ACCOUNT DETAIL					LINE AMOUNT					
	1 1135700 53450 3510	ATHL	AT TRANS			620.00					
							620.00				
						CHECK TOTAL	17,360.00				
631900	NORTHSHORE EDUCATION	0000	25341230	INV	03/10/2026	2026005866		345389	470685		
	ACCOUNT DETAIL					LINE AMOUNT					
	1 1141400 53900 9400	SPED	COLL TUIT			5,745.15					
							5,745.15				
631900	NORTHSHORE EDUCATION	0000	25341231	INV	03/10/2026	2026005869		345391	470687		
	ACCOUNT DETAIL					LINE AMOUNT					
	1 1141400 53900 9400	SPED	COLL TUIT			5,745.15					
							5,745.15				
631900	NORTHSHORE EDUCATION	0000	25341232	INV	03/10/2026	2026005867		345392	470688		
	ACCOUNT DETAIL					LINE AMOUNT					
	1 1141400 53900 9400	SPED	COLL TUIT			10,965.60					
							10,965.60				
631900	NORTHSHORE EDUCATION	0000	26341080	INV	03/10/2026	2026005868		345393	470689		
	ACCOUNT DETAIL					LINE AMOUNT					
	1 1141400 53900 9400	SPED	COLL TUIT			5,745.15					
							5,745.15				
						CHECK TOTAL	28,201.05				
679200	PERKINS SCHOOL FOR TH	0000	26341026	INV	03/10/2026	CI00008340		345650	470953		
	ACCOUNT DETAIL					LINE AMOUNT					
	1 1141400 53901 9300	SPED	NON-PUBLIC			9,700.20					
							9,700.20				

PRELIMINARY CITY OF MELROSE WARRANT REPORT

Detail Invoice List

WARRANT: S26062 03/10/2026

CASH ACCOUNT: 00		104200		EASTERN VENDOR 1132							
VENDOR		REMIT	PO	TYPE	DUE DATE	INVOICE	AMOUNT	DOCUMENT	VOUCHER	CHECK	
						CHECK TOTAL	9,700.20				
22448	PERSPECTIVES CHILDREN	0000	26341094	INV	03/10/2026	252618		345264	470556		
	ACCOUNT DETAIL					LINE AMOUNT					
	1 1141400 52400 2320	SPED		OTH COST			1,350.00				
							1,350.00				
22448	PERSPECTIVES CHILDREN	0000	26341094	INV	03/10/2026	252620		345652	470954		
	ACCOUNT DETAIL					LINE AMOUNT					
	1 1141400 52400 2320	SPED		OTH COST			910.00				
							910.00				
22448	PERSPECTIVES CHILDREN	0000	26341094	INV	03/10/2026	252619		345653	470955		
	ACCOUNT DETAIL					LINE AMOUNT					
	1 1141400 52400 2320	SPED		OTH COST			900.00				
							900.00				
						CHECK TOTAL	3,160.00				
21204	POCKETALK INC	0001	26396121	INV	03/10/2026	INV-INC-0005609		345121	470407		
	ACCOUNT DETAIL					LINE AMOUNT					
	1 1196000 55502 2410	CUR&PDEV		CR INS MAT			2,000.00				
							2,000.00				
						CHECK TOTAL	2,000.00				
21576	PRECISION HUMAN RESOU	0001	26341003	INV	03/10/2026	2100038511		345265	470557		
	ACCOUNT DETAIL					LINE AMOUNT					
	1 1141400 52400 2320	SPED		OTH COST			1,722.59				
							1,722.59				
21576	PRECISION HUMAN RESOU	0001	26341003	INV	03/10/2026	2100038619		345266	470558		
	ACCOUNT DETAIL					LINE AMOUNT					
	1 1141400 52400 2320	SPED		OTH COST			3,352.52				
							3,352.52				
						CHECK TOTAL	5,075.11				
20091	JANICE RAYMOND	0000	26396067	INV	03/10/2026	000030		345267	470559		
	ACCOUNT DETAIL					LINE AMOUNT					
	1 1196000 57613 2210	CUR&PDEV		CR DUES			1,200.00				
							1,200.00				
						CHECK TOTAL	1,200.00				

PRELIMINARY CITY OF MELROSE WARRANT REPORT

Detail Invoice List

WARRANT: S26062 03/10/2026

CASH ACCOUNT: 00		104200		EASTERN VENDOR 1132							
VENDOR		REMIT	PO	TYPE	DUE DATE	INVOICE	AMOUNT	DOCUMENT	VOUCHER	CHECK	
8977	RICOH USA INC	0001	26301007	INV	03/10/2026	109870137		345708	471015		
	ACCOUNT DETAIL					LINE AMOUNT					
	1 1199000 55500 2420		SYS-WIDE	SYS EQUIP		232.06					
							232.06				
						CHECK TOTAL	232.06				
724812	RIVERVIEW SCHOOL	0000	26341063	INV	03/10/2026	2026030200166		345590	470892		
	ACCOUNT DETAIL					LINE AMOUNT					
	1 1141400 53901 9300		SPED	NON-PUBLIC		7,314.60					
							7,314.60				
						CHECK TOTAL	7,314.60				
757861	SCHOOL SPECIALTY, LLC	0003	26396104	INV	03/10/2026	208136795114		345644	470946		
	ACCOUNT DETAIL					LINE AMOUNT					
	1 1196000 55502 2410		CUR&PDEV	CR INS MAT		6.48					
							6.48				
757861	SCHOOL SPECIALTY, LLC	0003	26396104	INV	03/10/2026	208136795116		345645	470947		
	ACCOUNT DETAIL					LINE AMOUNT					
	1 1196000 55502 2410		CUR&PDEV	CR INS MAT		51.84					
							51.84				
757861	SCHOOL SPECIALTY, LLC	0003	26396104	INV	03/10/2026	208136795112		345646	470948		
	ACCOUNT DETAIL					LINE AMOUNT					
	1 1196000 55502 2410		CUR&PDEV	CR INS MAT		16.20					
							16.20				
						CHECK TOTAL	74.52				
757850	SCHOOLS FOR CHILDREN,	0000	26341027	INV	03/10/2026	0000155806		345394	470691		
	ACCOUNT DETAIL					LINE AMOUNT					
	1 1141400 53901 9300		SPED	NON-PUBLIC		4,827.67					
							4,827.67				
757850	SCHOOLS FOR CHILDREN,	0000	26341064	INV	03/10/2026	0000155837		345396	470693		
	ACCOUNT DETAIL					LINE AMOUNT					
	1 1141400 53901 9300		SPED	NON-PUBLIC		8,564.85					
							8,564.85				
						CHECK TOTAL	13,392.52				

PRELIMINARY CITY OF MELROSE WARRANT REPORT

Detail Invoice List

WARRANT: S26062 03/10/2026

CASH ACCOUNT: 00		104200		EASTERN VENDOR 1132							
VENDOR		REMIT	PO	TYPE	DUE DATE	INVOICE	AMOUNT	DOCUMENT	VOUCHER	CHECK	
759950	SCOREBOARD ENTERPRISE	0001	26335129	INV	03/10/2026	41292		345268	470560		
	ACCOUNT DETAIL					LINE AMOUNT					
	1 1135700 55500 3510		ATHL	ATH GEN EX		8,415.00					
							8,415.00				
						CHECK TOTAL	8,415.00				
763600	SEEM COLLABORATIVE	0001	26341069	INV	03/10/2026	98371		345580	470882		
	ACCOUNT DETAIL					LINE AMOUNT					
	1 1141400 53900 9400		SPED	COLL TUIT		4,277.00					
							4,277.00				
763600	SEEM COLLABORATIVE	0001	26341068	INV	03/10/2026	98370		345581	470883		
	ACCOUNT DETAIL					LINE AMOUNT					
	1 1475264 52400 9400		CONT SVC	CONTR SVCS		4,277.00					
							4,277.00				
763600	SEEM COLLABORATIVE	0001	26341067	INV	03/10/2026	98369		345582	470884		
	ACCOUNT DETAIL					LINE AMOUNT					
	1 1141400 53900 9400		SPED	COLL TUIT		4,277.00					
							4,277.00				
763600	SEEM COLLABORATIVE	0001	25341237	INV	03/10/2026	98367		345583	470885		
	ACCOUNT DETAIL					LINE AMOUNT					
	1 1141400 53900 9400		SPED	COLL TUIT		2,138.50					
							2,138.50				
763600	SEEM COLLABORATIVE	0001	25341238	INV	03/10/2026	98368		345584	470886		
	ACCOUNT DETAIL					LINE AMOUNT					
	1 1141400 53900 9400		SPED	COLL TUIT		4,277.00					
							4,277.00				
763600	SEEM COLLABORATIVE	0001	26341081	INV	03/10/2026	98366		345585	470887		
	ACCOUNT DETAIL					LINE AMOUNT					
	1 1475264 52400 9400		CONT SVC	CONTR SVCS		4,277.00					
							4,277.00				
763600	SEEM COLLABORATIVE	0001	25341236	INV	03/10/2026	98365		345586	470888		
	ACCOUNT DETAIL					LINE AMOUNT					
	1 1141400 53900 9400		SPED	COLL TUIT		4,277.00					
							4,277.00				
763600	SEEM COLLABORATIVE	0001	26341066	INV	03/10/2026	98364		345587	470889		
	ACCOUNT DETAIL					LINE AMOUNT					
	1 1475264 52400 9400		CONT SVC	CONTR SVCS		4,277.00					
							4,277.00				

PRELIMINARY CITY OF MELROSE WARRANT REPORT

Detail Invoice List

WARRANT: S26062 03/10/2026

CASH ACCOUNT: 00		104200		EASTERN VENDOR 1132							
VENDOR		REMIT	PO	TYPE	DUE DATE	INVOICE	AMOUNT	DOCUMENT	VOUCHER	CHECK	
763600	SEEM COLLABORATIVE	0001	26341070	INV	03/10/2026	98363		345588	470890		
	ACCOUNT DETAIL					LINE AMOUNT					
	1 1141400 53900 9400	SPED	COLL TUIT			4,277.00					
							4,277.00				
763600	SEEM COLLABORATIVE	0001	26341065	INV	03/10/2026	98362		345589	470891		
	ACCOUNT DETAIL					LINE AMOUNT					
	1 1141400 53900 9400	SPED	COLL TUIT			4,277.00					
							4,277.00				
763600	SEEM COLLABORATIVE	0001	26341101	INV	03/10/2026	S19893		345596	470898		
	ACCOUNT DETAIL					LINE AMOUNT					
	1 1141400 52400 2320	SPED	OTH COST			462.00					
							462.00				
763600	SEEM COLLABORATIVE	0001	26341150	INV	03/10/2026	S19895		345600	470902		
	ACCOUNT DETAIL					LINE AMOUNT					
	1 1475264 52400 2320	CONT SVC	CONTR SVCS			522.00					
							522.00				
763600	SEEM COLLABORATIVE	0001	26341101	INV	03/10/2026	S19916		345601	470903		
	ACCOUNT DETAIL					LINE AMOUNT					
	1 1141400 52400 2320	SPED	OTH COST			770.00					
							770.00				
763600	SEEM COLLABORATIVE	0001	26341150	INV	03/10/2026	S19927		345603	470905		
	ACCOUNT DETAIL					LINE AMOUNT					
	1 1475264 52400 2320	CONT SVC	CONTR SVCS			696.00					
							696.00				
763600	SEEM COLLABORATIVE	0001	26341150	INV	03/10/2026	S19930		345605	470907		
	ACCOUNT DETAIL					LINE AMOUNT					
	1 1475264 52400 2320	CONT SVC	CONTR SVCS			928.00					
							928.00				
763600	SEEM COLLABORATIVE	0001	26341150	INV	03/10/2026	S19935		345608	470910		
	ACCOUNT DETAIL					LINE AMOUNT					
	1 1475264 52400 2320	CONT SVC	CONTR SVCS			812.00					
							812.00				
763600	SEEM COLLABORATIVE	0001	26341101	INV	03/10/2026	S19954		345609	470911		
	ACCOUNT DETAIL					LINE AMOUNT					
	1 1141400 52400 2320	SPED	OTH COST			192.50					
							192.50				

PRELIMINARY CITY OF MELROSE WARRANT REPORT

Detail Invoice List

WARRANT: S26062 03/10/2026

CASH ACCOUNT: 00 104200		EASTERN VENDOR 1132								
VENDOR		REMIT	PO	TYPE	DUE DATE	INVOICE	AMOUNT	DOCUMENT	VOUCHER	CHECK
763600	SEEM COLLABORATIVE	0001	26341150	INV	03/10/2026	S19971		345610	470912	
	ACCOUNT DETAIL					LINE AMOUNT				
	1 1475264 52400 2320		CONT SVC	CONTR SVCS		1,508.00				
							1,508.00			
763600	SEEM COLLABORATIVE	0001	26341101	INV	03/10/2026	S19976		345611	470913	
	ACCOUNT DETAIL					LINE AMOUNT				
	1 1141400 52400 2320		SPED	OTH COST		385.00				
							385.00			
763600	SEEM COLLABORATIVE	0001	26341101	INV	03/10/2026	S19979		345613	470915	
	ACCOUNT DETAIL					LINE AMOUNT				
	1 1141400 52400 2320		SPED	OTH COST		1,232.00				
							1,232.00			
763600	SEEM COLLABORATIVE	0001	26341101	INV	03/10/2026	S19986		345614	470916	
	ACCOUNT DETAIL					LINE AMOUNT				
	1 1141400 52400 2320		SPED	OTH COST		462.00				
							462.00			
763600	SEEM COLLABORATIVE	0001	26341101	INV	03/10/2026	S19997		345616	470918	
	ACCOUNT DETAIL					LINE AMOUNT				
	1 1141400 52400 2320		SPED	OTH COST		539.00				
							539.00			
763600	SEEM COLLABORATIVE	0001	26341147	INV	03/10/2026	S19952-A		345654	470956	
	ACCOUNT DETAIL					LINE AMOUNT				
	1 1475264 52400 2356		CONT SVC	CONTR SVCS		308.00				
							308.00			
763600	SEEM COLLABORATIVE	0001	26341101	INV	03/10/2026	S19952		345655	470958	
	ACCOUNT DETAIL					LINE AMOUNT				
	1 1141400 52400 2320		SPED	OTH COST		4,300.00				
							4,300.00			
							CHECK TOTAL	53,748.00		
772500	SHORE EDUCATIONAL COL	0000	25341224	INV	03/10/2026	2602223		345397	470694	
	ACCOUNT DETAIL					LINE AMOUNT				
	1 1141400 53900 9400		SPED	COLL TUIT		6,976.35				
							6,976.35			
							CHECK TOTAL	6,976.35		

PRELIMINARY CITY OF MELROSE WARRANT REPORT

Detail Invoice List

WARRANT: S26062 03/10/2026

CASH ACCOUNT: 00 104200		EASTERN VENDOR 1132									
VENDOR		REMIT	PO	TYPE	DUE DATE	INVOICE	AMOUNT	DOCUMENT	VOUCHER	CHECK	
806070	STONEHAM PUBLIC SCHOO	0003	26341100	INV	03/10/2026	2317		345617	470919		
	ACCOUNT DETAIL					LINE AMOUNT					
	1 1475264 52400 9400		CONT SVC	CONTR SVCS		13,500.00					
							13,500.00				
						CHECK TOTAL	13,500.00				
10994	TALEWISE	0000	26307080	INV	03/10/2026	21984		345119	470405		
	ACCOUNT DETAIL					LINE AMOUNT					
	1 18512 52400 6300		ED STAT	CONTR SVCS		550.00					
							550.00				
						CHECK TOTAL	550.00				
19359	TTF SOLUTIONS, LLC	0001	26341023	INV	03/10/2026	21384913		345269	470561		
	ACCOUNT DETAIL					LINE AMOUNT					
	1 1141400 52400 2320		SPED	OTH COST		959.85					
							959.85				
						CHECK TOTAL	2,227.50				
19359	TTF SOLUTIONS, LLC	0001	26341023	INV	03/10/2026	21378656		345271	470563		
	ACCOUNT DETAIL					LINE AMOUNT					
	1 1141400 52400 2320		SPED	OTH COST		1,267.65					
							1,267.65				
						CHECK TOTAL	2,227.50				
553617	VALLEY COLLABORATIVE	0000	25341233	INV	03/10/2026	2606101		345273	470566		
	ACCOUNT DETAIL					LINE AMOUNT					
	1 1141400 53900 9400		SPED	COLL TUIT		5,184.00					
							5,184.00				
						CHECK TOTAL	5,184.00				
8995	VERIZON NEW ENGLAND I	0000	26301025	INV	03/10/2026	02182026		345364	470658		
	ACCOUNT DETAIL					LINE AMOUNT					
	1 1199000 53614 4130		SYS-WIDE	PHONE SW		302.01					
							302.01				
						CHECK TOTAL	302.01				
868855	VERIZON WIRELESS SERV	0000	26301038	INV	03/10/2026	6134981167		345291	470584		
	ACCOUNT DETAIL					LINE AMOUNT					
	1 1199000 53614 4130		SYS-WIDE	PHONE SW		461.58					
							461.58				
						CHECK TOTAL	461.58				

PRELIMINARY CITY OF MELROSE WARRANT REPORT

Detail Invoice List

WARRANT: S26062 03/10/2026

CASH ACCOUNT: 00		104200		EASTERN VENDOR 1132							
VENDOR	REMIT	PO	TYPE	DUE DATE	INVOICE	AMOUNT	DOCUMENT	VOUCHER	CHECK		
						CHECK TOTAL				461.58	
11695	JOE WARREN & SONS CO	0000	26301126	INV	03/10/2026	763472	345465	470765			
						ACCOUNT DETAIL				LINE AMOUNT	
1	12002	520000		SCHLUN EXPPURCH SVCS		83.95					
							83.95				
11695	JOE WARREN & SONS CO	0000	26301131	INV	03/10/2026	763470	345468	470768			
						ACCOUNT DETAIL				LINE AMOUNT	
1	12002	520000		SCHLUN EXPPURCH SVCS		83.95					
							83.95				
11695	JOE WARREN & SONS CO	0000	26301130	INV	03/10/2026	764048	345469	470769			
						ACCOUNT DETAIL				LINE AMOUNT	
1	12002	520000		SCHLUN EXPPURCH SVCS		83.95					
							83.95				
11695	JOE WARREN & SONS CO	0000	26301129	INV	03/10/2026	763468	345470	470771			
						ACCOUNT DETAIL				LINE AMOUNT	
1	12002	520000		SCHLUN EXPPURCH SVCS		615.65					
							615.65				
11695	JOE WARREN & SONS CO	0000	26301127	INV	03/10/2026	764490Q	345472	470772			
						ACCOUNT DETAIL				LINE AMOUNT	
1	12002	520000		SCHLUN EXPPURCH SVCS		2,139.73					
							2,139.73				
11695	JOE WARREN & SONS CO	0000	26301128	INV	03/10/2026	763471	345473	470773			
						ACCOUNT DETAIL				LINE AMOUNT	
1	12002	520000		SCHLUN EXPPURCH SVCS		1,882.26					
							1,882.26				
11695	JOE WARREN & SONS CO	0000	26301103	INV	03/10/2026	764466Q	345476	470777			
						ACCOUNT DETAIL				LINE AMOUNT	
1	12002	520000		SCHLUN EXPPURCH SVCS		1,471.06					
							1,471.06				
						CHECK TOTAL				6,360.55	
484680	WB MASON CO INC	0000	26331093	INV	03/10/2026	260144662	345120	470406			
						ACCOUNT DETAIL				LINE AMOUNT	
1	1131000	55500	2415	H.S.	HS INS SUP	1,794.00					
							1,794.00				

PRELIMINARY CITY OF MELROSE WARRANT REPORT

Detail Invoice List

WARRANT: S26062 03/10/2026

CASH ACCOUNT: 00		104200		EASTERN VENDOR 1132						
VENDOR		REMIT	PO	TYPE	DUE DATE	INVOICE	AMOUNT	DOCUMENT	VOUCHER	CHECK
484680	WB MASON CO INC	0000	26316046	INV	03/10/2026	260333971		345522	470822	
ACCOUNT DETAIL						LINE AMOUNT				
1	1116350 55500 2415		ROOSVLT	RV INS SUP			1,794.00			
						CHECK TOTAL	1,794.00			
21013	WINDHAM WOODS SCHOOL,	0000	26341071	INV	03/10/2026	1631		345399	470696	
ACCOUNT DETAIL						LINE AMOUNT				
1	1141400 53901 9300		SPED	NON-PUBLIC			5,200.00			
						CHECK TOTAL	5,200.00			
21013	WINDHAM WOODS SCHOOL,	0000	26341072	INV	03/10/2026	1644		345400	470697	
ACCOUNT DETAIL						LINE AMOUNT				
1	1141400 53901 9300		SPED	NON-PUBLIC			4,200.00			
						CHECK TOTAL	4,200.00			
142 INVOICES						WARRANT TOTAL	527,879.32	527,879.32		

PRELIMINARY CITY OF MELROSE WARRANT REPORT

Preliminary Warrant Summary

WARRANT: S26062 03/10/2026

FUND	ORG	ACCOUNT	AMOUNT	AVLB BUDGET
0111	1112102	HOOVER ART	0111-3-000-000-12-102-00-30-55500 -2415	HV ART INSTRUCTIONAL 27.96 10,942.29
0111	1112350	HOOVER ALL ELEMENTARY	0111-3-000-000-12-350-00-30-55500 -2430	HV GENERAL SUPPLIES 181.13 10,942.29
0111	1114126	LINCOLN-PHYS ED	0111-3-000-000-14-126-00-30-55502 -2410	LN WELLNESS INSTR MAT 115.23 16,906.85
0111	1116350	ROOSEVELT ALL ELEMENT	0111-3-000-000-16-350-00-30-55500 -2415	RV INSTR SUPPLIES 1,794.00 4,597.37
0111	1117350	WINTHROP ALL ELEMENTA	0111-3-000-000-17-350-00-30-55500 -2430	WN GENERAL SUPPLIES 305.76 7,354.67
0111	1131000	HIGH SCHOOL	0111-3-000-000-31-000-00-50-55500 -2415	HS INSTRUCTIONAL SUPP 1,794.00 75,325.09
0111	1131000	HIGH SCHOOL	0111-3-000-000-31-000-00-50-55500 -2430	HS GENERAL SUPPLIES 40.11 75,325.09
0111	1131128	HIGH SCHOOL SCIENCE	0111-3-000-000-31-128-00-50-55500 -2415	HS SCIENCE INSTR SUPP 179.77 75,325.09
0111	1135700	ATHLETICS	0111-3-000-000-35-700-00-50-53450 -3510	AT TRANSPORT 18,586.69 99,999.73
0111	1135700	ATHLETICS	0111-3-000-000-35-700-00-50-55500 -3510	AT GENERAL EXPENSES 8,415.00 99,999.73
0111	1135710	ATHLETICS WRESTLING	0111-3-000-000-35-710-00-50-55500 -3510	AT WRESTLING 350.00 99,999.73
0111	1141400	SPED	0111-3-000-000-41-400-00-00-52400 -2320	SP RELATED COSTS 24,448.21 1,093,788.78
0111	1141400	SPED	0111-3-000-000-41-400-00-00-53450 -3300	SP TRANSPORTATION MPS 41,219.69 1,093,788.78
0111	1141400	SPED	0111-3-000-000-41-400-00-00-53900 -9400	SP TUITION COLLABORAT 68,161.90 1,093,788.78
0111	1141400	SPED	0111-3-000-000-41-400-00-00-53901 -9300	SP TUITION NON-PUBLIC 193,892.54 1,093,788.78
0111	1196000	CURRICULUM & PROF DEV	0111-3-000-000-96-000-00-00-52400 -2110	CR TRANSLATION SERVIC 319.50 6,426.00
0111	1196000	CURRICULUM & PROF DEV	0111-3-000-000-96-000-00-00-55502 -2410	CR INSTR MATERIALS 2,287.31 63,740.93
0111	1196000	CURRICULUM & PROF DEV	0111-3-000-000-96-000-00-00-57613 -2210	CR MEMBERSHIPS AND DU 1,200.00 63,740.93
0111	1197000	ADMIN	0111-3-000-000-97-000-00-00-54610 -1210	AD CENTRAL OFFICE SUP 50.98 5,965.06
0111	1199000	SYSTEM-WIDE	0111-3-000-000-99-000-00-00-52400 -1410	SW CONSULTANTS 5,000.00 61,730.32
0111	1199000	SYSTEM-WIDE	0111-3-000-000-99-000-00-00-53401 -1430	SW LEGAL SERVICES 395.00 61,730.32
0111	1199000	SYSTEM-WIDE	0111-3-000-000-99-000-00-00-53614 -4130	SW TELEPHONE 776.18 61,730.32
0111	1199000	SYSTEM-WIDE	0111-3-000-000-99-000-00-00-55500 -2420	SW MAINTENANCE OF EQU 232.06 61,730.32
			FUND TOTAL	369,773.02
1200	12002	SCHOOL LUNCH - EXP	1200-3-300-300-00-000-00-02-520000-	PURCHASED SERVICES 6,360.55 61,730.32
			FUND TOTAL	6,360.55
1350	135025	COPS/SVPP	1350-3-025-300-00-000-21-04-55503 -2430	COPS-CITY APPROPRIATI 40.00 15,465.30
			FUND TOTAL	40.00
1475	1475254	CONTRACT SERVICES	1475-3-025-005-41-000-20-05-52400 -2320	CONTRACT SERVICES ASS 956.65 0.00
1475	1475264	CONTRACT SERVICES	1475-3-026-005-41-000-20-05-52400 -2320	CONTRACT SERVICES ASS 19,941.50 17,964.13
1475	1475264	CONTRACT SERVICES	1475-3-026-005-41-000-20-05-52400 -2356	CONTRACT SERVICES-PDE 608.00 2,686.74
1475	1475264	CONTRACT SERVICES	1475-3-026-005-41-000-20-05-52400 -2720	CONTRACT SERVICES ASS 3,178.35 8,071.40
1475	1475264	CONTRACT SERVICES	1475-3-026-005-41-000-20-05-52400 -9300	CONTRACT SERVICES NON 2,191.52 -73,744.52
1475	1475264	CONTRACT SERVICES	1475-3-026-005-41-000-20-05-52400 -9400	CONTRACT SERVICES COL 32,626.90 144,272.80

Report generated: 03/04/2026 13:54:11
 User: Kim Candilieri (kcandilieri)
 Program ID: apwarrnt

CITY OF MELROSE v2024.7 LIVE



PRELIMINARY CITY OF MELROSE WARRANT REPORT

1475	1475265	SUPPLIES&MATERIALS	1475-3-026-006-41-000-20-05-55500 -2410	SUPPLIES&MATERIALS -I	3,878.54	10,778.76
				FUND TOTAL	63,381.46	
1477	1477255	FY25 TITLE I SUPPLIES	1477-3-025-300-96-000-20-05-55500 -2410	FY25 TITLE I SUPPLIES	100.30	683.70
				FUND TOTAL	100.30	
1577	1577264	FY26 METCO CONTRACT S	1577-3-026-005-90-000-22-05-52400 -3300	FY26 METCO TRANSPORTA	84,240.00	68,381.00
1577	1577265	FY26 METCO SUPPLIES &	1577-3-026-006-90-000-22-05-55500 -2430	FY26 METCO SUPPLIES &	160.95	1,476.08
				FUND TOTAL	84,400.95	
1851	18512	ED STATIONS - EXPENSE	1851-3-300-300-00-00 -29-02-52400 -6300	CONTRACT SERVICES	2,050.00	2,962,303.85
1851	18512	ED STATIONS - EXPENSE	1851-3-300-300-00-00 -29-02-55500 -6300	GENERAL SUPPLY	1,773.04	2,962,303.85
				FUND TOTAL	3,823.04	
WARRANT SUMMARY TOTAL					527,879.32	
GRAND TOTAL					527,879.32	

PRELIMINARY CITY OF MELROSE WARRANT REPORT

Warrant List by Voucher

WARRANT: S26062 03/10/2026

VOUCHER	VENDOR	DOCUMENT	INVOICE	PO	TYPE	DUE DATE	AMOUNT	COMMENT
470398	134305 THE CARNIVAL PARTY LLC	345113	2026668	26307079	INV	03/10/2026	750.00	FY26 ED STA FEB VACA
470399	134305 THE CARNIVAL PARTY LLC	345114	202653	26307081	INV	03/10/2026	750.00	FY26 ED STA FEB VACA
470401	456000 LUCEY'S SERVICE STATION I	345116	61475	265320	INV	03/10/2026	79.69	MELROSE SCHOOLS ROAD
470402	631300 NRT BUS INC	345117	INV180073	26390001	INV	03/10/2026	42,120.00	MELROSE METCO 3 BIG B
470403	631300 NRT BUS INC	345118	INV200340	26390001	INV	03/10/2026	42,120.00	MELROSE METCO 3 BIG B
470405	10994 TALEWISE	345119	21984	26307080	INV	03/10/2026	550.00	FY26 ED STA FEB VACA
470406	484680 WB MASON CO INC	345120	260144662	26331093	INV	03/10/2026	1,794.00	MHS COPIER PAPER / IN
470407	21204 POCKETALK INC	345121	INV-INC-0005609	26396121	INV	03/10/2026	2,000.00	MELROSE 26-27 ANNUAL
470542	263010 4IMPRINT INC	345250	14756818	26307074	INV	03/10/2026	297.51	FY26 ED STA REPLACEME
470543	23720 CONSTELLATIONS BEHAVIORAL	345251	13135765	26341022	INV	03/10/2026	15,475.50	MELROSE PPS SB TECH S
470544	186250 COTTING SCHOOL INC	345252	INV3773	26341107	INV	03/10/2026	2,085.00	MELROSE PPS JAN 2026
470545	186250 COTTING SCHOOL INC	345253	INV3774	26341107	INV	03/10/2026	2,050.00	MELROSE PPS JAN 2026
470546	23797 CYBER COMMUNICATIONS SALE	345254	100013211-1	26301123	INV	03/10/2026	40.00	FY26 MELROSE RADIO EN
470547	394530 JUSTICE RESOURCE INSTITUT	345255	12450726MEL	26341036	INV	03/10/2026	6,815.16	MELROSE PPS SCHOOL TU
470548	394530 JUSTICE RESOURCE INSTITUT	345256	12450726MELLC	26341035	INV	03/10/2026	6,815.16	MELROSE PPS SCHOOL TU
470549	424800 LANDMARK SCHOOL OUTREACH	345257	FY26-051946	26341092	INV	03/10/2026	300.00	MELROSE PPS PD JAN 20
470550	9048 LISA'S PIZZA MELROSE LLC	345258	458	26390011	INV	03/10/2026	160.95	MELROSE SCHOOLS LUNCH
470551	15447 MAXIM HEALTHCARE SERVICES	345259	V29435219	26341074	INV	03/10/2026	8,400.00	MELROSE PPS TRANSP JA
470553	542100 MELROSE SCHOOL FOOD SERVI	345260	2605	26396124	INV	03/10/2026	100.30	SNACKS - VACATION LEA
470554	611603 THE NEW ENGLAND CENTER FO	345262	PSINV132380	26341093	INV	03/10/2026	719.10	MELROSE ACE MONTHLY F
470556	22448 PERSPECTIVES CHILDREN'S T	345264	252618	26341094	INV	03/10/2026	1,350.00	MELROSE PPS FEB 2026
470557	21576 PRECISION HUMAN RESOURCE	345265	2100038511	26341003	INV	03/10/2026	1,722.59	MELROSE PPS TEACH ASS
470558	21576 PRECISION HUMAN RESOURCE	345266	2100038619	26341003	INV	03/10/2026	3,352.52	MELROSE PPS TEACH ASS
470559	20091 JANICE RAYMOND	345267	000030	26396067	INV	03/10/2026	1,200.00	FY26 MELROSE FEB 2026
470560	759950 SCOREBOARD ENTERPRISES IN	345268	41292	26335129	INV	03/10/2026	8,415.00	MELROSE ATHLETICS / I
470561	19359 TTF SOLUTIONS, LLC	345269	21384913	26341023	INV	03/10/2026	959.85	MELROSE PPS SCHOOL PA
470563	19359 TTF SOLUTIONS, LLC	345271	21378656	26341023	INV	03/10/2026	1,267.65	MELROSE PPS SCHOOL PA
470566	553617 VALLEY COLLABORATIVE	345273	2606101	25341233	INV	03/10/2026	5,184.00	MELROSE PPS SCHOOL TU
470581	169793 COMCAST	345288	02092026	26301024	INV	03/10/2026	12.59	FY26 HIGH SCHOOL CABL
470584	868855 VERIZON WIRELESS SERVICES	345291	6134981167	26301038	INV	03/10/2026	461.58	WIRELESS JAN 2 - FEB
470585	18325 AMAZON CAPITAL SERVICES	345292	1FWY-73CC-7169	26301121	INV	03/10/2026	50.98	ORANGE FILE FOLDERS /
470589	20661 KING BRIAN TRANSPORTATION	345296	776	265333	INV	03/10/2026	3,945.00	MELROSE STUDENT TRANS
470593	633500 NORTH SUBURBAN TRANSPORTA	345300	1320	26399014	INV	03/10/2026	620.00	MELROSE SCHOOL DRAMA
470656	18325 AMAZON CAPITAL SERVICES	345362	1PMJ-LVX9-CMHQ	26307067	INV	03/10/2026	395.22	FY26 ED STA LINCOLN S
470657	18325 AMAZON CAPITAL SERVICES	345363	1HXQ-PRF4-JXHJ	26307067	INV	03/10/2026	11.79	FY26 ED STA LINCOLN S
470658	8995 VERIZON NEW ENGLAND INC	345364	02182026	26301025	INV	03/10/2026	302.01	FY26 SCHOOL FIOS FEB
470659	84000 DICK BLICK	345365	7361831	26331090	INV	03/10/2026	36.34	MELROSE HS ART PAINT
470661	84000 DICK BLICK	345367	7423820	26331090	INV	03/10/2026	3.77	MELROSE HS ART PAINT
470662	18325 AMAZON CAPITAL SERVICES	345368	173J-Q6QV-NJMJ	26317042	INV	03/10/2026	18.36	WINTHROP NOTE PADS /
470663	18325 AMAZON CAPITAL SERVICES	345369	1TGG-X6P3-PKQF	26317043	INV	03/10/2026	287.40	WINTHROP CLOCKS FOR T

Report generated: 03/04/2026 13:54:11
 User: Kim Candilieri (kcandilieri)
 Program ID: apwarrnt

PRELIMINARY CITY OF MELROSE WARRANT REPORT

Warrant List by Voucher

WARRANT: S26062 03/10/2026

VOUCHER	VENDOR	DOCUMENT	INVOICE	PO	TYPE	DUE DATE	AMOUNT	COMMENT
470664	22678 JOHN MACERO	345370	12	26301125	INV	03/10/2026	5,000.00	SENIOR ADVISOR SERVIC
470665	172245 COMMUNITY THERAPEUTIC DAY	345371	SM February 2026	26341031	INV	03/10/2026	8,833.80	MELROSE PPS - TUITION
470666	286382 HOPEFUL JOURNEYS EDUCATIO	345372	022026CB	26341028	INV	03/10/2026	11,144.85	MELROSE PPS SCHOOL TU
470667	286382 HOPEFUL JOURNEYS EDUCATIO	345373	022026ML	26341029	INV	03/10/2026	11,144.85	MELROSE PPS SCHOOL TU
470668	286382 HOPEFUL JOURNEYS EDUCATIO	345374	022026NP	26341030	INV	03/10/2026	11,144.85	MELROSE PPS SCHOOL TU
470669	286382 HOPEFUL JOURNEYS EDUCATIO	345375	022026AM	26341043	INV	03/10/2026	11,144.85	MELROSE PPS SCHOOL TU
470670	435600 LEARNING PREP SCHOOL	345376	64165	26341039	INV	03/10/2026	6,851.18	MELROSE PPS SCHOOL TU
470671	446700 LIGHTHOUSE SCHOOL	345377	0226105	26341057	INV	03/10/2026	11,385.90	MELROSE PPS SCHOOL TU
470672	446700 LIGHTHOUSE SCHOOL	345378	0226106	26341058	INV	03/10/2026	11,385.90	MELROSE PPS SCHOOL TU
470673	446700 LIGHTHOUSE SCHOOL	345379	CM0126099		CRM	03/10/2026	-759.06	MELROSE PPS CREDIT -
470674	446700 LIGHTHOUSE SCHOOL	345380	CM0126100		CRM	03/10/2026	-759.06	MELROSE PPS CREDIT -
470675	10540 MANCHESTER ESSEX REGIONAL	345381	3925 2.26	26341044	INV	03/10/2026	6,295.90	MELROSE PPS SCHOOL TU
470676	300150 THE MARGARET GIFFORD SCHO	345382	027047	26341033	INV	03/10/2026	7,124.44	MELROSE PPS SCHOOL TU
470679	17707 MILESTONES, INC	345384	32212	26341032	INV	03/10/2026	10,740.60	MELROSE PPS SCHOOL TU
470680	17707 MILESTONES, INC	345385	32213	26341112	INV	03/10/2026	10,740.60	MELROSE PPS SCHOOL TU
470682	609610 NEW ENGLAND ACADEMY, LLC	345386	MEL0226H	26341061	INV	03/10/2026	6,562.20	MELROSE PPS SCHOOL TU
470684	609610 NEW ENGLAND ACADEMY, LLC	345388	MEL0226B	26341062	INV	03/10/2026	6,562.20	MELROSE PPS SCHOOL TU
470685	631900 NORTHSHORE EDUCATION CONS	345389	2026005866	25341230	INV	03/10/2026	5,745.15	MELROSE PPS TUITION F
470687	631900 NORTHSHORE EDUCATION CONS	345391	2026005869	25341231	INV	03/10/2026	5,745.15	MELROSE PPS SCHOOL TU
470688	631900 NORTHSHORE EDUCATION CONS	345392	2026005867	25341232	INV	03/10/2026	10,965.60	MELROSE PPS TUITION F
470689	631900 NORTHSHORE EDUCATION CONS	345393	2026005868	26341080	INV	03/10/2026	5,745.15	MELROSE PPS TUITION F
470691	757850 SCHOOLS FOR CHILDREN, INC	345394	0000155806	26341027	INV	03/10/2026	4,827.67	MELROSE PPS TUITION F
470693	757850 SCHOOLS FOR CHILDREN, INC	345396	0000155837	26341064	INV	03/10/2026	8,564.85	MELROSE PPS SCHOOL TU
470694	772500 SHORE EDUCATIONAL COLLABO	345397	2602223	25341224	INV	03/10/2026	6,976.35	MELROSE PPS TUITION F
470695	24329 COLLABORATIVE LEARNING PR	345398	2025SD-6	26341082	INV	03/10/2026	2,191.52	MELROSE PPS SCHOOL TU
470696	21013 WINDHAM WOODS SCHOOL, INC	345399	1631	26341071	INV	03/10/2026	5,200.00	MELROSE PPS SCHOOL TU
470697	21013 WINDHAM WOODS SCHOOL, INC	345400	1644	26341072	INV	03/10/2026	4,200.00	MELROSE PPS SCHOOL TU
470737	18325 AMAZON CAPITAL SERVICES	345437	1WL1-4WT3-C1NK	26312013	INV	03/10/2026	82.25	HOOVER OFFICE SUPPLIE
470738	18325 AMAZON CAPITAL SERVICES	345439	174V-PVWC-GR4X	26312013	INV	03/10/2026	18.89	HOOVER OFFICE SUPPLIE
470739	18325 AMAZON CAPITAL SERVICES	345440	1DWL-THNJ-44FP	26312019	INV	03/10/2026	79.99	HOOVER PRINTER CARTRI
470740	18325 AMAZON CAPITAL SERVICES	345441	1TF4-K6M4-J3CL	26314034	INV	03/10/2026	115.23	LINCOLN WELLNESS SUPP
470741	18325 AMAZON CAPITAL SERVICES	345442	1NGG-GX9V-Y1TR	26312020	INV	03/10/2026	27.96	HOOVER ART SUPPLY / 1
470746	24515 JOSEPHS TRANSPORTATION	345447	5331	26335191	INV	03/10/2026	620.00	MELROSE HS ATHLETICS
470765	11695 JOE WARREN & SONS CO INC	345465	763472	26301126	INV	03/10/2026	83.95	MELROSE MIDDLE SCHOOL
470768	11695 JOE WARREN & SONS CO INC	345468	763470	26301131	INV	03/10/2026	83.95	MELROSE MIDDLE SCHOOL
470769	11695 JOE WARREN & SONS CO INC	345469	764048	26301130	INV	03/10/2026	83.95	MELROSE MIDDLE SCHOOL
470771	11695 JOE WARREN & SONS CO INC	345470	763468	26301129	INV	03/10/2026	615.65	MELROSE MIDDLE SCHOOL
470772	11695 JOE WARREN & SONS CO INC	345472	764490Q	26301127	INV	03/10/2026	2,139.73	MELROSE MIDDLE LEFT C
470773	11695 JOE WARREN & SONS CO INC	345473	763471	26301128	INV	03/10/2026	1,882.26	MELROSE MIDDLE SCHOOL
470777	11695 JOE WARREN & SONS CO INC	345476	764466Q	26301103	INV	03/10/2026	1,471.06	MELROSE MIDDLE SCHOOL

Report generated: 03/04/2026 13:54:11
 User: Kim Candilieri (kcandilieri)
 Program ID: apwarrnt

PRELIMINARY CITY OF MELROSE WARRANT REPORT

Warrant List by Voucher

WARRANT: S26062 03/10/2026

VOUCHER	VENDOR	DOCUMENT	INVOICE	PO	TYPE	DUE DATE	AMOUNT	COMMENT
470779	633500 NORTH SUBURBAN TRANSPORT	345479	1321	26335164	INV	03/10/2026	16,120.00	MELROSE ATHLETICS WIN
470787	277600 FLINN SCIENTIFIC INC	345487	3245647	26331096	INV	03/10/2026	179.77	MELROSE HS BIOLOGY SU
470790	456000 LUCEY'S SERVICE STATION I	345490	61712	26301132	INV	03/10/2026	606.69	MELROSE ATHLETIC VEH
470822	484680 WB MASON CO INC	345522	260333971	26316046	INV	03/10/2026	1,794.00	FY26 ROOSEVELT COPIER
470875	18325 AMAZON CAPITAL SERVICES	345573	1QDV-GW7X-GHDC	26307061	INV	03/10/2026	477.47	FY26 ED STA WINTHROP
470876	18325 AMAZON CAPITAL SERVICES	345574	1NVR-DN9Y-VCGN	26307061	INV	03/10/2026	69.77	FY26 ED STA WINTHROP
470877	18325 AMAZON CAPITAL SERVICES	345575	1YVG-VGG3-6T3Y	26307068	INV	03/10/2026	329.35	FY26 ED STA ROOSEVELT
470878	18325 AMAZON CAPITAL SERVICES	345576	14NJ-RKDM-79LD	26307068	INV	03/10/2026	63.95	FY26 ED STA ROOSEVELT
470879	19700 AMERICAN ARBITRATION ASSO	345577	01-26-0000-8241-2-JM	26301133	INV	03/10/2026	395.00	MELROSE LEGAL SERV /
470880	23700 DOCUSIGN INC	345578	111100638495	26341154	INV	03/10/2026	3,878.54	MELROSE PPS SUPPLY &
470882	763600 SEEM COLLABORATIVE	345580	98371	26341069	INV	03/10/2026	4,277.00	MELROSE PPS SCHOOL TU
470883	763600 SEEM COLLABORATIVE	345581	98370	26341068	INV	03/10/2026	4,277.00	MELROSE PPS SCHOOL TU
470884	763600 SEEM COLLABORATIVE	345582	98369	26341067	INV	03/10/2026	4,277.00	MELROSE PPS SCHOOL TU
470885	763600 SEEM COLLABORATIVE	345583	98367	25341237	INV	03/10/2026	2,138.50	MELROSE PPS SCHOOL TU
470886	763600 SEEM COLLABORATIVE	345584	98368	25341238	INV	03/10/2026	4,277.00	MELROSE PPS SCHOOL TU
470887	763600 SEEM COLLABORATIVE	345585	98366	26341081	INV	03/10/2026	4,277.00	MELROSE PPS SCHOOL TU
470888	763600 SEEM COLLABORATIVE	345586	98365	25341236	INV	03/10/2026	4,277.00	MELROSE PPS SCHOOL TU
470889	763600 SEEM COLLABORATIVE	345587	98364	26341066	INV	03/10/2026	4,277.00	MELROSE PPS SCHOOL TU
470890	763600 SEEM COLLABORATIVE	345588	98363	26341070	INV	03/10/2026	4,277.00	MELROSE PPS SCHOOL TU
470891	763600 SEEM COLLABORATIVE	345589	98362	26341065	INV	03/10/2026	4,277.00	MELROSE PPS SCHOOL TU
470892	724812 RIVERVIEW SCHOOL	345590	2026030200166	26341063	INV	03/10/2026	7,314.60	MELROSE PPS TUITION F
470894	23446 LAURA IVES	345591	MEL2605	26341116	INV	03/10/2026	4,275.00	MELROSE PPS / SUB @ M
470898	763600 SEEM COLLABORATIVE	345596	S19893	26341101	INV	03/10/2026	462.00	MELROSE VISION-MOBILI
470902	763600 SEEM COLLABORATIVE	345600	S19895	26341150	INV	03/10/2026	522.00	MELROSE PPS TUTORING
470903	763600 SEEM COLLABORATIVE	345601	S19916	26341101	INV	03/10/2026	770.00	MELROSE PPS BCBA JAN
470905	763600 SEEM COLLABORATIVE	345603	S19927	26341150	INV	03/10/2026	696.00	MELROSE PPS TUTORING
470907	763600 SEEM COLLABORATIVE	345605	S19930	26341150	INV	03/10/2026	928.00	MELROSE PPS TUTORING
470910	763600 SEEM COLLABORATIVE	345608	S19935	26341150	INV	03/10/2026	812.00	MELROSE PPS TUTORING
470911	763600 SEEM COLLABORATIVE	345609	S19954	26341101	INV	03/10/2026	192.50	MELROSE PPS BCBA JAN
470912	763600 SEEM COLLABORATIVE	345610	S19971	26341150	INV	03/10/2026	1,508.00	MELROSE PPS TUTORING
470913	763600 SEEM COLLABORATIVE	345611	S19976	26341101	INV	03/10/2026	385.00	MELROSE PPS BCBA JAN
470915	763600 SEEM COLLABORATIVE	345613	S19979	26341101	INV	03/10/2026	1,232.00	MELROSE PPS VISION JA
470916	763600 SEEM COLLABORATIVE	345614	S19986	26341101	INV	03/10/2026	462.00	MELROSE PPS VISION JA
470918	763600 SEEM COLLABORATIVE	345616	S19997	26341101	INV	03/10/2026	539.00	MELROSE PPS BCBA JAN
470919	806070 STONEHAM PUBLIC SCHOOLS	345617	2317	26341100	INV	03/10/2026	13,500.00	MELROSE SCHOOL TUITIO
470941	16553 NASHOBA LEARNING GROUP, I	345639	032386	26341037	INV	03/10/2026	9,927.00	MELROSE PPS SCHOOL TU
470942	16553 NASHOBA LEARNING GROUP, I	345640	032215		CRM	01/01/2026	-1,323.60	MELROSE PPS SNOW DAYS
470943	16553 NASHOBA LEARNING GROUP, I	345641	032387	26341038	INV	03/10/2026	9,927.00	MELROSE PPS SCHOOL TU
470945	16553 NASHOBA LEARNING GROUP, I	345643	032216		CRM	03/10/2026	-1,323.60	MELROSE PPS SNOW DAYS
470946	757861 SCHOOL SPECIALTY, LLC	345644	208136795114	26396104	INV	03/10/2026	6.48	SCIENCE MATERIALS - E

Report generated: 03/04/2026 13:54:11
 User: Kim Candilieri (kcandilieri)
 Program ID: apwarrnt

PRELIMINARY CITY OF MELROSE WARRANT REPORT

Warrant List by Voucher

WARRANT: S26062 03/10/2026

VOUCHER	VENDOR	DOCUMENT	INVOICE	PO	TYPE	DUE DATE	AMOUNT	COMMENT
470947	757861 SCHOOL SPECIALTY, LLC	345645	208136795116	26396104	INV	03/10/2026	51.84	SCIENCE MATERIALS - E
470948	757861 SCHOOL SPECIALTY, LLC	345646	208136795112	26396104	INV	03/10/2026	16.20	SCIENCE MATERIALS - E
470949	633500 NORTH SUBURBAN TRANSPORT	345647	1323	26399014	INV	03/10/2026	620.00	MELROSE SCHOOLS DRAMA
470950	12942 INTERNATIONAL TRANSLATION	345648	INV-04690	26341086	INV	03/10/2026	649.00	MELROSE PPS PHONE TRA
470953	679200 PERKINS SCHOOL FOR THE BL	345650	CI00008340	26341026	INV	03/10/2026	9,700.20	MELROSE PPS SCHOOL TU
470954	22448 PERSPECTIVES CHILDREN'S T	345652	252620	26341094	INV	03/10/2026	910.00	MELROSE PPS SPEECH &
470955	22448 PERSPECTIVES CHILDREN'S T	345653	252619	26341094	INV	03/10/2026	900.00	MELROSE SPEECH & LANG
470956	763600 SEEM COLLABORATIVE	345654	S19952-A	26341147	INV	03/10/2026	308.00	MELROSE PPS SOCIAL WO
470958	763600 SEEM COLLABORATIVE	345655	S19952	26341101	INV	03/10/2026	4,300.00	MELROSE PPS COTA JAN
470960	15213 SJ TRANSPORTATION LLC	345657	FEBRUARY 2026-1	265316	INV	03/10/2026	8,450.00	MELROSE OUT OF DISTRI
470961	15213 SJ TRANSPORTATION LLC	345658	FEBRUARY 2026-2	265316	INV	03/10/2026	9,840.00	MELROSE SCHOOLS FEB 2
470962	15213 SJ TRANSPORTATION LLC	345659	FEBRUARY 2026-3	265316	INV	03/10/2026	5,500.00	MELROSE OUT OF DISTRI
470963	15213 SJ TRANSPORTATION LLC	345660	FEBRUARY 2026-4	265316	INV	03/10/2026	5,005.00	MELROSE OUT OF DISTRI
470964	18325 AMAZON CAPITAL SERVICES	345661	1FTT-FDF9-DW1Y	26307078	INV	03/10/2026	58.96	FY26 ED STA LINCOLN S
470965	18325 AMAZON CAPITAL SERVICES	345662	1LDQ-1LWW-XHJR	26307077	INV	03/10/2026	17.99	FY 26 ED STA ROOSEVEL
470967	18325 AMAZON CAPITAL SERVICES	345663	13VH-7J7G-CXJ1	26307083	INV	03/10/2026	51.03	FY26 ED STA ROOSEVELT
470970	18325 AMAZON CAPITAL SERVICES	345666	1XLY-74YL-7KPW	26396119	INV	03/10/2026	145.94	BOOKS FOR ELEMENTARY
470971	18325 AMAZON CAPITAL SERVICES	345667	14X6-9VVK-MWV4	26396119	INV	03/10/2026	48.87	BOOKS FOR ELEMENTARY
470972	18325 AMAZON CAPITAL SERVICES	345668	1NC1-MN1F-67JG	26396127	INV	03/10/2026	17.98	LIBRARY BOOKS FOR FRA
470977	555100 METHUEN PUBLIC SCHOOLS	345671	Wrestling 2026	26335194	INV	03/10/2026	350.00	MELROSE HIGH SCHOOL -
471014	12942 INTERNATIONAL TRANSLATION	345707	INV-04709	26396129	INV	03/10/2026	319.50	MELROSE TRANSLATION S
471015	8977 RICOH USA INC	345708	109870137	26301007	INV	03/10/2026	232.06	EQ RENTAL FEB 28 - MA
WARRANT TOTAL							527,879.32	

PRELIMINARY CITY OF MELROSE WARRANT REPORT

DATE: 03/10/2026
WARRANT: S26063
AMOUNT: 740.00

Kerriann Golden
CFO/City Auditor

To the Accounting Office:
The following named bills of the School Department amounting in the
agreed to total above are hereby approved and you are requested to
place them on a warrant payment.

Approved: _____

PRELIMINARY CITY OF MELROSE WARRANT REPORT

Detail Invoice List

WARRANT: S26063 03/10/2026

CASH ACCOUNT: 00		104200		EASTERN VENDOR 1132							
VENDOR		REMIT	PO	TYPE	DUE DATE	INVOICE	AMOUNT	DOCUMENT	VOUCHER	CHECK	
20327	SEBASTIANO AMARA	0000		INV	03/10/2026	2026-485		345699	471005		
	ACCOUNT DETAIL					LINE AMOUNT					
	1 1135701 55500 3510		ATH O/MIS	ATH OF/MIS		112.00					
							112.00				
						CHECK TOTAL	112.00				
15395	RONALD BALBONI	0000		INV	03/10/2026	2026-486		345700	471006		
	ACCOUNT DETAIL					LINE AMOUNT					
	1 1135701 55500 3510		ATH O/MIS	ATH OF/MIS		112.00					
							112.00				
						CHECK TOTAL	112.00				
115730	MARIANNE BURKE	0000		INV	03/10/2026	2026-448		345701	471007		
	ACCOUNT DETAIL					LINE AMOUNT					
	1 1135701 55500 3510		ATH O/MIS	ATH OF/MIS		60.00					
							60.00				
						CHECK TOTAL	120.00				
115730	MARIANNE BURKE	0000		INV	03/10/2026	2026-449		345702	471008		
	ACCOUNT DETAIL					LINE AMOUNT					
	1 1135701 55500 3510		ATH O/MIS	ATH OF/MIS		60.00					
							60.00				
						CHECK TOTAL	120.00				
201330	JOHN CURSEADEN	0000		INV	03/10/2026	2026-487		345703	471009		
	ACCOUNT DETAIL					LINE AMOUNT					
	1 1135701 55500 3510		ATH O/MIS	ATH OF/MIS		112.00					
							112.00				
						CHECK TOTAL	112.00				
24608	DANIEL HILL	0000		INV	03/10/2026	2026-488		345704	471010		
	ACCOUNT DETAIL					LINE AMOUNT					
	1 1135701 55500 3510		ATH O/MIS	ATH OF/MIS		112.00					
							112.00				
						CHECK TOTAL	112.00				
21813	ROBERT W. JELLEY	0000		INV	03/10/2026	2026-399		345705	471011		
	ACCOUNT DETAIL					LINE AMOUNT					
	1 1135701 55500 3510		ATH O/MIS	ATH OF/MIS		60.00					
							60.00				
						CHECK TOTAL	60.00				

PRELIMINARY CITY OF MELROSE WARRANT REPORT

Detail Invoice List

WARRANT: S26063 03/10/2026

CASH ACCOUNT: 00		104200		EASTERN VENDOR 1132						
VENDOR	REMIT	PO	TYPE	DUE DATE	INVOICE	AMOUNT	DOCUMENT	VOUCHER	CHECK	
					CHECK TOTAL	60.00				
16827	TOM WALSH	0000	INV	03/10/2026	2026-489		345706	471012		
	ACCOUNT DETAIL				LINE AMOUNT					
	1	1135701	55500 3510	ATH O/MIS	ATH OF/MIS	112.00				
					CHECK TOTAL	112.00				
8 INVOICES		WARRANT TOTAL				740.00	740.00			

PRELIMINARY CITY OF MELROSE WARRANT REPORT

Preliminary Warrant Summary

WARRANT: S26063 03/10/2026

FUND	ORG	ACCOUNT	AMOUNT	AVLB BUDGET
0111	1135701	ATHLETICS OFFICIALS/M 0111-3-000-000-35-701-00-50-55500 -3510	AT OFFICIAL SALARY 740.00	102,834.84
FUND TOTAL			740.00	
WARRANT SUMMARY TOTAL			740.00	
GRAND TOTAL			740.00	

PRELIMINARY CITY OF MELROSE WARRANT REPORT

Warrant List by Voucher

WARRANT: S26063 03/10/2026

VOUCHER	VENDOR	DOCUMENT	INVOICE	PO	TYPE	DUE DATE	AMOUNT	COMMENT
471005	20327 SEBASTIANO AMARA	345699	2026-485		INV	03/10/2026	112.00	BOYS VARSITY ICE HOCK
471006	15395 RONALD BALBONI	345700	2026-486		INV	03/10/2026	112.00	BOYS VARSITY ICE HOCK
471007	115730 MARIANNE BURKE	345701	2026-448		INV	03/10/2026	60.00	SCOREBOARD BOYS JR VA
471008	115730 MARIANNE BURKE	345702	2026-449		INV	03/10/2026	60.00	SCOREBOARD GIRLS JR V
471009	201330 JOHN CURSEADEN	345703	2026-487		INV	03/10/2026	112.00	GIRLS VARSITY ICE HOC
471010	24608 DANIEL HILL	345704	2026-488		INV	03/10/2026	112.00	GIRLS VARSITY ICE HOC
471011	21813 ROBERT W. JELLEY	345705	2026-399		INV	03/10/2026	60.00	ANNOUNCER UNIFIED VAR
471012	16827 TOM WALSH	345706	2026-489		INV	03/10/2026	112.00	GIRLS VARSITY ICE HOC
WARRANT TOTAL							740.00	

PRELIMINARY CITY OF MELROSE WARRANT REPORT

DATE: 03/10/2026
WARRANT: S26064
AMOUNT: 16,718.94

Kerriann Golden
CFO/City Auditor

To the Accounting Office:
The following named bills of the School Department amounting in the
agreed to total above are hereby approved and you are requested to
place them on a warrant payment.

Approved: _____

CITY OF MELROSE v2024.7 LIVE



PRELIMINARY CITY OF MELROSE WARRANT REPORT

Paid Invoice List

WARRANT: S26064 03/10/2026

CASH ACCOUNT: 00 104316		EASTERN HS SA 1510										
VENDOR	VENDOR NAME	REMIT	INVOICE	DOCUMENT	PO	TYPE	DUE DATE	AMOUNT	VOUCHER	CHECK	COMMENT	
	BOSTON RED SOX	00000	811559	345672		DD	03/03/2026	8,000.00	470975	20733	CHECK# 4162: CLAS	
	NASSP/NHS	00001	9001977516	345674		DD	03/03/2026	385.00	470978	20734	CHECK# 4168: NAT	
	MASSACHUSETTS M	00001	1/31/26 HS AL	345675		DD	03/03/2026	150.00	470980	20735	CHECK# 4173: CH	
	MASSACHUSETTS M	00001	1/31/26 MS AL	345679		DD	03/03/2026	100.00	470983	20736	CHECK# 4174: CH	
	NORTH SUBURBAN	00000	1308	345680		DD	03/03/2026	620.00	470984	20737	CHECK# 4175: CH	
	MELROSE CITY -	00000	SHP103025	345681		DD	03/03/2026	193.38	470985	20738	CHECK# 4176: CL	
	RILEY, DAVID A.	00000	05/26/26 SENS	345682		DD	03/03/2026	360.00	470986	20739	CHECK# 4177: CL	
	ROSE BRAND	00001	956445	345683		DD	03/03/2026	280.56	470987	20740	CHECK# 4178: DR	
	NESBA	00000	1822	345684		DD	03/03/2026	200.00	470988	20741	CHECK# 4179: CO	
	BLESSED SACRAME	00001	01/31/26 SHO	345685		DD	03/03/2026	100.00	470989	20742	CHECK 4180: COL	
	BLACK	00000	JASON & THE	345687		DD	03/03/2026	375.00	470992	20743	CHECK# 4182	
	NORTH SUBURBAN	00000	1317	345688		DD	03/03/2026	1,240.00	470993	20744	CHECK# 4183: DR	
	MASSACHUSETTS	00000	0029575-IN	345690		DD	03/03/2026	4,340.00	470995	20745	CHECK# 4185: ST	
	BLACK	00000	METAMORPH	345691		DD	03/03/2026	375.00	470997	20746	CHECK# 4186: ST	
TOTAL FOR CASH ACCOUNT:00		104316						16,718.94				

PRELIMINARY CITY OF MELROSE WARRANT REPORT

DATE: 03/10/2026
WARRANT: S26065
AMOUNT: 1,625.00

Kerriann Golden
CFO/City Auditor

To the Accounting Office:
The following named bills of the School Department amounting in the agreed to total above are hereby approved and you are requested to place them on a warrant payment.

Approved: _____

PRELIMINARY CITY OF MELROSE WARRANT REPORT

Detail Invoice List

WARRANT: S26065 03/10/2026

CASH ACCOUNT: 00		104200		EASTERN VENDOR 1132						
VENDOR	REMIT	PO	TYPE	DUE DATE	INVOICE	AMOUNT	DOCUMENT	VOUCHER	CHECK	
22214	COMCAST HOLDINGS COR	0001	26301008	INV	03/10/2026	265531556	345725	471033		
ACCOUNT DETAIL						LINE AMOUNT				
1	1199000	55500	2420	SYS-WIDE	SYS EQUIP	1,625.00				
							1,625.00			
						CHECK TOTAL	1,625.00			
1 INVOICES						WARRANT TOTAL	1,625.00	1,625.00		

PRELIMINARY CITY OF MELROSE WARRANT REPORT

Preliminary Warrant Summary

WARRANT: S26065 03/10/2026

FUND	ORG	ACCOUNT	AMOUNT	AVLB BUDGET
0111	1199000	SYSTEM-WIDE 0111-3-000-000-99-000-00-00-55500 -2420	SW MAINTENANCE OF EQU 1,625.00	61,770.23
FUND TOTAL			1,625.00	
WARRANT SUMMARY TOTAL			1,625.00	
GRAND TOTAL			1,625.00	

PRELIMINARY CITY OF MELROSE WARRANT REPORT

Warrant List by Voucher

WARRANT: S26065 03/10/2026

VOUCHER	VENDOR	DOCUMENT	INVOICE	PO	TYPE	DUE DATE	AMOUNT	COMMENT
471033	22214 COMCAST HOLDINGS COR	345725	265531556	26301008	INV	03/10/2026	1,625.00	FY26 FEBRUARY INTERNE
WARRANT TOTAL							1,625.00	

PRELIMINARY CITY OF MELROSE WARRANT REPORT

DATE: 03/10/2026
WARRANT: S26066
AMOUNT: 30.72

Kerriann Golden
CFO/City Auditor

To the Accounting Office:
The following named bills of the School Department amounting in the
agreed to total above are hereby approved and you are requested to
place them on a warrant payment.

Approved: _____

PRELIMINARY CITY OF MELROSE WARRANT REPORT

Paid Invoice List

WARRANT: S26066 03/10/2026

CASH ACCOUNT: 00 104200 EASTERN VENDOR 1132											
VENDOR	VENDOR NAME	REMIT	INVOICE	DOCUMENT	PO	TYPE	DUE DATE	AMOUNT	VOUCHER	CHECK	COMMENT
	MASS COMM (REVE	00000	FEBRUARY 2026	26628		DD	03/10/2026	30.72	470930	20730	FEBRUARY 2026
TOTAL FOR CASH ACCOUNT:00 104200								30.72			

PRELIMINARY CITY OF MELROSE WARRANT REPORT

DATE: 03/10/2026
WARRANT: S26067
AMOUNT: 175.00

Kerriann Golden
CFO/City Auditor

To the Accounting Office:
The following named bills of the School Department amounting in the agreed to total above are hereby approved and you are requested to place them on a warrant payment.

Approved: _____

PRELIMINARY CITY OF MELROSE WARRANT REPORT

Paid Invoice List

WARRANT: S26067 03/10/2026

CASH ACCOUNT: 00 104319 EASTERN MS SA 7683											
VENDOR	VENDOR NAME	REMIT	INVOICE	DOCUMENT	PO	TYPE	DUE DATE	AMOUNT	VOUCHER	CHECK	COMMENT
	JOSHUA HENRY	00000	6/8/26	8TH GRADE	26301118	DD	03/10/2026	175.00	470951	20732	MVMMS CLASS OF 2030
TOTAL FOR CASH ACCOUNT:00 104319								175.00			

PRELIMINARY CITY OF MELROSE WARRANT REPORT

DATE: 03/10/2026
WARRANT: S26068
AMOUNT: 5,000.00

Kerriann Golden
CFO/City Auditor

To the Accounting Office:
The following named bills of the School Department amounting in the agreed to total above are hereby approved and you are requested to place them on a warrant payment.

Approved: _____

PRELIMINARY CITY OF MELROSE WARRANT REPORT

Paid Invoice List

WARRANT: S26068 03/10/2026

CASH ACCOUNT: 00 104200 EASTERN VENDOR 1132											
VENDOR	VENDOR NAME	REMIT	INVOICE	DOCUMENT	PO	TYPE	DUE DATE	AMOUNT	VOUCHER	CHECK	COMMENT
	RESERVE ACCOUNT	00001	FY26 MARCH	345888	26301068	DD	03/10/2026	5,000.00	470940	20731	FY26 POSTAGE 716650
TOTAL FOR CASH ACCOUNT:00 104200								5,000.00			

Initial Approval (one year prior) Date submitted: 2/25/26

School Committee Approval (six months prior) Date submitted: _____

Final Approval, if required (three months prior) Date submitted: _____

Please complete all of the information requested below when submitting a field trip request for approval. If an item does not apply, please indicate N/A.

International trips are authorized by the School Committee.

All approvals are required prior to the scheduled field trip.

Grade(s) or Class(es): 9-12 School: MHS

Destination: Hamburg, Germany

Departure: the week prior to April vacation 2027 Departing From Logan Airport

Return: April vacation 2027 Returning To Logan Airport

Number of Students Attending: 20 Ratio of Chaperones to Students: 10:1

Room/Cabin/Housing Assignments and Supervision Plan :students reside at host partner's home

Behavior Contract To be collected Medical Release Forms Obtained To be collected

Signed Field Trip Parental Consent and Release from Liability Agreement Forms To be collected

Accommodations/Modifications Needed _____

Means of Transportation/# of vehicles __airplane, buses, train _____

Cost of Trip (including % paid by fundraising) approxiamately \$2,500 per student

Educational Objectives: Curriculum related __X__ Co-curricular _____ Interscholastic _____

Daily Itinerary, if applicable (attach separate copy)

Submitted by Michelle Stepp Date: 2-25-26

Approved by Principal* J. Merrill Date: 2/27/26

Approved by Superintendent Cam B... Date: 3/2/26

Approved by School Committee _____ Date: _____

*NOTE: A field trip involving students from multiple schools must have the written approval of all building principals.

Summary for GAPP Exchange 2026-2027

The Language Exchange program in Melrose Public Schools is designed to support students in the development of a broad range of useful oral communication and interpersonal skills. Students will practice, in the most authentic manner, the 21st century skills of working together, expressing and listening carefully to ideas, integrating information from oral, visual, quantitative, and media sources, evaluating what they hear, and adapting speech to context and task.¹ This program is also aligned with goals one and six of the Melrose Public Schools Strategic Plan, by providing students preparation for a post-secondary experience and building partnerships within the global community to foster understanding and learning.² Finally, the Language Exchange programs are one of the five pillars of the Global Education in Melrose (GEM) program whose three tenets are to think globally, contribute responsibly, and communicate effectively.³

The most specific goal of this program is for Melrose High School students to practice and to improve their German language skills. At the same time, they will be learning about German culture as well as the history and cultural roots of the western world while exploring major historic and cultural sites in Hamburg and surrounding cities. This trip presents an opportunity for developing German linguistic abilities in an immersive environment and a unique opportunity for students to do this while immersed in another culture that shaped their own.

Melrose High School students are planning to go to Hamburg, Germany in April 2027. They will be there for a total of 2 weeks and stay with host families. They will visit and tour historic and cultural sites of Hamburg and surrounding cities. When communicating with chaperones and other students they must always be communicating in German.

¹Massachusetts Curriculum Framework for English Language Arts and Literacy, March 2011, p. 10

²Melrose Public Schools Strategic Plan 2010-2015, pp. 39-40

³Melrose High School Program of Studies 2012-2013, p. 7-8

Tentative Itinerary for Melrose Gapp April 2027

Final dates TBD based on host school's schedule and available flights

April 7- students fly from Boston to Hamburg

April 8 Students arrive in Hamburg and are picked up by Host Family, option to go to Gymnasium Ober Alster and shadow partner for rest of day

April 9-11 weekend with host families

April 12 students shadow partner, . Empfang at school in evening

April 13 day trip to Berlin, students to visit multiple sites

April 14 students shadow partner and also meet with Herr Advani's 5 grade English class for interviews and discussions regarding cultural differences

April 15 Students shadow partners

April 16 weekend spent with host families

April 17 field trip to Neuengamme work camp

April 18 students shadow partners

April 19 students shadow partners

April 20 depart for Boston/ Melrose

Topic Ideas for discussion :

Immigration in both the US and Germany

Cultural differences between teens in Germany and the US and social media



**Melrose Public Schools
Administrative Offices**

360 Lynn Fells Parkway, Melrose, MA 02176

Melanie Acevedo
Executive Director of Academics & Accountability
(781) 979-2108
macevedo@melroseschools.com

To: Melrose School Committee

cc: Ken Kelley, Interim Deputy Superintendent

From: Melanie Acevedo, Executive Director of Academics & Accountability
Molly Brothers, Roosevelt Library Media Specialist

Subject: Roosevelt Library- Weeded Titles

Date: 3/10/26

To make room on the shelves for updated and popular books, routine weeding occurs at each school library. Ms. Brothers has identified 259 damaged, duplicate, outdated, and non-circulating books to weed from the Roosevelt Library collection. Books in good condition will be donated to students or to a non-profit for reuse. Damaged books will be recycled.

We would like to thank and acknowledge the Roosevelt School PTO for continuing to support our library with new titles for our students to enjoy.

YEAR-TO-DATE BUDGET REPORT

FOR 2026 12

	ORIGINAL APPROP	TRANFRS/ADJSTMTS	REVISED BUDGET	YTD EXPENDED	ENCUMBRANCES	AVAILABLE BUDGET	PCT USED
0111 SCHOOL GENERAL FUND							
NO PROJECT	150,000.00	1,463,942.00	1,613,942.00	.00	1,552,000.00	61,942.00	96.2%
1110 SCHOOL COMMITTEE	11,000.00	.00	11,000.00	8,983.66	.00	2,016.34	81.7%
1210 SUPERINTENDENT	384,246.18	.00	384,246.18	273,734.87	97,301.71	13,209.60	96.6%
1410 BUSINESS AND FINANCE	241,775.00	.00	241,775.00	161,226.34	142,102.59	-61,553.93	125.5%
1420 HUMAN RESOURCES AND BENEFIT	333,156.52	.00	333,156.52	226,317.81	79,533.60	27,305.11	91.8%
1430 LEGAL SVCS FOR SCHOOL COMM	65,000.00	.00	65,000.00	30,343.60	20,051.40	14,605.00	77.5%
1450 DISTRICT-WIDE INFO MGMT &	76,860.39	.00	76,860.39	54,239.57	24,122.24	-1,501.42	102.0%
2110 CURRICULUM DIR (SUPERVISOR	1,485,662.22	.00	1,485,662.22	877,078.14	665,389.56	-56,805.48	103.8%
2120 DEPART HEADS (NON-SUPERVIS	58,000.00	.00	58,000.00	2,000.00	.00	56,000.00	3.4%
2210 SCHOOL LEADERSHIP-BUILDING	2,159,879.26	274,925.00	2,434,804.26	1,487,299.07	932,720.30	14,784.89	99.4%
2305 TEACHERS, CLASSROOM	24,100,684.89	909,308.00	25,009,992.89	12,753,542.53	11,148,977.10	1,107,473.26	95.6%
2320 MEDICAL/THERAPUTIC SERVICE	3,209,183.27	.00	3,209,183.27	1,574,182.84	1,512,922.39	122,078.04	96.2%
2325 SUBSTITUTE TEACHERS	313,754.97	.00	313,754.97	172,050.24	18,048.42	123,656.31	60.6%
2330 NON-CLER PARAPROF/INSTRUCT	3,219,882.76	.00	3,219,882.76	1,926,355.23	1,053,872.89	239,654.64	92.6%
2340 LIBRARIANS AND MEDIA CTR D	287,451.70	.00	287,451.70	162,077.38	119,764.35	5,609.97	98.0%
2356 INSTRUCT STAFF PD	3,000.00	.00	3,000.00	20,200.00	.00	-17,200.00	673.3%
2357 PROF DEV STIP, PROVIDERS &	10,000.00	.00	10,000.00	3,864.00	.00	6,136.00	38.6%
2358 OUTSIDE PD PROVIDERS FOR I	15,500.00	.00	15,500.00	7,649.97	3,900.00	3,950.03	74.5%
2410 TEXTBOOKS/SOFTWARE/MED/MAT	250,040.00	1,469,500.00	1,719,540.00	173,114.20	1,473,306.15	73,119.65	95.7%
2415 OTHER INSTRUCTIONAL MATERI	164,800.00	.00	164,800.00	71,111.53	6,349.07	87,339.40	47.0%
2420 INSTRUCTIONAL EQUIPMENT	183,750.00	.00	183,750.00	98,740.99	42,711.80	42,297.21	77.0%
2430 GENERAL SUPPLIES	86,750.00	.00	86,750.00	40,678.33	1,736.66	44,335.01	48.9%
2440 OTHER INSTRUCTIONAL SERVIC	191,500.00	.00	191,500.00	189,458.86	205.06	1,836.08	99.0%
2710 GUIDANCE	840,937.21	.00	840,937.21	457,744.17	375,939.04	7,254.00	99.1%
2800 PSYCHOLOGICAL SERVICES	871,620.11	.00	871,620.11	474,968.92	402,492.44	-5,841.25	100.7%
3200 MEDICAL/HEALTH SERVICES	7,000.00	.00	7,000.00	.00	5,000.00	2,000.00	71.4%
3300 TRANSPORTATION SERVICES	2,340,935.59	.00	2,340,935.59	1,134,879.97	970,107.09	235,948.53	89.9%
3510 ATHLETICS	1,009,766.03	.00	1,009,766.03	674,818.91	158,312.18	176,634.94	82.5%
4130 UTILITY SERVICES	22,000.00	.00	22,000.00	11,501.51	9,277.27	1,221.22	94.4%
4220 MAINTENANCE OF BUILDINGS	1,000.00	.00	1,000.00	8.00	.00	992.00	.8%
4400 TECH INFRA MAINT SUPPT - S	185,270.65	.00	185,270.65	116,785.04	57,820.48	10,665.13	94.2%
4450 TECH INFRA MAINT SUPPT - A	55,910.40	.00	55,910.40	39,984.88	.00	15,925.52	71.5%
5260 OTHER NON EMPLOYEE INSURAN	37,900.00	.00	37,900.00	36,258.00	.00	1,642.00	95.7%
5500 CROSSING GUARDS	1,100.00	.00	1,100.00	188.00	.00	912.00	17.1%
5550 CROSSING GUARDS	168,200.00	.00	168,200.00	50,908.80	.00	117,291.20	30.3%
9300 TUITION TO NON-PUBLIC SCHO	3,959,000.00	.00	3,959,000.00	1,549,852.14	1,813,969.10	595,178.76	85.0%
9400 TUITION TO COLLABORATIVE	1,146,482.85	.00	1,146,482.85	281,144.60	513,333.17	352,005.08	69.3%
TOTAL SCHOOL GENERAL FUND	47,649,000.00	4,117,675.00	51,766,675.00	25,143,292.10	23,201,266.06	3,422,116.84	93.4%
GRAND TOTAL	47,649,000.00	4,117,675.00	51,766,675.00	25,143,292.10	23,201,266.06	3,422,116.84	93.4%

** END OF REPORT - Generated by Claudine Sweeney **

YEAR-TO-DATE BUDGET REPORT

REPORT OPTIONS

Sequence	Field #	Total	Page Break
Sequence 1	1	Y	N
Sequence 2	12	Y	N
Sequence 3	0	N	N
Sequence 4	0	N	N

Report title:
YEAR-TO-DATE BUDGET REPORT

Includes accounts exceeding 0% of budget.
 Print totals only: Y
 Print Full or Short description: S
 Print full GL account: N
 Format type: 2
 Double space: N
 Suppress zero bal accts: Y
 Include requisition amount: N
 Print Revenues-Version headings: N
 Print revenue as credit: Y
 Print revenue budgets as zero: N
 Include Fund Balance: N
 Print journal detail: N
 From Yr/Per: 2025/ 1
 To Yr/Per: 2025/ 1
 Include budget entries: Y
 Incl encumb/liq entries: Y
 Sort by JE # or PO #: J
 Detail format option: 1
 Include additional JE comments: N
 Multiyear view: F
 Amounts/totals exceed 999 million dollars: N

Year/Period: 2026/12
 Print MTD Version: N

Roll projects to object: N
 Carry forward code: 2

Field Name	Field value
Fund	0111
FUNCTION	
UMAS/GRT YR	
DEP/GRT LINE	
LOCATION	
PROGRAM	
S.R. CODE	
EXP CAT/LEVL	
Character Code	
Org	
Object	
Project	
Account type	Expense

YEAR-TO-DATE BUDGET REPORT

REPORT OPTIONS

Account status
Rollup Code

FY26 Offset Projections

The Melrose Public School District judiciously uses revolving accounts, for specific purposes and in accordance with the budget. It is important to note that the balance of each account fluctuates over time, both during the course of the year (as funds flow in and are expended) and from year to year. Thus we cannot assume that the same amount of budget support from each revolving account is or will be available every year. The following revolving accounts are used as applied funds, i.e. to offset portions of the Melrose Public Schools budget

Fund #	Fund Name	Budgeted	7/30/25 Current Bal.	8/31/25 Current Bal.	9/30/25 Current Bal.	10/31/25 Current Bal.	11/30/25 Current Bal.	12/31/25 Current Bal.	1/31/26 Current Bal.	2/28/26 Current Bal.	Budget Variance
1601	Athletics/Co-Curricular Revolving	\$324,000.00	\$162,198.63	\$163,765.19	\$209,309.98	\$307,841.98	\$317,984.10	\$372,322.08	\$452,915.58	\$469,575.85	\$ 145,575.85
1603	Facility Rentals	\$260,000.00	\$124,960.40	\$153,657.97	\$177,297.04	\$227,249.24	\$239,326.98	\$276,921.00	\$298,208.07	\$309,403.68	\$ 49,403.68
1643	Facility B	\$125,000.00	\$492,821.24	\$492,821.24	\$492,821.24	\$492,821.24	\$492,821.24	\$492,821.24	\$492,821.24	\$492,821.24	\$ 367,821.24
1851	Education Stations	\$1,400,000.00	\$730,326.76	\$670,620.44	\$763,615.90	\$983,680.00	\$1,058,135.05	\$1,485,464.98	\$1,635,034.04	\$1,990,328.51	\$ 590,328.51
1620	Medicare	\$225,000.00	\$56,454.23	\$56,454.23	\$56,454.23	\$54,248.14	\$54,248.14	\$54,248.14	\$54,248.14	\$51,269.78	\$ (173,730.22)
1850	ECC Revenue	\$375,000.00	\$400,781.09	-\$724,230.98	-\$613,387.96	-\$488,474.51	-\$363,740.28	-\$131,031.18	-\$12,918.58	\$226,302.76	\$ (148,697.24)
1627	CB	\$2,100,000.00	\$1,337,563.02	\$2,372,512.17	\$2,372,512.17	\$2,847,553.17	\$2,847,553.17	\$3,322,594.17	\$3,322,594.17	\$3,322,594.17	\$ 1,222,594.17
1200	Cafe Revolving	\$150,000.00	\$1,505,186.48	\$1,543,034.59	\$492,724.21	\$612,614.99	\$796,134.27	\$934,595.65	\$1,184,413.53	\$1,466,412.49	\$ 1,316,412.49
n/a	Special Ed. Stab. req	\$250,000.00									\$ (250,000.00)

Melrose Public Schools

School Committee Mtg.



Education Stations FY27 Proposed Tuition & Program Options

Presented by
Jennifer Proulx, *Education Stations Director*



Recommendation



Align & Streamline Pick-up

Eliminate the 3:30 pick-up time to align with other in-house after school programs. Other programs only offer 1 pick-up option.



Optimize Staffing & Resources

3:30 enrollment is low and not financially beneficial to the district. Also difficult to staff for 1 hour.



Enhance Flexibility

Allow families flexibility of 6 different options for schedules for 5:30.



Peer Group Alignment

Students will be able to be in the same group and activities as their peers of the same age.



Sustainable 2% Increase

Only a 2% increase to cover supply/snack increases. 2% increase will also allow staff accrued sick time. All Friday options will include Friday Early Release.



Competitive Staffing & Rates

Increase Early Bird Rates to \$15 a day. This would align with other districts and allow for staff to have competitive wages.

FY27				
	<u>FY26</u>	<u>Increase</u>	<u>FY27 Annual Rate</u>	<u>FY26 Monthly Rate</u>
Elementary 2 day 5:30 (T/TH)	\$ 2,331	\$ 47	\$ 2,378	\$ 264
Elementary 3 day 5:30 (M/W/F) or (T/W/F) includes ER days	\$ 3,436	\$ 319	\$ 3,755	\$ 417
Elementary 3 day 5:30 (T/W/Th)	\$ 3,436	\$ 69	\$ 3,505	\$ 389
Elementary 4 day 5:30 (M-Th)			\$ 5,232	\$ 581
Elementary 5 day 5:30 (M-F) includes ER days	\$ 5,767	\$ 365	\$ 6,132	\$ 681
	<u>FY26</u>	<u>Increase</u>	<u>FY27 Annual Rate</u>	<u>FY26 Monthly Rate</u>
Pre-K 2 day 5:30 (TH/F) includes ER days	\$ 3,108	\$ 312	\$ 3,420	\$ 380
Pre-K 3 day 5:30 (M-W)	\$ 4,507	\$ 90	\$ 4,597	\$ 511
Pre-K 3 day 5:30 (M/W/F) or (T/W/F) includes ER days	\$ 4,507	\$ 340	\$ 4,847	\$ 539
Pre-K 4 day 5:30 (M-Th)			\$ 7,117	\$ 791
Pre-K 5 day 5:30 (M-F) includes ER days	\$ 7,615	\$ 402	\$ 8,017	\$ 891

M



Recommendation Early Bird



Increase early bird rates to \$15 day. This would increase to \$292 a month for families for 5 day.



This would allow for staff to receive competitive wages



Early Bird start would remain the same at 7am.



Secondary Participation Fees Recommendation

Melrose High School

FY26 - 10% increase approved, including caps

Cost	Tier	Fall	Tier	Winter	Tier	Spring
\$110	1	Drama	1	Drama	1	Drama
\$165	2	Marching Band Color Guard	2	Winter Guard	2	
\$275	3	Cross Country Competitive Cheer	3	Cheer	3	Track & Field
\$385	4	Girls Swim Field Hockey Volleyball Golf Soccer	4	Basketball Gymnastics Indoor Track Wrestling Boys Swim	4	Baseball Lacrosse Softball Tennis
\$550	5	Football	5		5	
\$715	6		5	Ice Hockey	6	

10% increase: Individual Cap \$1,265

Family Cap \$1,705



Secondary Participation Fees Recommendation

Melrose High School Fiscal Year 27 recommendation

Cost	Tier	Fall	Tier	Winter	Tier	Spring
\$110	1	Drama	1	Drama	1	Drama
\$165	2	Marching Band Color Guard	2	Winter Guard	2	
\$275	3	Cross Country Competitive Cheer	3	Cheer	3	Track & Field
\$385	4	Girls Swim Field Hockey Volleyball Golf Soccer	4	Basketball Gymnastics Indoor Track Wrestling Boys Swim	4	Baseball Lacrosse Softball Tennis
\$550	5	Football	5		5	
\$650 (FY25)	6		5	Ice Hockey	6	

Individual Cap \$1,265

Family Cap \$1,705



Secondary Participation Fees Recommendation

FY27 MHS

Cost	Tier	Fall	Winter	Spring
\$110	1	Drama	Drama	Drama
\$165	2	Marching Band Color Guard	Winter guard	

Individual Cap \$1,265

Family Cap \$1,705

MVMMS

Cost	Fall	Winter	Spring
\$100	Drama	Drama	Drama

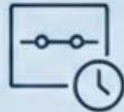


Secondary Fees

Melrose High School Fiscal Year '27 fee considerations



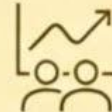
Maintains the new Middle School Drama Fee introduced for FY26 in addition to existing fee based activities



Given the significant 10% fee increase for FY26, recommendation is to keep current structure and revisit increases for FY28



FY26 budgeted fee revenue is on track as of March 2026



Projections based on enrollment/participation which is variable, FY26 participation is on par with prior year



Unknown impact of potential increased costs on student participation - increased hardship requests, do not want barriers



Secondary Fees

Melrose High School Fiscal Year '27 fee considerations

Considerations

- Maintains the new Middle School Drama Fee introduced for FY26 in addition to existing fee based activities
- Given the significant 10% across the board fee increase for FY26 the recommendation is to keep the current fee structure and revisit potential increases for FY28
- FY26 budgeted fee revenue is on track as of March 2026
- Projections based on enrollment/participation which is variable, FY26 participation is on par with prior year
- Unknown impact of potential increased costs on student participation
 - increased hardship requests, do not want barriers to participation

Melrose Public Schools

School Committee Mtg.



Franklin FY27 Proposed Tuition & Program Options

Tuesday,
Presented by

Ken Kelly, Director of Finance and Administrative Affairs & Andrea LaCau, Franklin Principal,

M

Franklin Preschool Objectives



Review Franklin Enrollment Trends & ROI

Addressing needs & return on investment.



Clearly Articulate Franklin Budget Drivers

- District budget (Special Education and Kindergarten)
- Revolving budget (Tuition)



Ensure Franklin Preschool Program Remains Self-Sufficient

FY27 tuition proposal



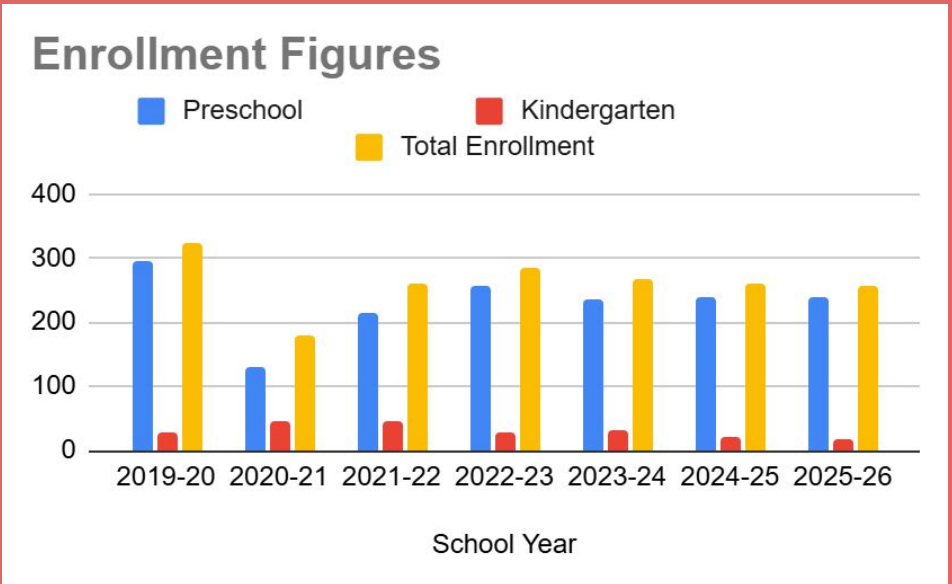
Franklin Preschool & Kindergarten Enrollment Trends

School Year	Preschool Enrollment	Kindergarten Enrollment	Total Enrollment
2019-20	296	27	323
2020-21	130	45	179
2021-22	215	47	260
2022-23	258	28	286
2023-24	236	32	268
2024-25	238	22	260
2025-26	240	17	257



Franklin Preschool & Kindergarten Enrollment Trend

School Year	Preschool Enrollment	Kindergarten Enrollment	Total Enrollment
2019-20	296	27	323
2020-21	130	45	179
2021-22	215	47	260
2022-23	258	28	286
2023-24	236	32	268
2024-25	238	22	260
2025-26	240*	17	257



*Includes 50 SPED students, some tuition waived



Franklin Preschool

Program Options & Enrollment Projection

Program Options 5 hrs 15 min	2023-24 Number of Classes	2023-24 Enrollment	2024-25 Number of Classes	2024-25 Enrollment	2025-26 Number of Classes	2025-26 Enrollment	26-27 Projected Classes	26-27 Projected Enrollment
2 Day full day	1	21	1	21	2	33	2	30
3 Day full day	1	35	2	46	2	41	2	40
5 Day full day	14	180	11	171	11	166	12	170
Totals	15	236	14	238	13	240*	14	250

*Includes 50 SPED students, some tuition waived



Franklin Special Education & Kindergarten

Return On Investment

Meeting the Needs of our Students with IEP Services

- **Focus on transitions**
 - Early Intervention to Preschool
 - PreK to K
 - K to 1
- **DESE Compliance**
 - All IEPs signed and services implemented
 - Least Restrictive Environment
 - Tiered Intervention
- **Increasing Demands**
 - Individual Needs of Students considered high needs
 - Tier I, Tier II and Tier III Preschool student needs
- **Return on Investment**
 - Continuation of DLC Model at Franklin
 - Continued Implementation and expanding use of ACES Curriculum
 - SEC at Franklin 5 days a week
 - Coordination of related service providers to support all classroom teachers



Franklin Special Education & Kindergarten Return On Investment

Meeting the Needs of our Students with IEP Services



Focus on Transitions

- Early Intervention to Preschool
- PreK to K
- K to 1



DESE Compliance

- All IEPs signed and services implemented
- Least Restrictive Environment
- Tiered Intervention



Increasing Demands

- Individual Needs of Students considered high needs
- Tier I, Tier II and Tier III Preschool student needs



Return on Investment

- Continuation of DLC Model at Franklin
- Continued Implementation and expanding use of ACES Curriculum
- SEC at Franklin 5 days a week
- Coordination of related service providers to support all classroom teachers



Franklin Special Education Needs

District Budget Obligation

School districts are obligated under state and federal law and regulations to provide a free and appropriate public education for students, in the least restrictive setting from the age of 3 until a student earns their high school diploma or turns 22 years old.

	Student Support Team	Special Education Evaluations	IEP Preschool Program	IEP Kindergarten Integrated Placement	IEP Related Services Only
2022-23	37	69	45	4	32
2023-24	34	55	39	6	28
2024-2025	47		52	12	
2025-2026	41	67*	50	8	12


*As of 3/3/26








Franklin Special Education Needs

District Budget Obligation



 School districts are obligated under state and federal law and regulations to provide a free and appropriate public education for students in the least restrictive setting from the age of 3 until a student earns their school diploma or turns 22 years old.

	Student Support Team 	Special Education Evaluations 	IEP Preschool Program 	IEP Kindergarten Integrated Placement 	IEP Related Services Only 
2022-23	37	69	45	4	32
2023-24	34	55	39	6	28
2024-2025	47		52	12	
2025-2026	41	67*	50	8	12



*As of 3/3/26



Budget Requests

Increases to Instructional Supplies:

- Funding for continued development of Preschool Curriculum (included in District Curriculum Budget)

Additional Staffing

- 2 full time SPED licensed teachers (1 replacement for FY 26 retirement, 1 reinstatement from budget cuts)
- 1 para position for teacher added back to budget





Franklin Preschool

Revolving Budget Return On Investment

Meeting the Needs of ALL Students and Families

- **Maintain program options**
 - 5 day, 3 day and 2 day
 - **Expand Education Stations program offerings to meet the needs of families (Vacation Weeks, Summer, Before & After School)**
- **Maintaining 14-15 integrated preschool classes**
 - Enrolling students throughout the year
 - Working collaboratively with Education Stations
- **Increase Tier II Supports**
 - Positive Behavior Intervention Supports (PBIS)
 - Student Support Team (SST)
- **Curriculum Development and Implementation**
 - Building on Standards Based Curriculum
 - Purchasing of materials for 5 preschool planning teams
 - Developing a Website for Teachers



Franklin Revolving Budget Drivers

Meeting Contractual Obligations

- Meeting contractual obligations of early childhood educator and paraprofessional salaries

Meeting the Needs of our Students and Families

- Continue to work toward full year/full day/extended day early childhood program
- Continue to build on standards based early learning curriculum and materials
- Increase access to Tiered Interventions at Preschool level



Franklin Preschool Tuition

Revolving Budget

	<i>GOAL: ECC Preschool Tuition Based Program Remains Self Sufficient</i>
FY20 & FY21	2.5% Increase
FY 22	3% Increase
FY23	5% Increase
FY24	8% Increase
FY25	5% Increase
FY26	7% Increase
FY27	4% Increase*

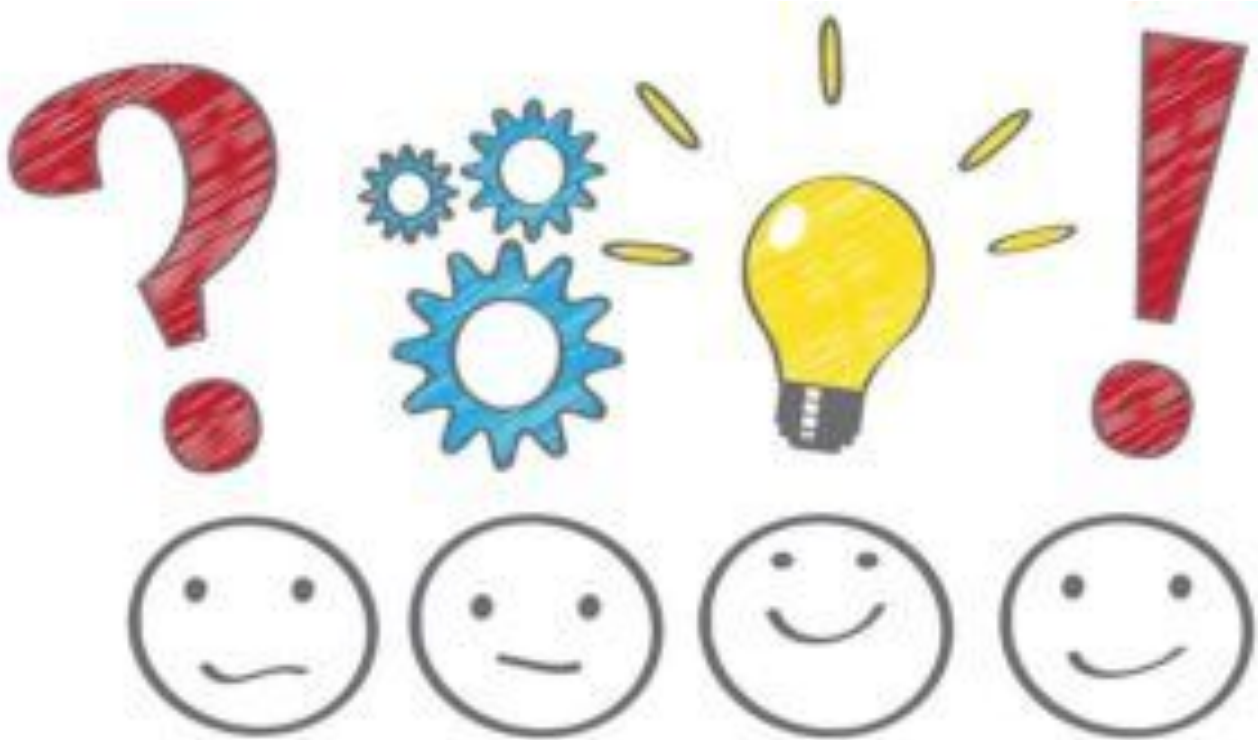


FY27 Tuition Recommendation

Program 5 Hrs 15 Min	FY 26 Tuition Current Rates	FY27 Tuition 3% Increase	FY27 Tuition 4% Increase
2 Day	\$5,065.56	\$5,217.53	5,268.18
3 Day	\$6,442.42	\$6,635.69	6,700.12
5 Day	\$11,036.24	\$11,367.33	11,477.69



Questions and Comments



Melrose Public Schools
and
City of Melrose
Financial Landscape
Budget Connections



Financial Landscape

Budget Connections





➤ City Financial landscape

- Focus on **stability** and maintaining/improving bond rating
 - Accomplished through adhering to financial practices/management
- Melrose is a great city with a great school system
 - City is almost entirely residential, which limits new commercial growth
 - All City services supported by residential property taxes
 - **In the middle, little commercial growth combined marginal state funding from Unrestricted Gen. Gov't Aid (UGGA) growth, and minimum Chapter 70 state education funding (Ch70) compared to some area communities**
 - **FY23/24 saw investment in Ch70, otherwise minimal growth in UGGA/Ch70**
 - Melrose is challenged by a 95% residential tax base, financial burden is not shared with commercial growth
 - City's projected new revenues for FY27 would be estimated at \$2,838,699(2.5%+500,000 estimated new growth). This number would have to cover all departmental increases and 12 CBAs and benefit increases.



➤ City Financial landscape

- MPS is one of many City Departments
- 2 FYs with reductions of both employees and services across City and Schools
 - Recent history - financial challenges
 - 2019 override
 - 2022 revenue deficit at ECC funded through ARPA, and budget deficit accelerated use of ESSER and ARPA funds
 - 2023+2024 city subsidized \$2.5million each year for special education costs
 - 2025 increase reliance on local receipts to fund \$2.5million structural deficit
 - City has prioritized funding MPS in the past two budget cycles
 - High levels of collaboration to move away from gap and one time funding
 - Proposed override question in June 2024 which was unsuccessful
 - Increased City appropriation, which created reduction on City services and personnel
 - City has increased budgeting local receipts to 85% - free cash impacts
 - November 2025 override election was successful
 - The override funding supports City wide functions, services, and staffing restoring 17 School and 5 City positions

MPS and City connection - Financial Landscape



➤ City Financial landscape

- November 2025 override election stabilized and restored some reductions
 - MPS returns 17 FTEs and Curriculum resources and City returns 5 FTEs
 - Restores to original FY26 reduction gap
 - Supports MPS with over \$8.6 in investments - personnel and infrastructure

Schools \$8,688,852.00	School Building Maintenance & Improvements \$4,345,052.00	MHS - Bathrooms Renovation MHS - Courtyard Stairs MVMMS - Solar Inverter Repairs MVMMS - Front Stairs and Sidewalk Repairs MVMMS - HVAC Control Upgrades Winthrop School - Doors & Masonry Repairs All Schools - Asbestos Remediation
	Instruction & Learning \$3,818,800.00	Restore 17 Positions \$1,649,000.00 Current Fiscal Year Contractual Obligations \$529,000.00 Curriculum Materials \$1,469,500.00 Instructional Technology \$171,300
	School Technology Needs \$525,000.00	School Security Cameras MHS - Projector Upgrades Districtwide - PA System Upgrades Back Up Power Modernization Elementary Schools - Chromebook Replacements



➤ City Financial landscape

- MPS Budget is Teaching and Learning - approx. 93% fixed costs
 - Drivers are CBAs, personnel salary, and Special Education tuitions/transportation
 - Funds appropriated by City and generated through fee based revenue
- **Significant City supports to MPS in addition to appropriating funds for Teaching and Learning**
 - **Health Department - School Nurses/Health Offices, state mandates**
 - **MPD - two SROs assigned at Schools**
 - **DPW - Facilities budget, Custodial, utilities, maintenance, fields, snow and ice**
 - **Citywide IT - staff and capital projects**
 - **Legal - School staff, Property and Casualty Insurance**
 - **Vocational assessment including debt assessment of new building**
 - **HR - Benefits/Retirement**
 - City Health Benefit is highly competitive and affordable
 - FY26 employee 18/82 split/opt out program
 - FY26+ retiree 15/85 split and 70% medicare coverage
 - Unemployment tax, workers comp.
 - Non MTRS retirement/pension for City and Schools employees



➤ City Financial landscape

- Other Considerations facing the City that impact resources and decisions
 - OPEB mandate - currently 1% funded
 - Fully funded by 2040, aggressive funding schedule in the out years to meet the requirement
 - Almost \$7million annual cost
 - Pension obligation for all non MTRS employees with Schools
 - Vocational and Charter assessments Governor's proposed FY27 budget
 - City responsible to fund its share assessed against state aid.
 - Charter cost over \$5 million, Voc. cost is just under \$200,000
 - Budgeting local receipts at 85% will reduce available free cash
 - Public Safety construction project approved by voters - debt exclusion impacts taxpayers
 - City bond rating is AA+ - strong bond saves City borrowing costs, makes more resources available to the City - similar to personal credit score
- Long term liabilities are being looked at now and are a factor of the bond rating



➤ City Financial landscape

■ Takeaways

- City is typically limited to 2.5% revenue increase from property taxes
 - Successful override stabilized City services and Departments but is not unlimited resources
 - **Melrose does not receive substantial state aid, either Ch70 or UGGA, yet experiences the same cost increases**
- City invests significant resources in MPS
 - City appropriation for Teaching and Learning
 - City Departments costs that directly support MPS
 - City Benefits - **very competitive in today's market**
- Bottom line - Working very hard to balance annual increases for salaries and services to the City with stable budget

FY26 STUDENT OPPORTUNITY ACT PLAN PROGRESS REPORT TEMPLATE

Note: For reference only. Progress reports will be submitted in DESE's [Grants Education Management System](#)(GEM\$)

[Publish to the Web Link](#)

[Google Form Feedback](#)

Key Evidence-Based Programs in District's SOA Plan

In this section, you will indicate which evidence-based programs are detailed in Section 5 of your district's SOA Plan (FY25-FY27)

Please select the evidence-based programs that are detailed in Section 5 of your district's SOA Plan (FY25-FY27). (Select all EBPs that apply)

- 1.2B- Comprehensive Tiered Supports
- 2.2B- High Leverage Practices for Students with Disabilities
- 2.4C- Effective Programming for Multilingual Learners

Section 1: Summary of Progress to Date (Academic Year 2025-2026)

In this section, you will summarize:

- steps taken to launch, expand, or deepen the implementation of the evidence-based programs in your SOA Plan;
- early evidence of change related to your implementation; and
- evidence of gap-closing on interim and longer-term outcomes for student groups targeted in your SOA Plan

*** Implementation Activities: During academic year 2025-2026, what steps did your district take to launch, expand, or deepen the implementation of each EBP in your SOA Plan?**

During the 2025-2026 academic year, we began with significant staff reductions resulting from the budget voted in spring 2025. Despite these challenges, academic and social-emotional growth and success are at the forefront of every decision made for all students. This is particularly true for Middle School, Students with Disabilities, and Multilingual Learners, our groups identified for progress monitoring as part of this SOA Plan.

Middle School:

- A new leadership structure provided more consistent support to MVMMS students and staff.
- A reset of PBIS school-wide expectations was established at the start of the 2025-26 school year to improve the climate and culture for the MVMMS community.
- Staff meetings and professional development are focused on grading practices (ensuing grades reflect standard mastery) and identifying tier 2 supports and interventions.
- Re-envisioning of the Student Support Team process.
- Provided a small group of 5th & 6th grade educators with the opportunity to have a discussion about supporting students during the transition from elementary school to middle school during the November PD day.
- All MVMMS educators participated in a school-wide data meeting to review and develop an action plan based on beginning-of-year data.
- Addition of a Literacy course and Math Lab 2x/week that complements the 4x/week English Language Arts and Math Courses for all grade 6 & 7 students.
- Title 1 afterschool tutoring to support Reading Tier 2 Intervention

- 6th Grade ELA classes are utilizing materials from MyPerspectives to provide consistent instruction across all classrooms. MyPerspectives is the middle school-level curriculum for the MyView Literacy program used in the elementary schools. Additional professional development has been provided for educators using this curriculum.

Students with Disabilities:

- As part of the central office team restructure, added co-interim Special Education Directors.
- Special Education Coordinators meet weekly with the Special Education Directors to ensure consistent practices and protocols across all buildings.
- Provided training for 36 educators in Orton-Gillingham. This included general and special educators across grade levels.
- Developed a Special Education Advisory Committee to examine literacy/reading practices, school avoidance & mental health concerns, and Access & Developmental Learning Center (DLC) programming. Each sub-committee is developing an action plan based on its work this year to be implemented next year.
- Regular examination of disaggregated data at the school, grade/course, teacher, and individual student levels. Action planning for tier 2 and 3 interventions based on data review.

Multilingual Learners:

- Middle & High School MLLs grouped by WIDA level, not by grade.
- Expansion of MLLs at all elementary schools for grades K-2.
- Unpacking of DESE’s MLL Blueprint and self-assessment to determine areas of strength and opportunities for growth of current programming.
- Exploration/pilot of new curriculum resources to differentiate between newcomer/beginner MLLs and more advanced MLLs.
- ELLevation platform provides professional learning tied with specific student data

*** Early evidence of change: Please describe and reflect upon the extent to which progress monitoring data reflects early evidence of change (e.g., changes in actions, discourse, beliefs, expectations, and instructional practice) that you anticipate will ultimately lead to improved outcomes and smaller disparities in outcomes for student groups targeted in your SOA Plan?**

The actions above and those implemented in previous years of the SOA Plan have shown early evidence of change for each of the measured Evidence-Based Programs (EBPs). With significant staff reductions and leadership changes, the district has focused on three values in all its work: Accountability, Belonging, and Consistency. This has provided Melrose Public Schools with the opportunity to reset many of its practices. The hope is that these shifts and refocus on practices will lead to improved student outcomes, as evidenced by some early signs of change noted here.

1.2B- Comprehensive Tiered Supports

In all grades, tiered supports have been a focus across all subject areas. Expectations for tier 1 instruction have been revisited in all schools and discussed frequently during collaborative prep time and faculty meetings. The leadership team and teacher leaders have been revising the Core Instructional Practices that are expected look fors in all courses and grades. There is also a newly developed shared understanding of the need for high-quality instructional materials (HQIM) in order to support strong tier 1 instruction. The leadership team has also been recalibrating evaluation practices to provide consistent feedback to all educators, both with a coaching mindset and as part of the formal evaluation process.

Tier 2 and 3 supports are discussed regularly, informed by qualitative and quantitative data sources across grades. Beginning at our annual MTSS PD Day, school teams worked to create a resource tool kit of tier 2 interventions by content. Teachers, especially at the middle and high school levels, have been attempting to use these resources more regularly.

Additionally, at the beginning of the year, data meetings, all teachers created short-term action plans for students who were not yet meeting expectations. Additionally, student support teams are asking educators to be more deliberate in tracking the success of tier 2 interventions suggested as part of the meeting process. Conversations with educators district-wide indicate a stronger understanding and implementation of tier 2 supports.

2.2B- High Leverage Practices for Students with Disabilities

With a renewed understanding of high-quality tier 1 instruction for all students, the district has critically examined IEP services and special education programming to ensure that all students are accessing grade-level standards and resources with appropriate scaffolding. One adjustment made to special education programming specifically was during the 2025 summer. Extended school year services and our Title I and III Summer Learning Academy merged into one comprehensive summer program for students in grades K-12. During the 2025-26 school year, schedules were examined to ensure students with disabilities had maximum access to grade-level tier 1 instruction, especially in ELA & Math courses.

With the addition of Special Education Directors, whose purpose is to critically examine and provide recommendations to better support students with disabilities, there has been enhanced collaboration between special education staff, general education staff, and leadership. The creation of the ad hoc advisory committee has also engaged more stakeholders beyond the special education coordinators in leading discussions and reviewing best practices for working with students with disabilities.

2.4C- Effective Programming for Multilingual Learners

The resetting of expectations around high-quality tier 1 instruction has also had a positive impact on MLLs. Utilizing the data and professional development provided by the ELlevation platform, teachers have been better able to scaffold specifically for each of the domains: speaking, listening, reading, and writing. This academic year has been focused on critically examining practice and identifying next steps for improvement next year.

*** Progress in closing disparities for student groups in your district:**

- Please describe and reflect upon the extent to which progress monitoring data on interim and longer-term student outcomes reflects the following:
- improvement for the student groups targeted in your SOA Plan;
- reduced disparities for student groups targeted in your SOA Plan;
- progress towards meeting targets for the lowest performing students group

This [spreadsheet](#) examines 3 years of data used to analyze progress monitoring for the district, with a focus on our targeted groups.

The actions implemented in previous years of the Student Opportunity Act (SOA) Plan have shown early evidence of change for each of our measured Evidence-Based Programs (EBPs). Amidst significant staff reductions and leadership transitions, the district has anchored its work in three core values: Accountability, Belonging, and Consistency. This "reset" has allowed us to refine our instructional focus, and while challenges remain—particularly in secondary literacy—we are seeing promising early indicators of improved student outcomes.

1.2B: Comprehensive Tiered Supports

In all grades, tiered supports have been prioritized across all subject areas. The leadership team's focus on Tier 1 "look fors" and high-quality instructional materials (HQIM) is reflected in the steady growth seen in our Middle School (MVMMS) Math outcomes.

- MVMMS Math Growth: Middle school students improved from 41% Meeting/Exceeding at the Beginning of Year (BOY) to 45% at the Middle of Year (MOY).
- Addressing ELA Disparities: While Math shows progress, MVMMS ELA performance declined from 46% at BOY to 35% at MOY. This data reinforces our current focus on recalibrating evaluation practices to provide educators with a coaching mindset and specific feedback on literacy instruction.
- Tier 2/3 Interventions: At the beginning of the year, data meetings led to short-term action plans for students not yet meeting expectations. These interventions are likely contributing to the stabilized performance in Math, though the ELA decline suggests a need for more deliberate tracking of literacy-specific Tier 2 successes.

2.2B: High Leverage Practices for Students with Disabilities

The district has critically examined IEP services and special education programming to ensure maximum access to grade-level Tier 1 instruction. This shift is most visible in our Mathematics data, where students with disabilities (Sped) have achieved parity with the district average.

- Math Achievement Gap Closure: Students with disabilities showed exceptional growth in Math, rising from 22% at BOY to 45% at MOY. This matches the 45% District MOY average for Math.
- ELA Access: In ELA, performance for students with disabilities remained relatively flat, moving from 23% at BOY to 22% at MOY.
- Collaboration & Leadership: The addition of Special Education Directors and the ad hoc advisory committee has strengthened the collaboration between special and general education staff, ensuring that scaffolding for grade-level standards remains a central tenet of our 2025-26 scheduling.

2.4C: Effective Programming for Multilingual Learners

The resetting of expectations around high-quality Tier 1 instruction has yielded significant dividends for our Multilingual Learners (MLLs), particularly in Mathematics. By utilizing the ELlevation platform, teachers are better equipped to scaffold instruction across the four domains.

- Significant Math Progress: MLL students demonstrated a substantial increase in Math proficiency, jumping from 24% at BOY to 45% at MOY.
- Historical Context: This reflects a major long-term improvement from the 9% Math proficiency recorded for MLLs at the 2024-2025 BOY.
- Literacy Next Steps: ELA performance for MLLs remains a critical area for improvement, holding at 12% for the 2025-2026 MOY. This confirms the district's current focus on critically examining reading and writing practices to identify more effective scaffolding for the upcoming academic year.

Reflection on Progress

The data suggests that our "Consistency" value is paying off in Mathematics, where our targeted groups (MVMMS, Sped, and MLL) are now performing at or near the district average of 45%. However, the disparity in ELA—where the district average is 54% but our targeted groups range from 12% to 35%—underscores that work in Tier 1 instructional "look fors" must remain a top priority.

Section 2: Key Changes to Your Plan and Next Steps in Implementation

In this section, you will:

- describe any key changes or amendments to your district’s SOA Plan (if applicable); and
- briefly describe implementation plans for academic year 2026-27 to expand, deepen, and/or strengthen your implementation of the EBPs in your SOA plan (required)

If applicable, please describe any key changes to your district’s SOA plan that your stakeholders should be aware of (e.g., substantial shifts in your approach to EBPs in your SOA plan, significant changes to the 3-year budget; dropping or adding an evidence-based program.)

In November 2025, the residents of Melrose voted for a historic override to restore some of what had been eliminated over the past two budget cycles. This override allows the addition of 17 of the previously eliminated 40 positions. Additionally, these funds will allow for deferred curriculum purchases of HQIM for Math K-Algebra II, and EL materials that are significantly outdated. This infusion of funds and positions will support the district in enhancing the SOA plan Action steps. The progress monitored subgroups and EBPs identified in the plan will not be altered.

*** What steps will your district be taking to expand, deepen, and/or strengthen the implementation of the EBPs in its SOA Plan during the 2026-2027 school year?**

1.2B- Comprehensive Tiered Supports

- Purchase of a comprehensive Math Curriculum for grades K-Algebra II and Integrated I, II, and III.
- Implementation of MyPerspectives at MVMMS.
- Additional professional development on tiered supports using our core curriculum resources
- Additional professional development to support the intellectual preparation of units and lessons that move beyond lesson planning.
- Bring a full team to attend DESE’s Instructional Leaders Institute in August that includes leadership and teacher leaders.
- More structured approach to Grade 6 & 7 Literacy and Math Lab courses to strategically use data and provide tier 2 supports and interventions.
- Addition of two Reading Specialists to support grade 3-8 students with Literacy concerns not identified for special education services.

2.2B- High Leverage Practices for Students with Disabilities

- Implementation of the recommendations from the Special Education Ad-Hoc committee.
- Continuous review of services to ensure all students are accessing high-quality grade-level curriculum.
- Make adjustments to summer programming based on staff and family feedback.
- Provide additional training and support to staff in instruction that is universally designed to meet the needs of all learners.

2.4C- Effective Programming for Multilingual Learners

- Purchase of a curriculum that differentiates for newcomer/beginner students and more advanced students.
- Increase staffing at the elementary schools from 5.6 FTE to 6.0 FTE to provide equitable access to services at all elementary schools.
- Review the schedule to identify a block in each school as a short-term transition into US public schools for newcomer students.
- Implement WIDA Benchmarking 2-3 times per year via the ELlevation platform.
- Provide additional training and support to staff in instruction that is universally designed to meet the needs of all learners.
- Revison ELPAC to increase participation and involvement.

Section 3: Engaging Families/Caregivers and Other Stakeholders

In this section, you will describe:

- new activities implemented in 2025-2026 that engage families/caregivers, particularly those representing student groups experiencing the greatest disparities, about how to best address their students' needs;;
- evidence of progress to date in improving family/caregiver engagement, using the metrics in your SOA Plan (FY25-FY27);
- the ways in which your district engaged with different stakeholder groups, particularly those representing student groups experiencing disparities, throughout the 2025-2026 school year.

*** Please briefly describe any new efforts introduced in academic year 25-26 to engage families/caregivers, particularly those representing the student groups you have identified for targeted support, about how to best address their students' needs.**

Melrose Public Schools has a Special Education Parent Advisory Council (SEPAC), an English Language Learners Parents Council (ELPAC), a METCO Parent Advisory Council, and a Friends of Melrose METCO group (FOMM), all of which meet regularly with the administration. We hold regular ELL family nights and host Title I meetings, where, among other things, we discuss and review our core instructional practices and existing interventions and supports.

To provide more consistent information on student achievement, the curriculum office shared benchmark assessment results with all families this year. This provided guidance on interpreting the results and what steps to take if caregivers had questions or concerns. There was overwhelmingly positive feedback and a request to continue this practice.

*** Please share evidence of increased or improved engagement with families/caregivers, particularly those representing the student groups targeted in your SOA plan, during academic year 2025-26. (Districts may use the metrics described in their SOA Plans, or other relevant metrics)**

During the 2025-26 school year, our approach to family engagement events has shifted slightly to encourage greater participation, particularly from the target groups. At the middle school, the Deputy Principal has revived the School Site Council to have a stronger voice and more access to data to develop the School Improvement Plan. This year, we tied our in-person ELPAC meetings to other events. One of which was held before an in-person family night, and another is planned for before our Spring Bingo for Books. Attendance nearly doubled from past years at our fall ELPAC meeting.

- 1) *** Please briefly describe the following types of stakeholder engagement during the 2025-2026 school year, making certain to include information on stakeholders representing student groups targeted in your SOA plan:**
- 2) **how your district shared updates on SOA plan implementation and early evidence of change student outcomes with different stakeholder groups**
- 3) **the ways in which your district collected input and feedback from different stakeholder groups;**
- 4) **the substantive input and feedback you have received to date—and whether/how that has impacted your SOA plan implementation**

MPS is committed to transparency and collaboration in sharing updates on the implementation of our SOA plan and the early evidence of changes in student outcomes. We utilize existing systems and structures - such as MCAS and IXL reports for families, staff, and curriculum meetings, presentations to the School Committee, which are then shared with the broader community - to ensure that our communication reaches a wide range of stakeholders, including students, parents, educators, and community members. By leveraging established communication channels, we can provide timely and relevant information to all stakeholders.

Regarding the SOA progress report, we began by collaborating with our leadership team to gather metrics and narrate our progress. We then shared the progress report with the School Committee, and through email notifications and the Superintendent's Good News, we shared with our staff, families, and the community at large. Stakeholder groups were provided an opportunity to offer feedback prior to the submission of this report.

(This section may be updated further after sharing with School Committee in early March and with any feedback from the community once shared in the March Good News.)

Winter 2026 Mid-Year Overview



School Committee Presentation 3/10/26

Objectives:



- ❖ Provide an overview of FY26 district assessments
- ❖ Share data comparing beginning of year and mid year data
- ❖ Identify high level analysis and next steps based on data
- ❖ Answer questions from the committee

Assessment Tools & Vocabulary:

Assessment Tools

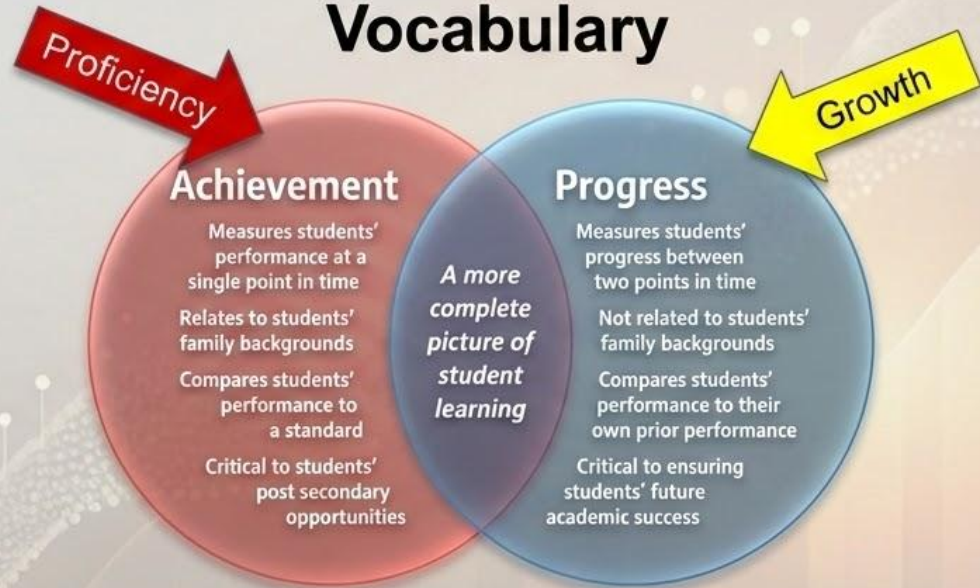
K-5 Foundational Reading Skills Screener



K-12 Diagnostic Benchmark Assessment



Vocabulary



Screener vs. Benchmark

Screener is a quick check on skills against a target.

Benchmark identifies a grade level equivalent usually using standards as a measure.

Student Experience during Winter Assessments

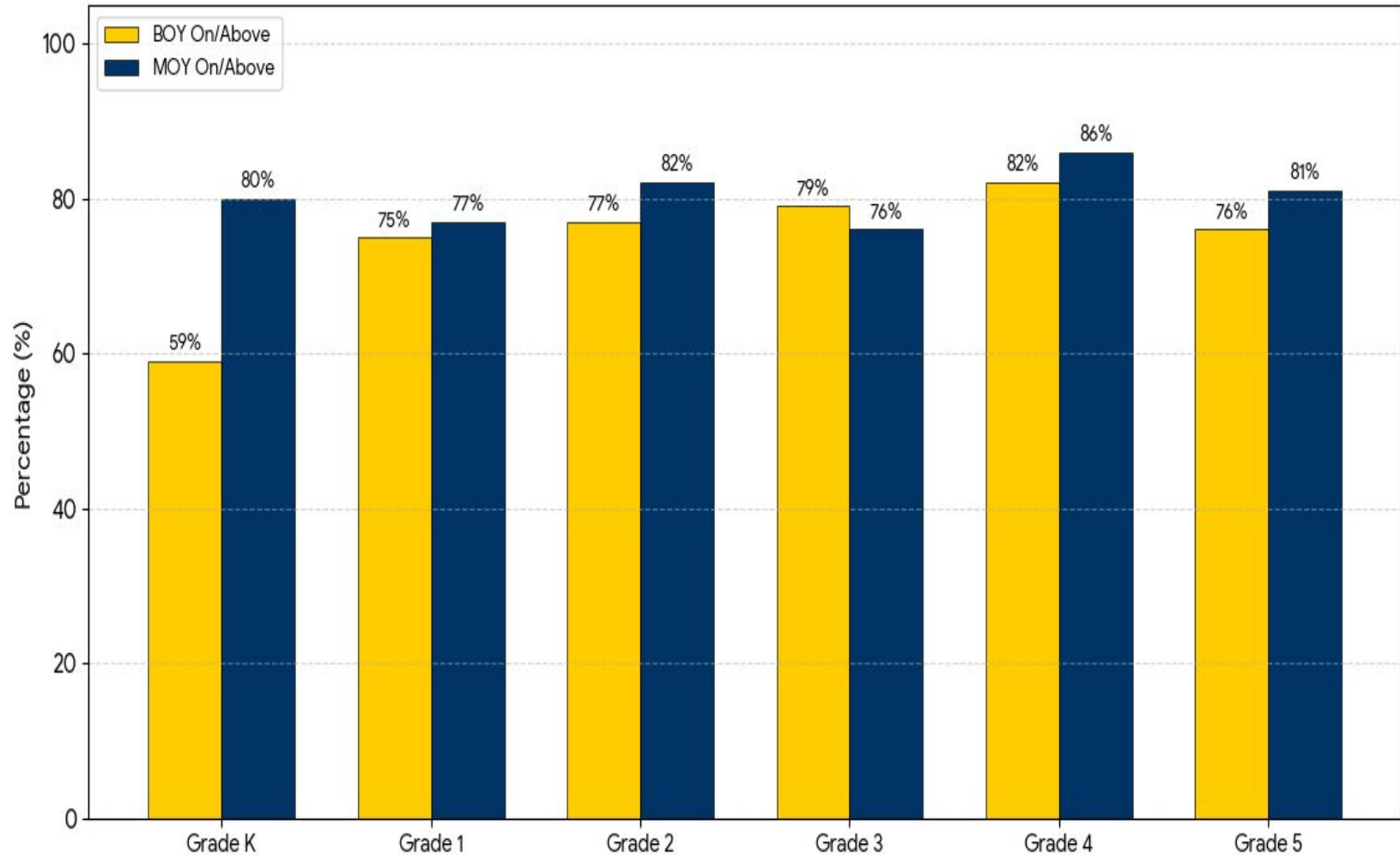
DIBELS

- ★ Administered 1:1
- ★ Multiple quick measures of early literacy skills
 - Letter Naming Fluency (K&1)
 - Phoneme Segmentation Fluency (K&1)
 - Nonsense Word Fluency (K-3)
 - Oral Reading Fluency (1-5)
 - MAZE (2-5)
- ★ Composite score

IXL

- ★ Student uses device to take benchmark
- ★ Adaptive assessment used to pinpoint grade level equivalent in ELA & Math
- ★ Approximately 45-60 minutes per subject
- ★ Goal is 100 points of growth for typical growth in a year; 150 points of growth for catch-up

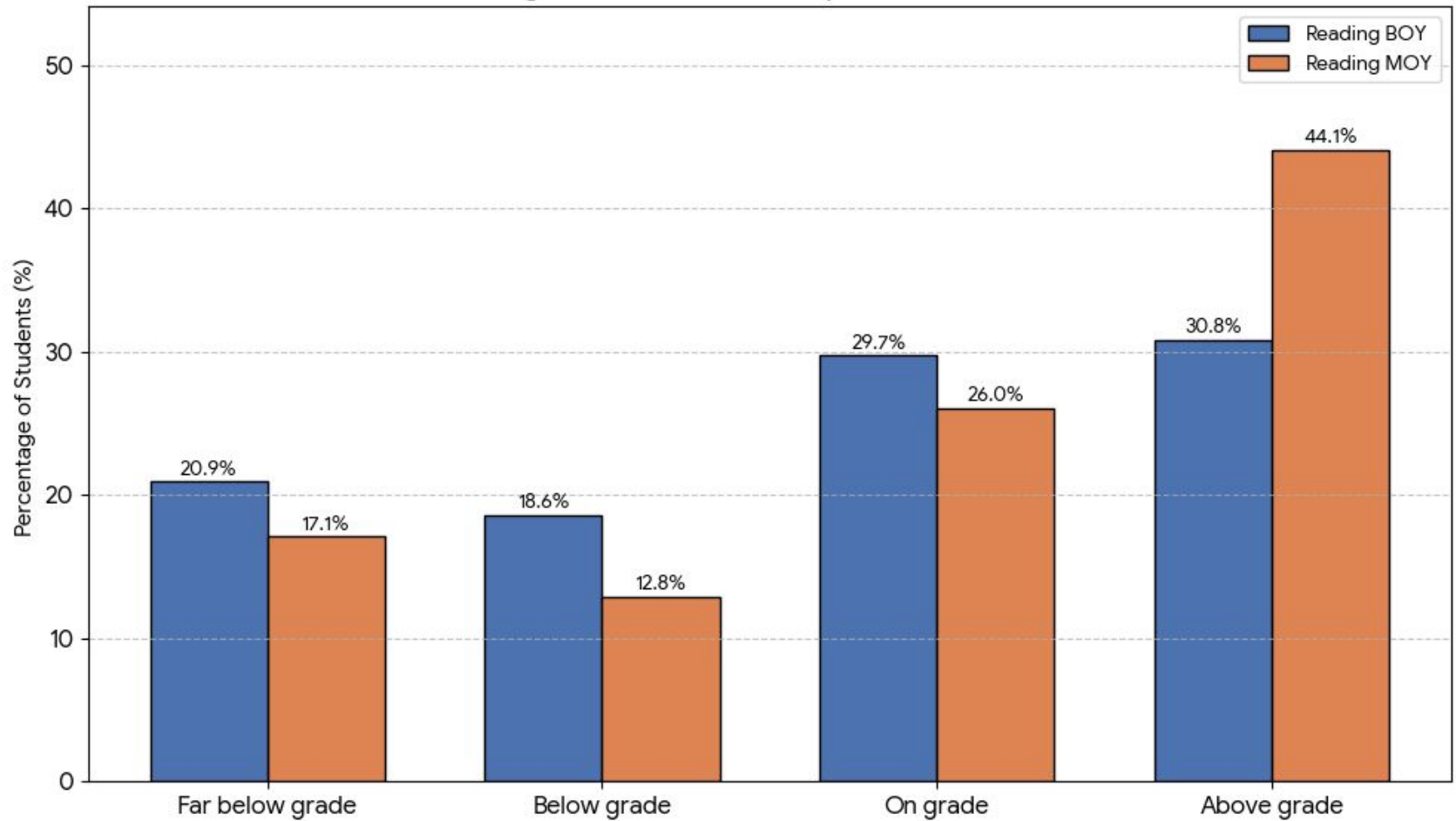
DIBELS Composite: BOY vs. MOY (On or Above) - By Grade



DIBELS data indicates strong early literacy skills and growth.

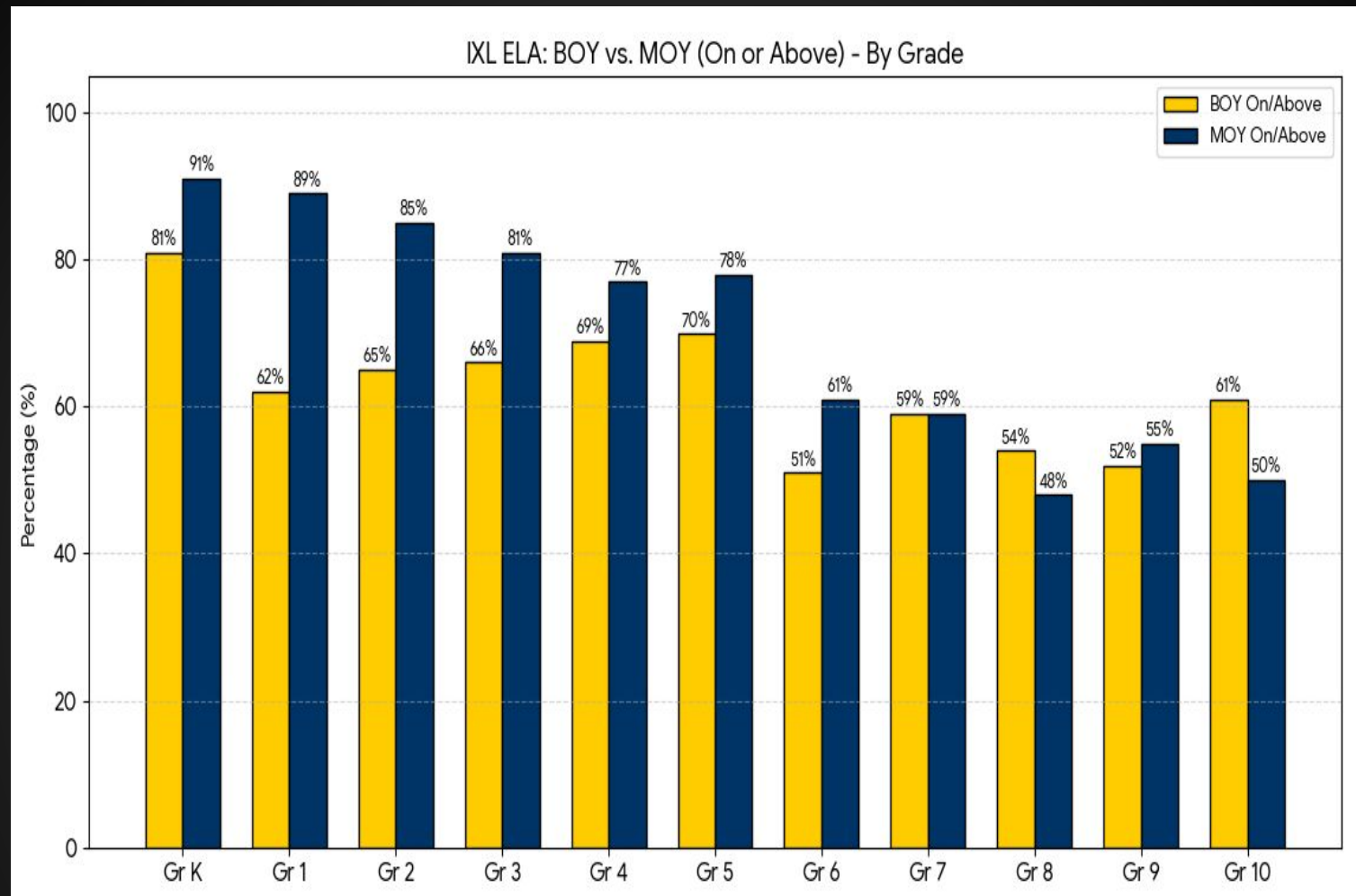
- Strong K growth
- Dip in Grade 3 composite score- slightly lower NWF subtest scores
- Grade 1, 2, 4 and 5 at or near 80% meeting expectations

Reading Tier Distribution Comparison: BOY vs MOY



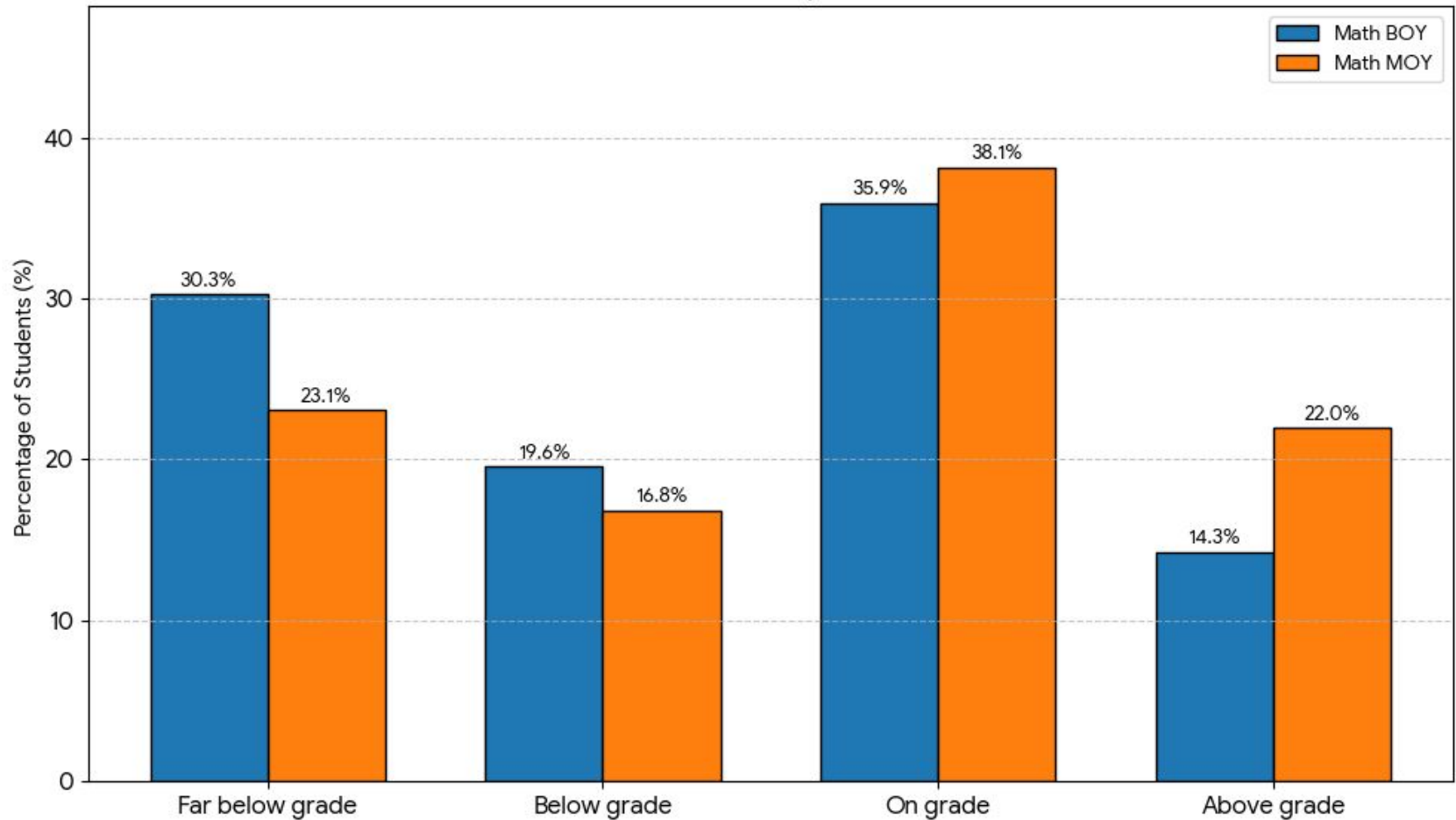
District trends moving in correct direction in IXL Reading Benchmarks

- On or above grade percentage increased 59% to 70% fall to winter.
- Far below and below grade level both decreased fall to winter.



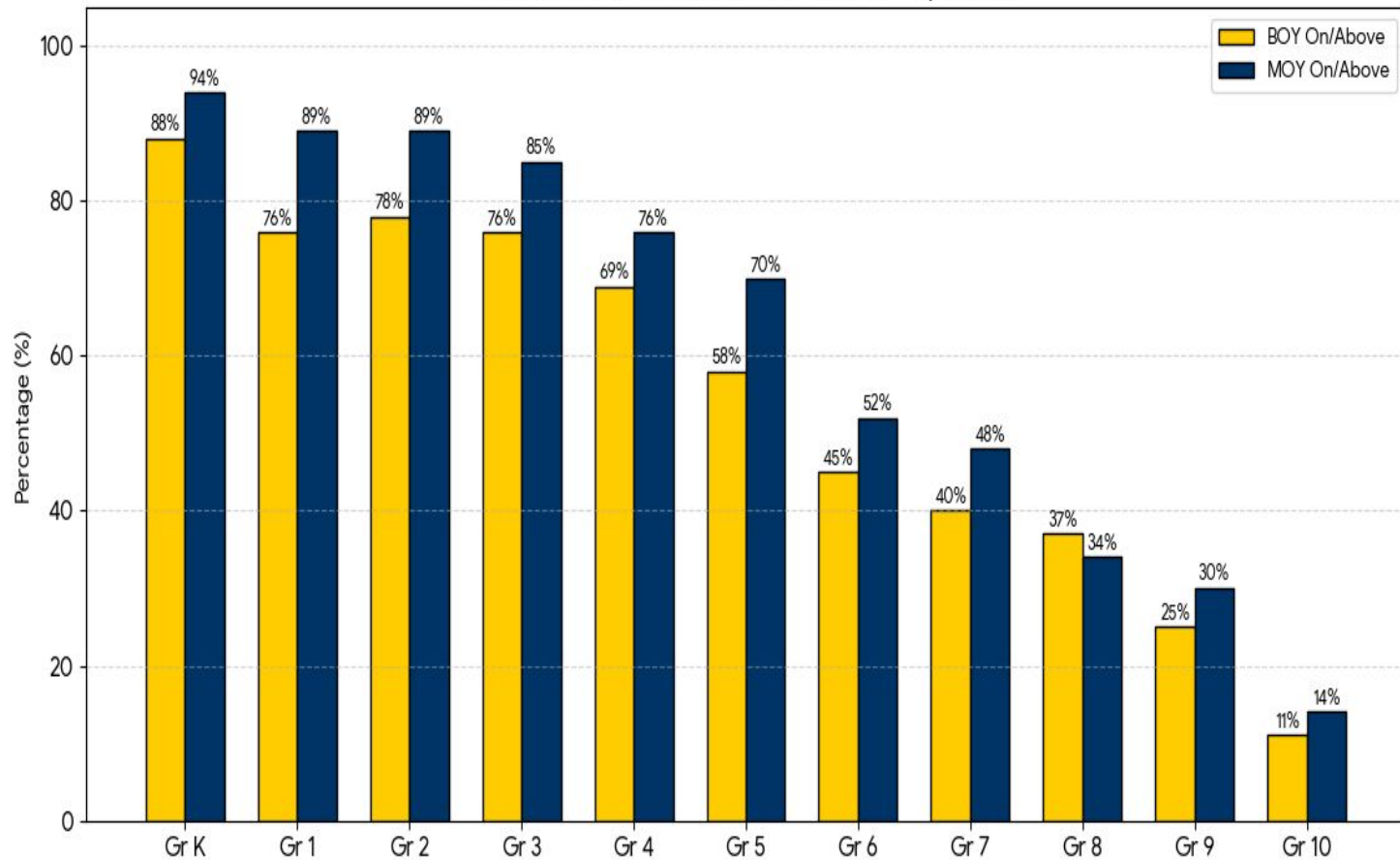
- District: 62%, K-5: 83%, 6-8: 56%, 9-12: 35%
- 29% of MHS students did not assess due to advanced courses or other conflicts
- Grades K-3 highest growth- Tiered supports are most consistent

Math Tier Distribution Comparison: BOY vs MOY



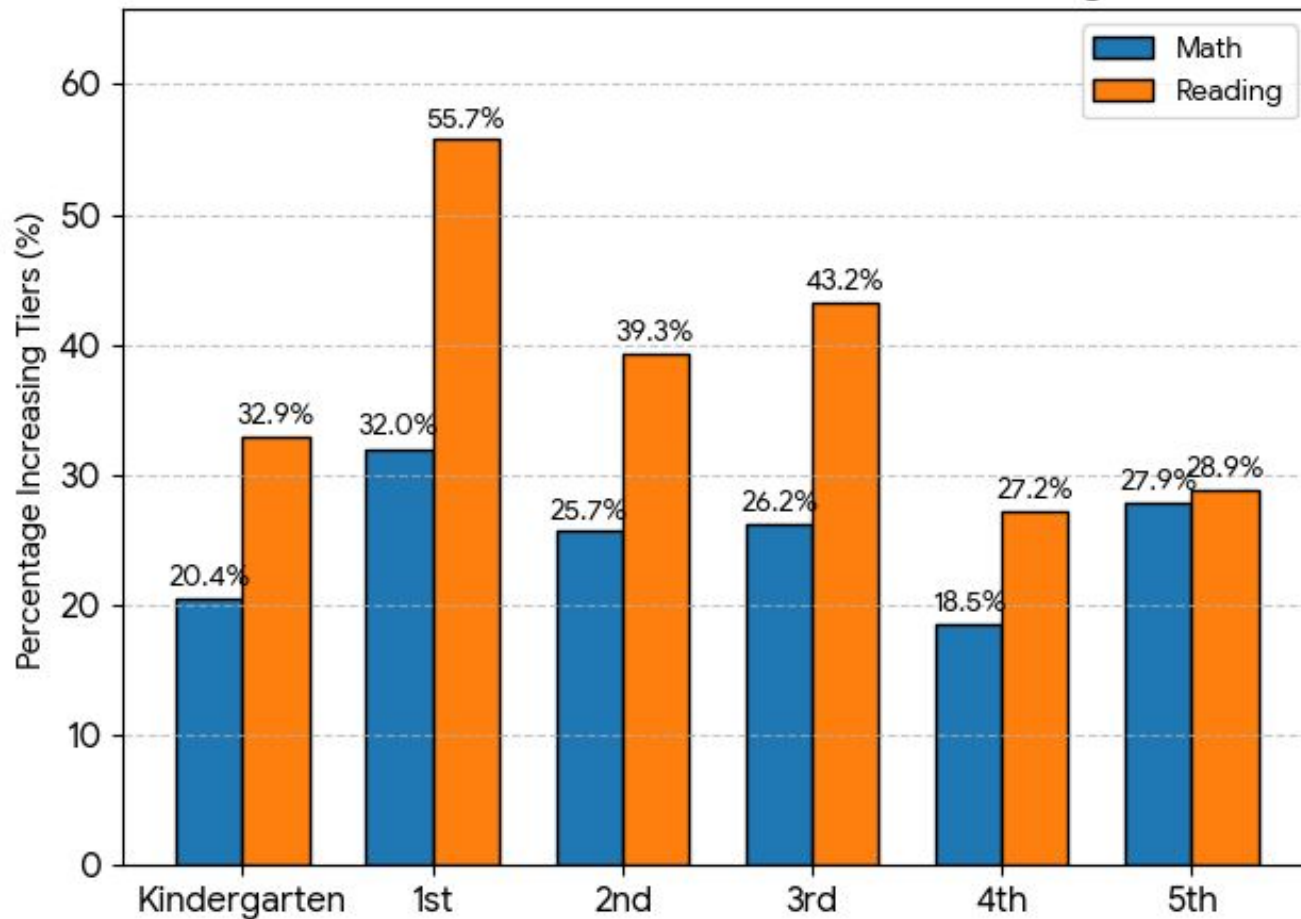
- District trends moving in correct direction in IXL Math Benchmarks
- On or above grade percentage increased 50% to 60% fall to winter.
 - Far below and below grade level both decreased fall to winter.

IXL Math: BOY vs. MOY (On or Above) - By Grade



- District: 52%, K-5: 83%, 6-8: 45%, 9-12: 11%
- 34% of MHS students did not assess due to advanced courses or other conflicts
- Growth in almost every grade; decline in proficiency in secondary

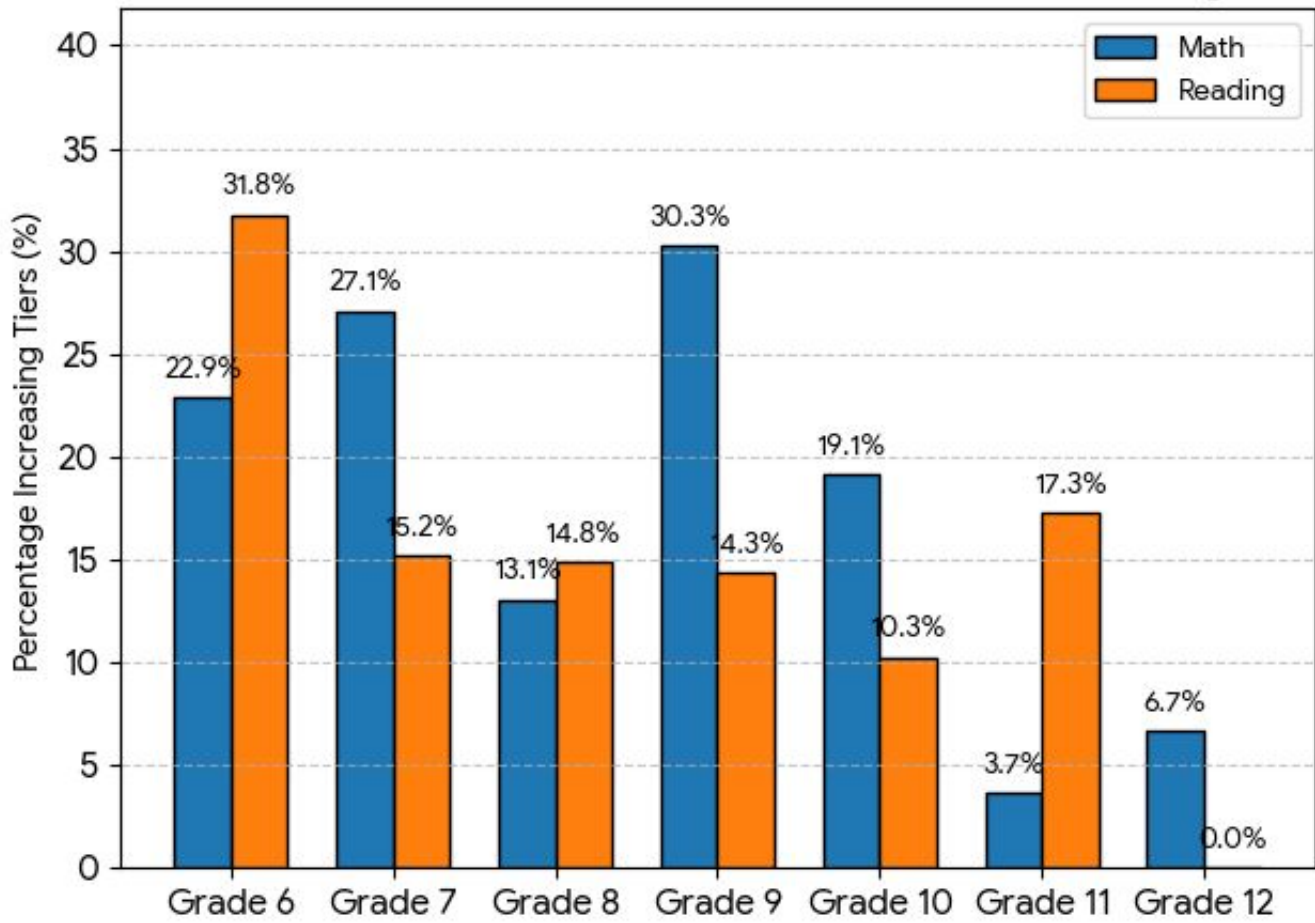
BOY to MOY Growth: % of Students Increasing Tiers



Elementary Improved Placement in Reading & Math

- Grades K-4 Reading improvement was stronger than Math
- Grade 5 approximately equal improvement in Reading and Math
- Grade 1 over 50% of all students improved at least 1 level in Reading

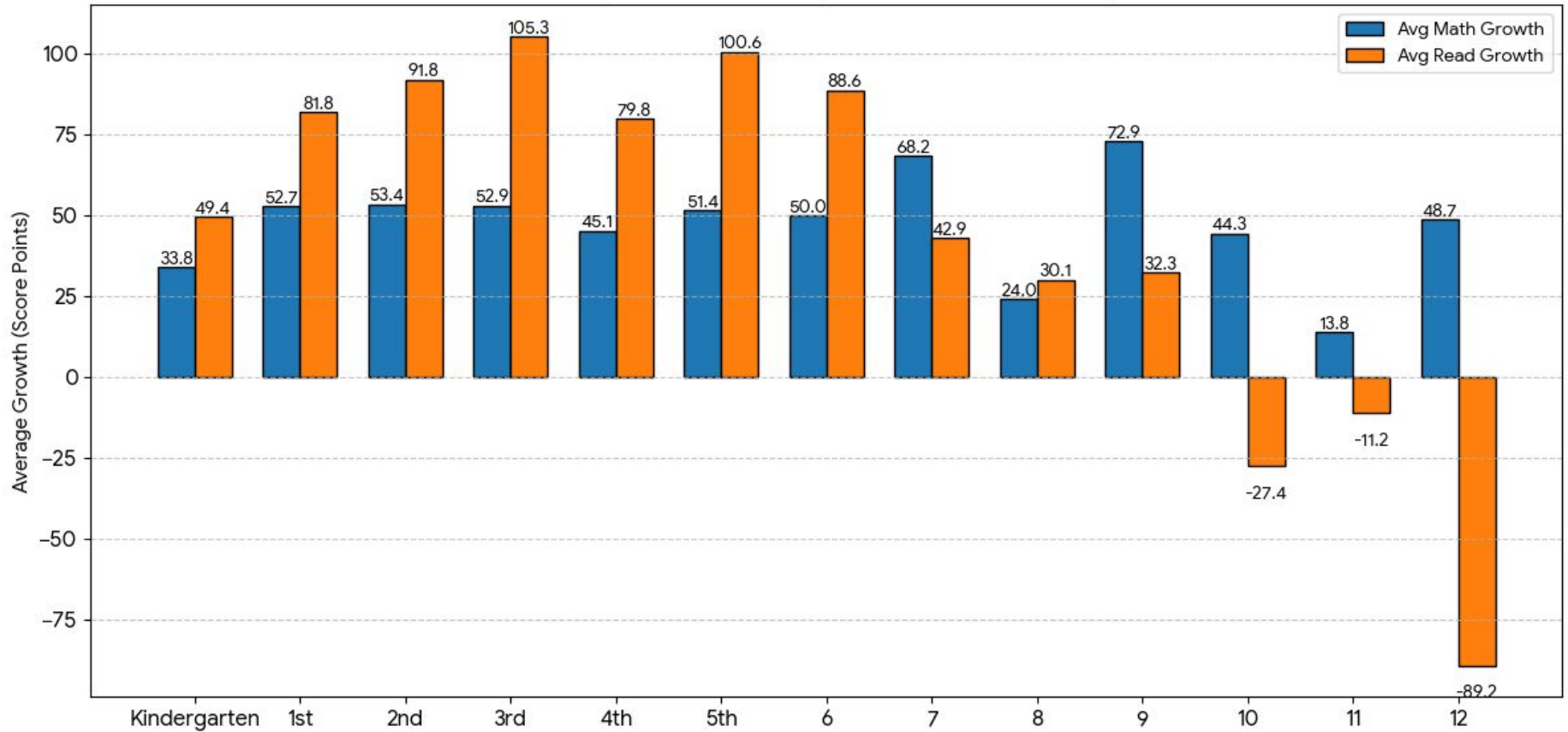
Grades 6-12 BOY to MOY Growth: % of Students Increasing Tiers



Secondary Improved Placement in Reading & Math

- Highest growth is 6th grade reading (32%) and 9th grade math (30%)
- Math growth outpaced reading growth in grades 7, 9, and 10.

Average Score Growth by Grade: Math vs Reading



Typical: at least 50 points; Ambitious: at least 75 points

- Grades K-6 average reading growth meets or exceeds typical growth
- Grades 1, 2, 3, 5, 6, 7, and 9 average math growth meets or exceeds typical growth
- Participation rates negatively impacted grades 10-12 reading

What's Next?



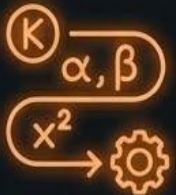
Deeper Analysis & Leadership

Deeper analysis with Leadership team focusing on subgroups and individual grade/class reports.



Identify Priority Growth Domains

Identify priority domains for growth and identify Tier 2 supports to address those specific areas.



K-Algebra II Math Curriculum

Continue the exploration of a consistent K-Algebra II math curriculum and the professional development for implementation.



Redefine Instructional Practices

Redefine the Core Instructional Practices in each content area to identify best practices and look fors.

Q & A



Meeting Date	Agenda Item	Category	Action	
January 27	Meeting Minutes Warrants Cafeteria report	SC Chair	Consent Agenda Vote	
	School Registration	Superintendent	Report	
	Personnel Report	Superintendent	Report	
	Enrollment Report	Superintendent	Report	
	SEEM Report	Superintendent	Report	
	Special Education Expense Report	F&F	Report	
	FY27 Budget Timeline	F&F	Vote	
	Rolling Agenda	SC Chair	Report	
	Data Presentations	SC Chair	Vote	
	Office Hours	SC Chair	Report	
	Outreach Reports	SC Chair	Report	
	Subcommittees	SC Chair	Report	
February 10	Meeting Minutes, Donations Warrants	SC Chair	Consent Agenda/Vote	
	Personnel Report	Superintendent	Report	
	School Registration Information	Superintendent	Report	
	Student Assessments (state and local) Aligned with Strategic Plan	Superintendent	Report	
	Monthly Budget Summary/Grants/Revl Accts	F&F	Vote	
	FY27 Budget Categories	F&F	Vote	
	Rolling Agenda	SC Chair	Report	
	Outreach Reports	SC Chair	Report	
February 24	Meeting Minutes, Donations, Warrants	SC Chair	Vote	
	Registration Updates	Superintendent	Report	
	Special Education Expense Report	F&F	Report	
	FY27 Superintendent Budget Update	F&F	Report	
	Fees Update and Planning	F&F	Discussion	
	Rolling Agenda	SC Chair	Report	
	Outreach reports	SC Chair	Report	

March 10	Meeting Minutes, Donations, Warrants	SC Chair	Vote
	Personnel Report	Superintendent	Report
	Pre-K and Kindergarten Enrollment Updates	Superintendent	Report
	Monthly Budget Summary/Grants/Revl Accts	F&F	Vote
	City and MPS Budget Overview	F&F	Informational review
	FY27 Fees	F&F	Discussion
	SOA Report	EP&P	Informational review
	Mid-year data	EP&P	Discussion
	Rolling Agenda	SC Chair	Report
	Outreach reports	SC Chair	Report
March 24	Meeting Minutes, Cafeteria Report, Donations, Warrants	SC Chair	Vote
	Pre-K and Kindergarten Enrollment Updates	Superintendent	Report
	FY27 Budget	F&F	Discussion
	Special Education Expense Report	F&F	Report
	Rolling Agenda	SC Chair	Report
	Outreach reports	SC Chair	Report
April 14	Meeting Minutes, Donations, Warrants	SC Chair	Vote
	Pre-K and Kindergarten Enrollment Updates	Superintendent	Report
	Personnel Report	Superintendent	Report
	Enrollment Report	Superintendent	Report
	FY27 Budget Hearing	F&F	n/a
	FY27 Budget Vote	F&F	Vote
	Rolling Agenda	SC Chair	Report
	Outreach reports	SC Chair	Report
April 28	Meeting Minutes, Donations, Warrants	SC Chair	Vote
	Student Assessments (state and local) Aligned with Strategic Plan	Superintendent	Report
	Pre-K and Kindergarten Enrollment Updates	Superintendent	Report

	Technology Plan	Superintendent	Report
	Special Education Expense Report	F&F	Report
	Monthly Budget Summary/Grants/Revl Accts	F&F	Vote
	Chartwells Update and FY27 Meal Prices	F&F	Vote
	Hold	EP&P	
	School Committee Subcommittees	P&P	Discussion
	Rolling Agenda	SC Chair	Report
	Outreach reports	SC Chair	Report
May 5	Meeting Minutes, Cafeteria Report, Donations, Warrants	SC Chair	Vote
	Pre-K and Kindergarten Enrollment Updates	Superintendent	Report
	Personnel Report	Superintendent	Report
	Monthly Budget Summary/Grants/Revl Accts	F&F	Vote
	Elementary Handbook	EP&P	Vote
	Program of Studies	EP&P	Report
	School Committee Subcommittees	P&P	Discussion
	Rolling Agenda	SC Chair	Report
	Outreach reports	SC Chair	Report
May 19	Meeting Minutes, Donations, Warrants	SC Chair	Vote
	Bridge Update	Superintendent	Report
	Special Education Expense Report	F&F	Report
	Summer DPW Building Plan	F&F	Report
	FY27 Enrollment Expectations	P&P	Report
	School Committee Subcommittees	P&P	Discussion
	Summer Plan: Remedial & Enrichment	EP&P	Report
	Curriculum Review Updates	EP&P	Report
	Superintendent Review	SC Chair	Report
	Rolling Agenda	SC Chair	Report
	Outreach reports	SC Chair	Report

June 9	Meeting Minutes; Cafeteria Report; Donations; Warrants	SC Chair	Report
	Personnel Report	Superintendent	Report
	Student Assessments (state and local) Aligned with Strategic Plan	Superintendent	Report
	End of Year Audit	F&F	Report
	Monthly Budget Summary/Grants/Revolving Accts.	F&F	Vote
	Special Education Expense Report	F&F	Report
	Update on End-of-Year Assessments	EP&P	Report
	Professional Development Plan	EP&P	Vote
	Site Councils Update	EP&P	Report
	Secondary Code of Conduct	EP&P	Vote
	Election of Student Representatives	SC Chair	Vote
	Supt. End of Cycle Evaluation: Report and Comments	SC Chair	Vote
	Rolling Agenda	SC Chair	Report
	Outreach reports	SC Chair	Report