



**City of Melrose**  
**Melrose School Committee**  
Regular Meeting

Tuesday, February 24, 2026, 7:00 PM  
562 Main Street, Melrose, MA 02176  
Council Chamber, First Floor, Melrose City Hall

**AGENDA**

**NOTE**

*Pursuant to Chapter 2 of the Acts of 2025, this meeting will be conducted via remote participation due to severe weather. No in-person attendance by members of the public will be permitted. Members of the public can access the meeting via [mmtv3.org](http://mmtv3.org) or local cable station MMTV (Comcast - Ch 3, 15, 22 or Verizon - Ch 37, 38, 39)*

To speak during Public Comment, use zoom link <https://cityofmelrose-org.zoom.us/my/specialmtg>  
Meeting ID: 382 229 5129 Passcode: 665001

**1. CALL TO ORDER/PLEDGE**

Margaret Raymond Driscoll	Member
Jen Grigoraitis	Mayor
Matt Hartman	Vice Chair
Melissa Holleran	Member
Seamus Kelley	Chair
Sheri Leo	Member
Jen Razi-Thomas	Member
Cari Berman	Interim Superintendent

**2. PUBLIC COMMENT**

**3. ANNOUNCEMENTS OF THE SUPERINTENDENT**

1. Report: Registration Updates
2. Report: NESDEC Enrollment Projection

**4. REPORT OF THE STUDENT REPRESENTATIVES**

**5. CONSENT AGENDA**

1. Warrants  
FY26 School - [S26060](#) - \$481,078.78

FY26 Refunds/Officials - [S26061](#) - \$10,880.15

2. Regular Meeting Minutes: February 10, 2026
3. Cafeteria Report
4. Data Presentations Estimated Timelines

## **6. SUBCOMMITTEES (COMMITTEE OF THE WHOLE)**

1. Finance and Facilities - Margaret Driscoll/Melissa Holleran
  - A Vote: Monthly Budget SummaryGrants
  - B Report: Special Education Update
  - C Report: Superintendent Budget Update
  - D Discussion: Fees Update and Planning
2. Policy and Planning - Matt Hartman/Margaret Driscoll
3. Educational Programs and Personnel - Jen Razi-Thomas/Sheri Leo

## **7. ANNOUNCEMENTS OF THE CHAIR**

1. Report: Rolling Agenda
2. Report: Outreach

## **8. EXECUTIVE SESSION**

1. To approve Executive Session meeting minutes from December 16, 2025 and January 13, 2026.
2. To discuss strategy with respect to collective bargaining with MEA Units A, B and C as an open discussion may have a detrimental effect of the negotiating position of the school committee.
3. To conduct strategy sessions in preparation for negotiations with non-union personnel Cari Berman.

## **9. ADJOURN**



*New England School Development Council*

**Melrose Public Schools  
Melrose, MA**

**School Year 2025-26 Enrollment Projection Report**

*Copyright, New England School Development Council, 2026*



# Table of Contents

Section	Page
Enrollment Summary.....	1
Historical Enrollment Table.....	2
Historical Enrollment Graph.....	3
Projected Enrollment Table.....	4
Projected Enrollment Graph.....	5
Historical & Projected Enrollment Graph.....	6
Historical & Projected Enrollment in Grade Combinations Line Graph.....	7
Historical & Projected Enrollment in Grade Combinations Stacked Column Graph.....	8
Birth to Kindergarten Relationship Graph.....	9
Additional Information .....	10
New England PK-12 Enrollment Trends.....	11
Projection Methodology and Reliability .....	12



## Enrollment Summary

NESDEC is pleased to send you this report displaying the past, present, and projected enrollments for your District. It is important to update enrollment projections every year to identify changes in enrollment patterns. Ten-year projections are designed to provide your District with yearly, up-to-date enrollment information that can be used by boards and administrators for effective planning and allocation of resources. We received the enrollment data from the District, and we assume that the method of collecting this data has been consistent from year to year.

Birth data informs Kindergarten enrollment. Each year, NESDEC secures birth data from State sources, providing a snapshot in time as to actual and provisional births as reported by the State, and then uses this birth data to predict Kindergarten enrollments. We only use annual birth data to assure consistency in reporting from year to year. Estimated births, which are an average of the previous five years of birth data, are based on this same snapshot. NESDEC acknowledges the variability of the provisional and the estimated birth data, and notes that the projected Kindergarten enrollments may serve as a guide to future planning.

Enrollment projections are more reliable in Years #1-3 in the future. Projections four to ten years out may serve as a guide to future enrollments and are useful for planning purposes. For more information, please refer to the Projection Methodology and Reliability section of this document.

The NESDEC enrollment projection fell within 11 students of the K-12 total, 3,562 students projected vs. 3,573 enrolled. A variance of 21 students occurred at Kindergarten, 264 projected vs. 243 enrolled. Ratios have been adjusted. Note: Ungraded students are not included in K-12 total.

Births decreased by 45 from a previous ten-year average of 360 to a projected average of 315. In most districts, Grades 1-8 are very stable in enrollments. However, there have been decreases in each of the 8 most recent years, leading to a net decrease averaging 25 students per year.

Over the next three years, Grades K-5 enrollments are projected to decrease by 174 students, Grades 6-8 enrollments are projected to decrease by 42 students, and Grades 9-12 enrollments are projected to increase by 15 students, as students move through the grades.



# Historical Enrollment

School District: Melrose, MA

1/6/2026

Historical Enrollment By Grade																			
Birth Year	Births*	School Year	PK	K	1	2	3	4	5	6	7	8	9	10	11	12	UNGR	K-12	PK-12
2010	331	2015-16	293	320	278	283	280	260	249	260	269	285	252	228	235	231	< 10 **	3432	3725
2011	313	2016-17	290	312	328	289	276	276	267	245	261	266	255	255	234	242	< 10 **	3508	3798
2012	359	2017-18	318	321	329	324	285	271	282	265	247	265	239	267	262	231	< 10 **	3591	3909
2013	337	2018-19	290	321	324	333	318	280	279	273	260	253	240	238	274	256	< 10 **	3655	3945
2014	380	2019-20	281	320	316	326	331	309	290	287	273	258	221	242	244	274	< 10 **	3696	3977
2015	377	2020-21	118	300	296	304	312	320	298	274	278	272	221	222	245	235	< 10 **	3583	3701
2016	385	2021-22	157	282	312	294	298	328	310	287	282	275	232	225	221	240	0	3586	3743
2017	381	2022-23	243	266	304	321	297	301	322	313	280	276	233	233	232	223	< 10 **	3606	3849
2018	382	2023-24	225	312	278	302	321	294	291	320	309	281	246	237	238	233	< 10 **	3667	3892
2019	358	2024-25	221	259	310	270	300	311	291	280	310	296	236	252	236	243	< 10 **	3595	3816
2020	355	2025-26	234	243	259	308	266	300	302	279	275	306	269	264	258	244	< 10 **	3577	3811

\*Birth data provided by Public Health Vital Records Departments in each state.

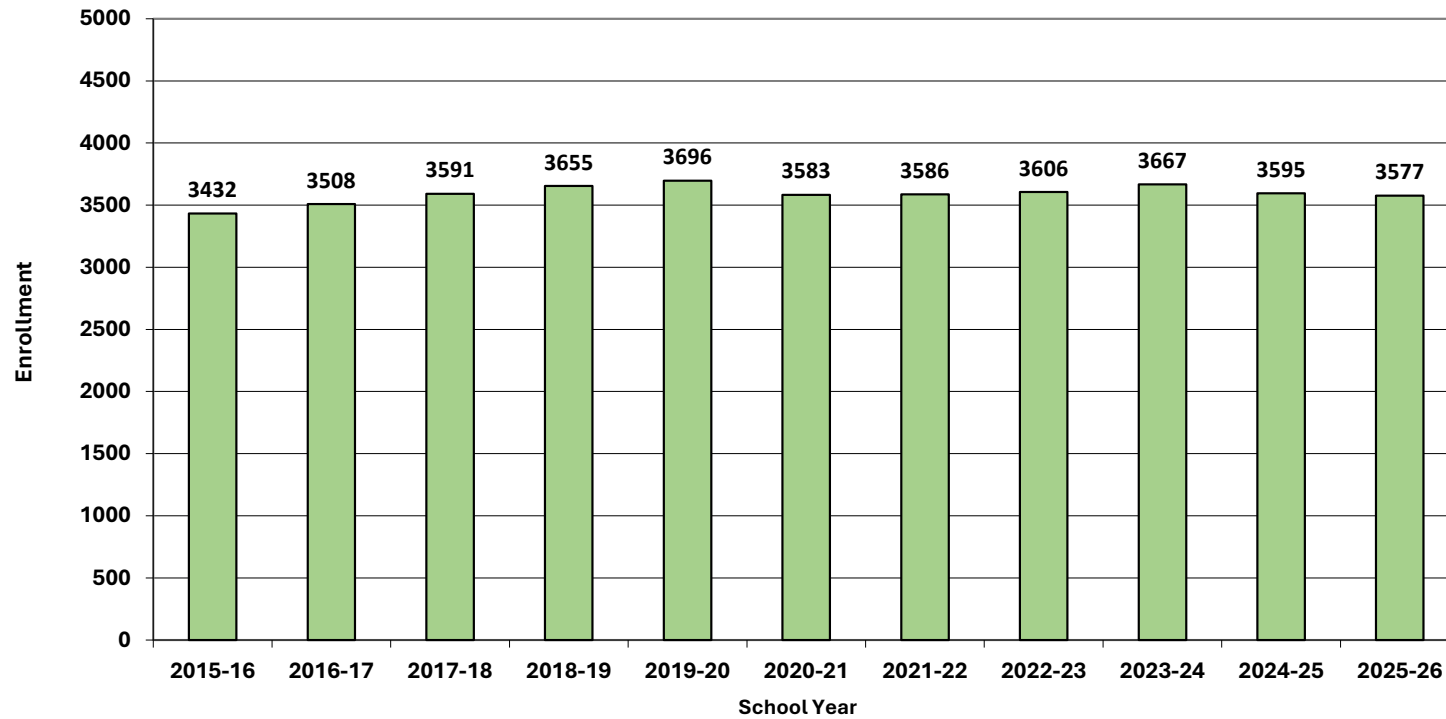
\*\* < 10 Not reported, to protect subgroups with fewer than 10 students.

Historical Enrollment in Grade Combinations										
School Year	PK-5	K-5	K-2	3-5	6-8	K-8	PK-8	7-8	6-12	9-12
2015-16	1963	1670	881	789	814	2484	2777	554	1760	946
2016-17	2038	1748	929	819	772	2520	2810	527	1758	986
2017-18	2130	1812	974	838	777	2589	2907	512	1776	999
2018-19	2145	1855	978	877	786	2641	2931	513	1794	1008
2019-20	2173	1892	962	930	818	2710	2991	531	1799	981
2020-21	1948	1830	900	930	824	2654	2772	550	1747	923
2021-22	1981	1824	888	936	844	2668	2825	557	1762	918
2022-23	2054	1811	891	920	869	2680	2923	556	1790	921
2023-24	2023	1798	892	906	910	2708	2933	590	1864	954
2024-25	1962	1741	839	902	886	2627	2848	606	1853	967
2025-26	1912	1678	810	868	860	2538	2772	581	1895	1035

Historical Percentage Changes			
School Year	K-12	Diff.	%
2015-16	3432		
2016-17	3508	76	2.2%
2017-18	3591	83	2.4%
2018-19	3655	64	1.8%
2019-20	3696	41	1.1%
2020-21	3583	-113	-3.1%
2021-22	3586	3	0.1%
2022-23	3606	20	0.6%
2023-24	3667	61	1.7%
2024-25	3595	-72	-2.0%
2025-26	3577	-18	-0.5%
<b>Change</b>	<b>145</b>	<b>4.2%</b>	



## Grades K-12 Historical Enrollment



©New England School Development Council · 508-481-9444 · [www.nesdec.org](http://www.nesdec.org)



# Projected Enrollment

School District: Melrose, MA

1/6/2026

Enrollment Projections By Grade*																				
Birth Year	Births*		School Year	PK	K	1	2	3	4	5	6	7	8	9	10	11	12	UNGR	K-12	PK-12
2020	355		2025-26	234	243	259	308	266	300	302	279	275	306	269	264	258	244	< 10 **	3577	3811
2021	333		2026-27	234	245	246	258	306	263	293	296	273	270	267	279	269	263	< 10 **	3532	3766
2022	325		2027-28	234	239	248	245	256	303	257	287	290	268	235	277	284	274	< 10 **	3467	3701
2023	303		2028-29	234	223	242	247	243	253	296	252	281	285	234	244	282	290	< 10 **	3376	3610
2024	287	(prov.)	2029-30	235	211	226	241	245	241	247	290	247	276	248	243	248	288	< 10 **	3255	3490
2025	321	(est.)	2030-31	235	236	214	225	239	243	235	242	284	243	241	257	247	253	< 10 **	3163	3398
2026	314	(est.)	2031-32	235	231	239	213	223	237	237	231	237	279	212	250	262	252	< 10 **	3107	3342
2027	310	(est.)	2032-33	235	228	234	238	211	221	231	233	226	233	243	220	255	267	< 10 **	3044	3279
2028	307	(est.)	2033-34	236	226	231	233	236	209	216	227	228	222	203	252	224	260	< 10 **	2971	3207
2029	308	(est.)	2034-35	236	226	229	230	231	234	204	212	222	224	194	210	257	228	< 10 **	2905	3141
2030	312	(est.)	2035-36	236	229	229	228	228	229	228	200	208	218	195	201	214	262	< 10 **	2873	3109

Note: Ungraded students (UNGR) often are high school students whose anticipated years of graduation are unknown, or students with special needs - UNGR not included in Grade Combinations for 7-12, 9-12, etc.

Based on an estimate of births

Based on children already born

Based on students already enrolled

\*Birth data provided by Public Health Vital Records Departments in each state.

\*\* < 10 Not reported, to protect subgroups with fewer than 10 students.

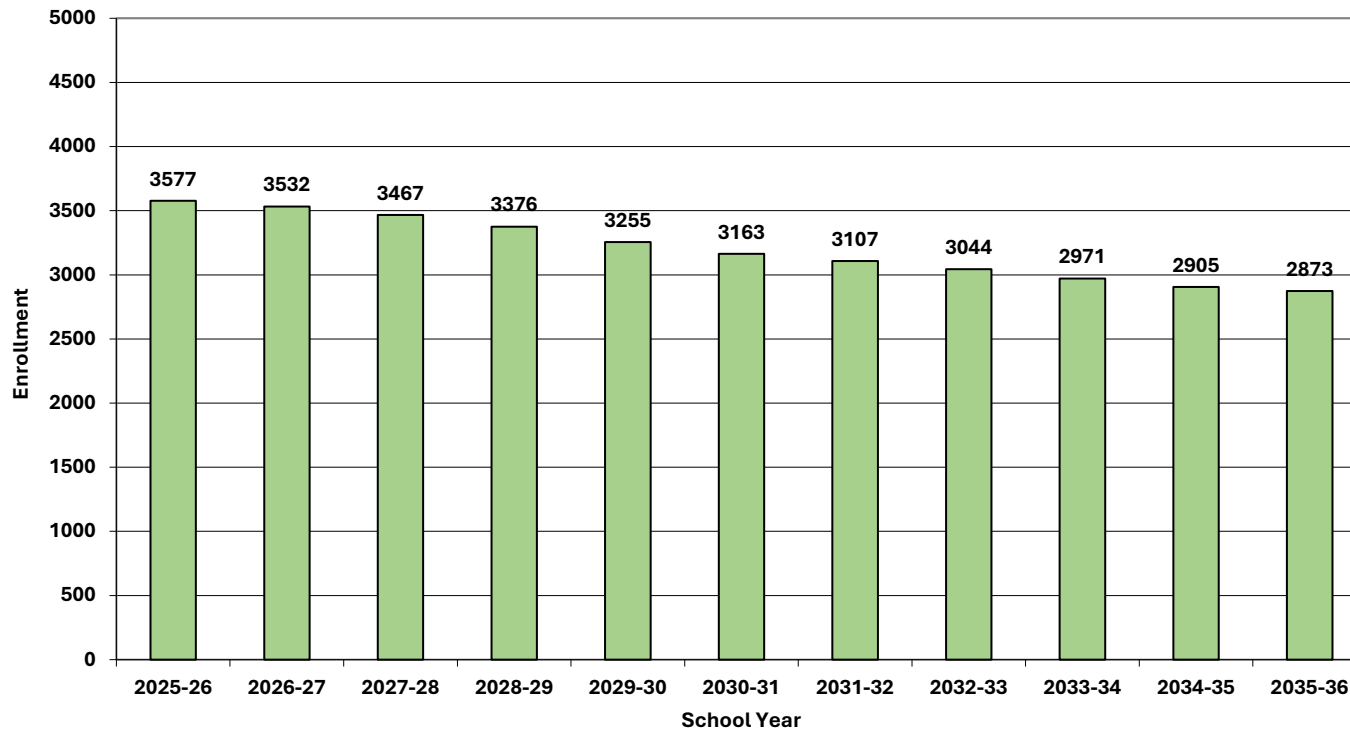
Projected Enrollment in Grade Combinations*										
School Year	PK-5	K-5	K-2	3-5	6-8	K-8	PK-8	7-8	6-12	9-12
2025-26	1912	1678	810	868	860	2538	2772	581	1895	1035
2026-27	1845	1611	749	862	839	2450	2684	543	1917	1078
2027-28	1782	1548	732	816	845	2393	2627	558	1915	1070
2028-29	1738	1504	712	792	818	2322	2556	566	1868	1050
2029-30	1646	1411	678	733	813	2224	2459	523	1840	1027
2030-31	1627	1392	675	717	769	2161	2396	527	1767	998
2031-32	1615	1380	683	697	747	2127	2362	516	1723	976
2032-33	1598	1363	700	663	692	2055	2290	459	1677	985
2033-34	1587	1351	690	661	677	2028	2264	450	1616	939
2034-35	1590	1354	685	669	658	2012	2248	446	1547	889
2035-36	1607	1371	686	685	626	1997	2233	426	1498	872

Projected Percentage Changes			
School Year	K-12	Diff.	%
2025-26	3577		
2026-27	3532	-45	-1.3%
2027-28	3467	-65	-1.8%
2028-29	3376	-91	-2.6%
2029-30	3255	-121	-3.6%
2030-31	3163	-92	-2.8%
2031-32	3107	-56	-1.8%
2032-33	3044	-63	-2.0%
2033-34	2971	-73	-2.4%
2034-35	2905	-66	-2.2%
2035-36	2873	-32	-1.1%
<b>Change</b>		<b>-704</b>	<b>-19.7%</b>

\*Projections should be updated annually to reflect changes in in/out-migration of families, births, and similar factors.

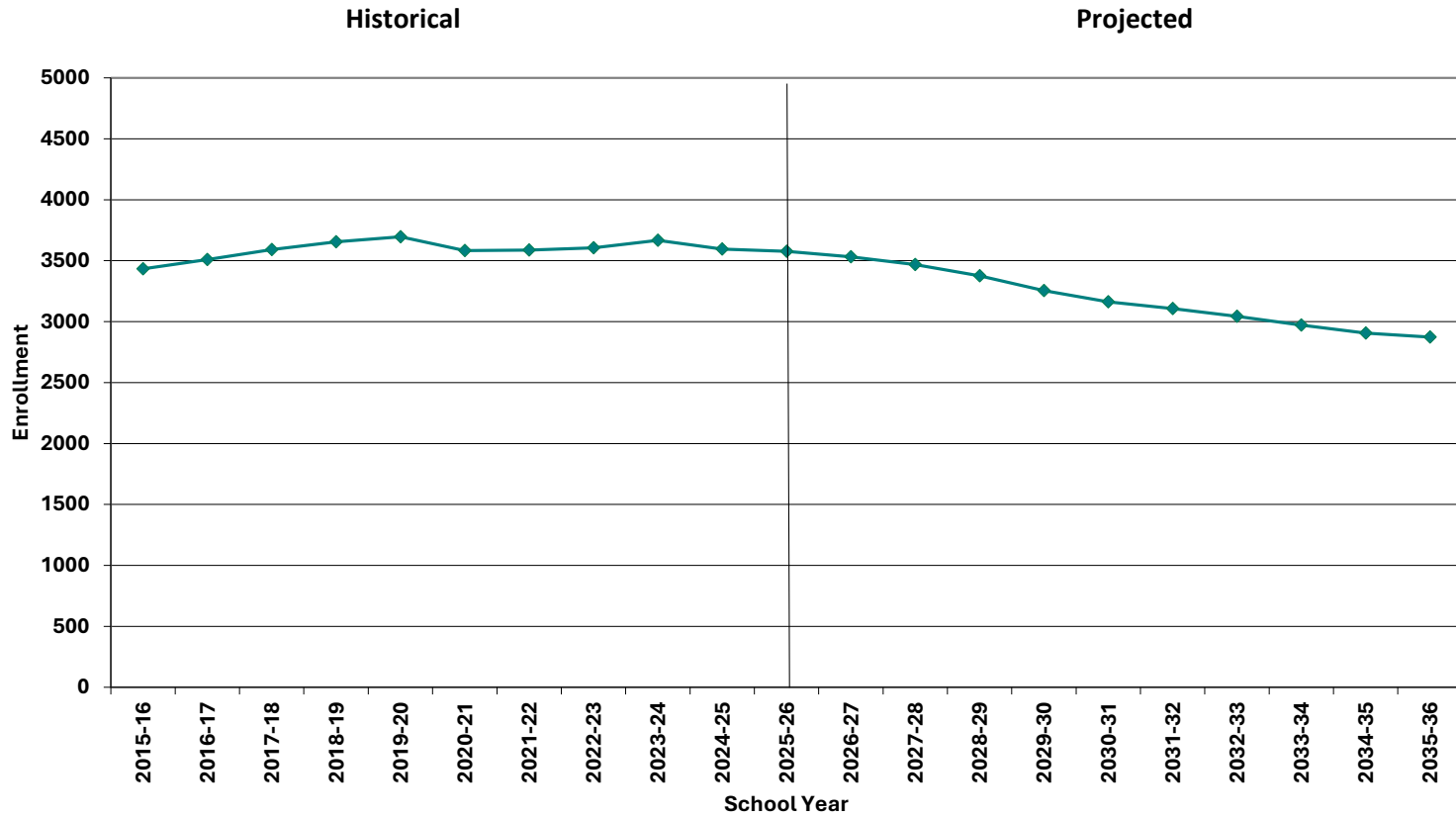


## Grades K-12 Projected Enrollment



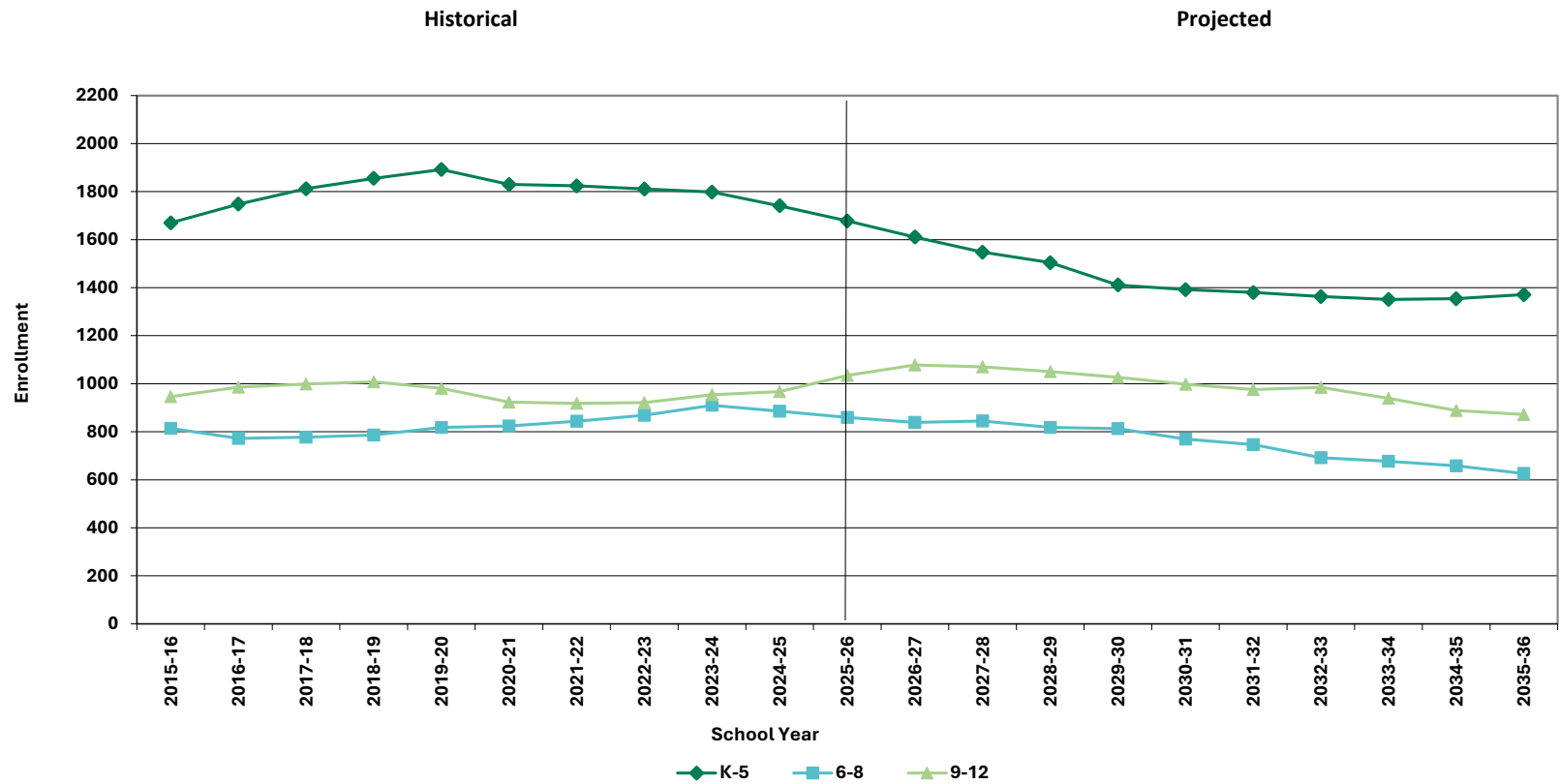


## Grades K-12 Historical & Projected Enrollment





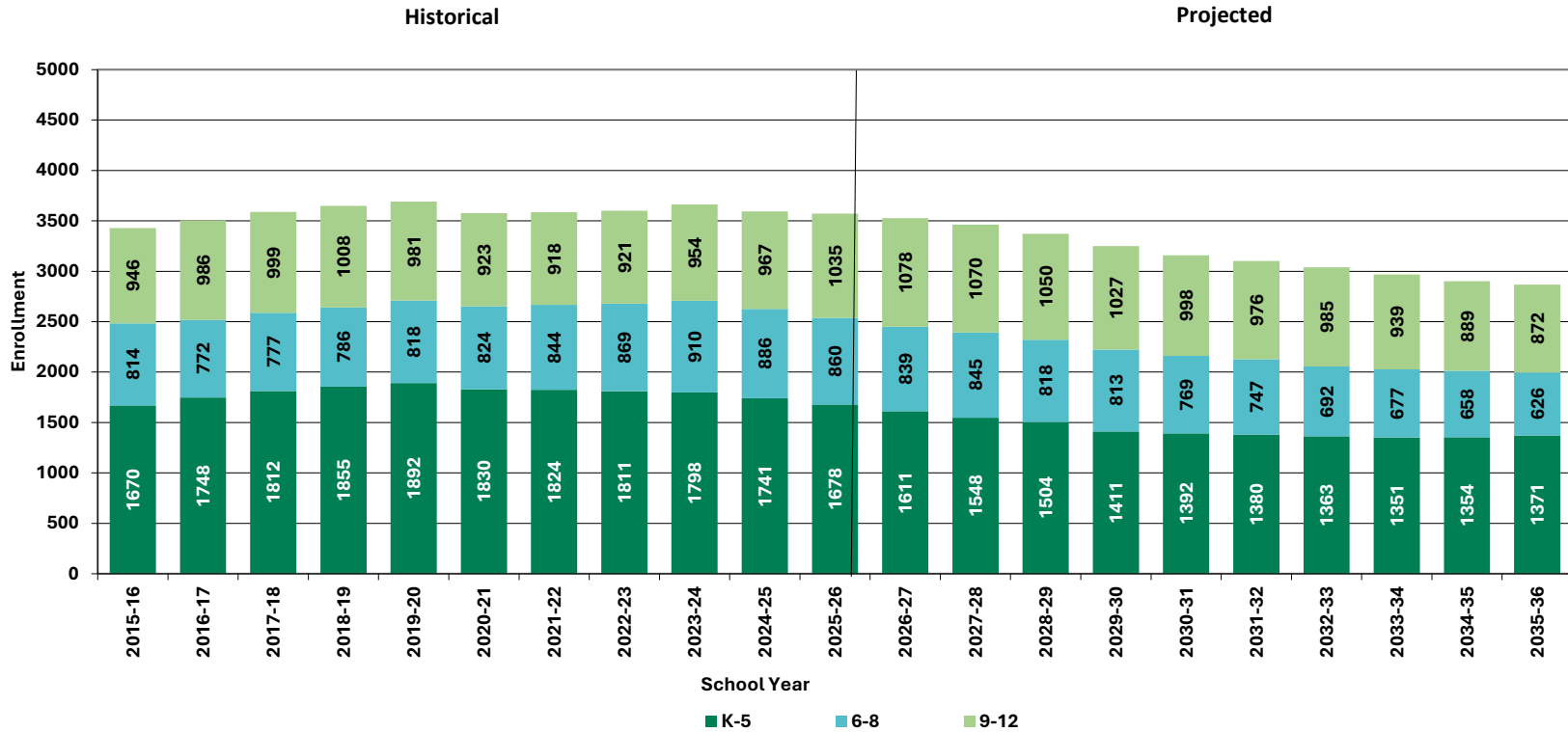
# Historical & Projected Enrollment in Grade Combinations



©New England School Development Council · 508-481-9444 · [www.nesdec.org](http://www.nesdec.org)

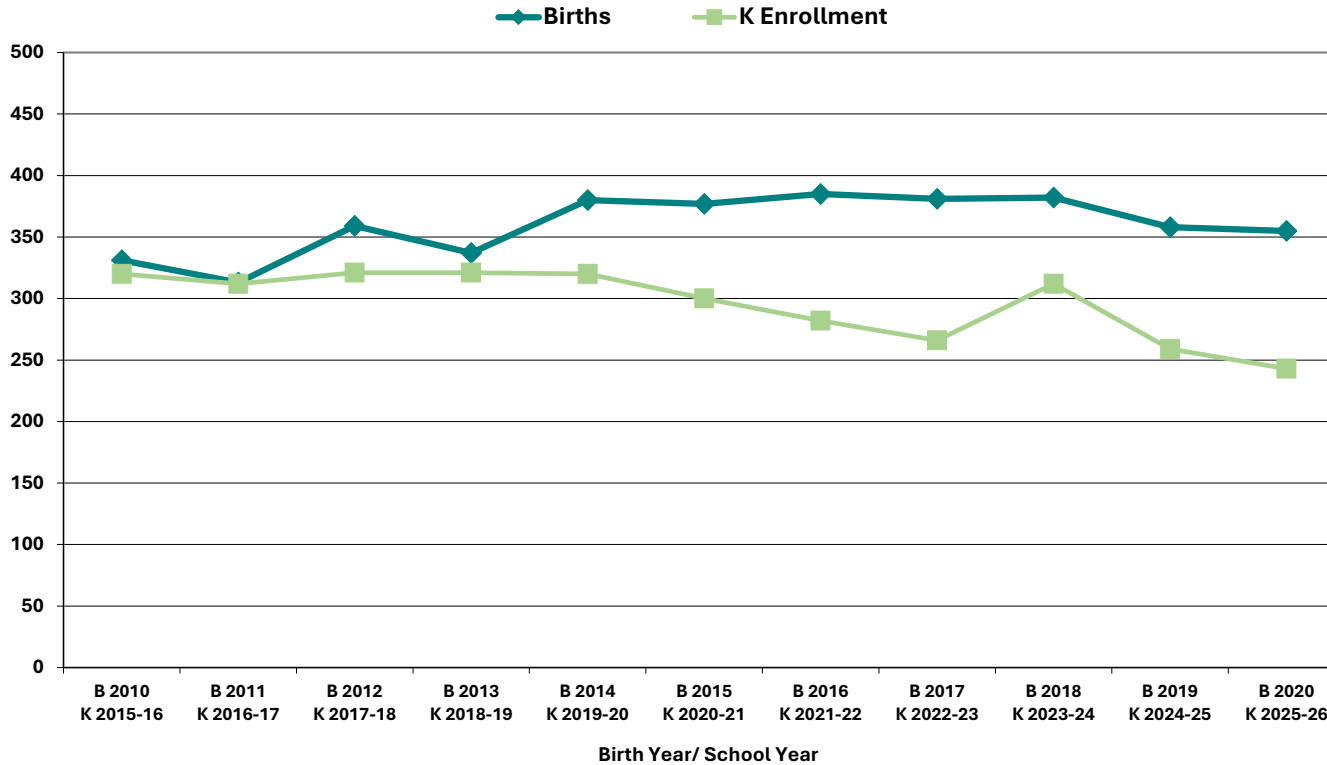


# Historical & Projected Enrollment in Grade Combinations





## Birth to Kindergarten Relationship



	B 2010 K 2015-16	B 2011 K 2016-17	B 2012 K 2017-18	B 2013 K 2018-19	B 2014 K 2019-20	B 2015 K 2020-21	B 2016 K 2021-22	B 2017 K 2022-23	B 2018 K 2023-24	B 2019 K 2024-25	B 2020 K 2025-26
<b>Births</b>	331	313	359	337	380	377	385	381	382	358	355
<b>Kindergarten</b>	320	312	321	321	320	300	282	266	312	259	243



## Additional Information

School Year	9-12 CTE	K-12 Non-Public	K-12 Choice-In	K-12 Choice-Out	K-12 Out District SPED	K-12 Homeschool
2021-22	n/a	n/a	n/a	n/a	n/a	n/a
2022-23	n/a	n/a	n/a	n/a	n/a	n/a
2023-24	n/a	n/a	n/a	n/a	n/a	n/a
2024-25	86	406	0	0	54	22
2025-26	n/a	n/a	n/a	n/a	66	22

\* Data provided by District.

"n/a" signifies that information was not provided by District.

\*\* < 10 Not reported, to protect subgroups with fewer than 10 students.



## New England's PK-12 Enrollments Trends

State	Fall 2013 PK - 12	Fall 2019 PK - 12	Fall 2022 PK - 12	Fall 2023 PK - 12	% Change 2013 - 23	% Change 2019-23	% Change 2022-23
<b>USA</b>	50,044,522	50,796,445	49,618,464	49,516,361	-1.1%	-2.5%	-0.2%
<b>CT</b>	546,200	523,690	513,513	512,652	-6.1%	-2.1%	-0.2%
<b>ME</b>	183,995	180,291	173,853	172,545	-6.2%	-4.3%	-0.8%
<b>MA</b>	955,739	959,394	923,349	914,958	-4.3%	-4.6%	-0.9%
<b>NH</b>	186,310	177,351	168,909	166,594	-10.6%	-6.1%	-1.4%
<b>RI</b>	142,008	143,557	137,449	136,154	-4.1%	-5.2%	-0.9%
<b>VT</b>	88,690	86,759	83,654	82,455	-7.0%	-5.0%	-1.4%

Source: U.S. Department of Education, National Center for Education Statistics, Enrollment in public elementary and secondary schools, by region, state, and jurisdiction: Selected years, fall 1990 through fall 2023, Table 203.20, Report Generated Oct. 2024, NESDEC 5.28.25

Although most New England Districts are seeing a decline in the number of births, NESDEC's experience indicates that the impact on enrollment varies from District to District. Almost half of New England Districts have been growing in PK-12 enrollment, and a similar number are declining (often in rural areas), with the other Districts remaining stable.

## PROJECTION METHODOLOGY

Cohort component (survival) technique is a frequently used method of preparing enrollment projections. NESDEC uses this method, but modifies it in order to move away from projections that are wholly computer- or formula-driven. Such modification permits the incorporation of important, current district-specific demographic information into the generation of enrollment projections (such as in/out-migration of students, resident births, etc.). Percentages are calculated from the historical enrollment data to determine a reliable percentage of increase or decrease in enrollment between any two grades. For example, if 100 students enrolled in Grade 1 in 2024-25 increased to 104 students in Grade 2 in 2025-26, the percentage of survival would be 104%, or a ratio of 1.04. Ratios are calculated between each pair of grades or years in school over several recent years.

After study and analysis of the historical ratios, and based upon a reasonable set of assumptions regarding births, migration rates, retention rates, etc., ratios most indicative of future growth patterns are determined for each pair of grades. The ratios thus selected are applied to the present enrollment statistics to project into future years. The ratios are the key factors in the reliability of the projections, assuming validity of the data at the starting point.

## RELIABILITY OF ENROLLMENT PROJECTIONS

Projections can serve as useful guides to school administrators for educational planning. Enrollment projections are more reliable in Years #1-3 in the future and less reliable in the “out-years.” Projections four to ten years out may serve as a guide to future enrollments and are useful for planning purposes, but they should be viewed as subject to change given the likelihood of potential shifts in underlying assumptions/trends, such as student migration, births as they relate to Kindergarten enrollment, and other factors.

Projections that are based upon **the children who already are in the district** (the current K-12 population only) will be the most reliable. The second level of reliability will be for those children already **born into the community but not yet old enough to be in school**. The least reliable category is the group for which an estimate must be made **to predict the number of births**, thereby adding additional uncertainty. See these three multi-colored groupings on the “Projected Enrollment” tab.

Annual updates allow for early identification of recent changes in historical trends. When the actual enrollment in a grade is significantly different (higher or lower) from the projected number, it is important (yet difficult) to determine whether this is a one-year aberration or whether a new trend may have begun. **In light of this possibility, NESDEC urges all school districts to have updated enrollment projections developed by NESDEC each October.** This service is available at no cost to affiliated school districts.

**PRELIMINARY CITY OF MELROSE WARRANT REPORT**

DATE: 02/24/2026  
WARRANT: S26060  
AMOUNT: 481,078.78

\_\_\_\_\_  
Kerriann Golden  
CFO/City Auditor

To the Accounting Office:  
The following named bills of the School Department amounting in the agreed to total above are hereby approved and you are requested to place them on a warrant payment.

Approved: \_\_\_\_\_

\_\_\_\_\_  
\_\_\_\_\_  
\_\_\_\_\_  
\_\_\_\_\_

PRELIMINARY CITY OF MELROSE WARRANT REPORT

Detail Invoice List

WARRANT: S26060 02/24/2026

CASH ACCOUNT: 00		104200		EASTERN VENDOR 1132							
VENDOR		REMIT	PO	TYPE	DUE DATE	INVOICE	AMOUNT	DOCUMENT	VOUCHER	CHECK	
20661	KING BRIAN TRANSPORTA	0002	265333	INV	02/24/2026	766		344832	470111		
	<b>ACCOUNT DETAIL</b>					<b>LINE AMOUNT</b>					
	1 1141400 53450 3300	SPED	IN TRAN			13,150.00					
							13,150.00				
						<b>CHECK TOTAL</b>	<b>13,150.00</b>				
18325	AMAZON CAPITAL SERVIC	0004	26396113	INV	02/24/2026	1Y74-R76Q-3VLX		344408	469675		
	<b>ACCOUNT DETAIL</b>					<b>LINE AMOUNT</b>					
	1 18082 55500 2410	HIGH SCH	LIBR BKS			403.42					
							403.42				
18325	AMAZON CAPITAL SERVIC	0004	26396113	INV	02/24/2026	1XR7-V73R-3QRF		344409	469677		
	<b>ACCOUNT DETAIL</b>					<b>LINE AMOUNT</b>					
	1 18082 55500 2410	HIGH SCH	LIBR BKS			72.04					
							72.04				
18325	AMAZON CAPITAL SERVIC	0004	26396113	INV	02/24/2026	1PR4-F646-CJ7F		344411	469678		
	<b>ACCOUNT DETAIL</b>					<b>LINE AMOUNT</b>					
	1 18082 55500 2410	HIGH SCH	LIBR BKS			16.92					
							16.92				
18325	AMAZON CAPITAL SERVIC	0004	26321039	INV	02/24/2026	1F6F-FWC3-7PFF		344413	469680		
	<b>ACCOUNT DETAIL</b>					<b>LINE AMOUNT</b>					
	1 1121116 55502 2410	MS LANG ARMS LAN MAT				46.59					
							46.59				
18325	AMAZON CAPITAL SERVIC	0004	26313011	INV	02/24/2026	1VWM-LWJW-G6HD		344416	469683		
	<b>ACCOUNT DETAIL</b>					<b>LINE AMOUNT</b>					
	1 1113350 55500 2415	HORACE MANN INS SUP				305.14					
							305.14				
18325	AMAZON CAPITAL SERVIC	0004	26318019	INV	02/24/2026	1H1K-YTXC-6WRL		344420	469687		
	<b>ACCOUNT DETAIL</b>					<b>LINE AMOUNT</b>					
	1 1118350 55500 2430	FRANKLIN	FN GEN SUP			74.69					
							74.69				
18325	AMAZON CAPITAL SERVIC	0004	26307066	INV	02/24/2026	1TKM-3QMV-9NYR		344471	469740		
	<b>ACCOUNT DETAIL</b>					<b>LINE AMOUNT</b>					
	1 18512 55500 6300	ED STAT	GEN SUPP			193.59					
							193.59				
18325	AMAZON CAPITAL SERVIC	0004	26317041	INV	02/24/2026	147V-7RFP-JYWP		344619	469891		
	<b>ACCOUNT DETAIL</b>					<b>LINE AMOUNT</b>					
	1 1117350 55500 2430	WINTHROP	WN GEN SUP			11.98					
							11.98				

PRELIMINARY CITY OF MELROSE WARRANT REPORT

Detail Invoice List

WARRANT: S26060 02/24/2026

CASH ACCOUNT: 00		104200		EASTERN VENDOR 1132							
VENDOR		REMIT	PO	TYPE	DUE DATE	INVOICE	AMOUNT	DOCUMENT	VOUCHER	CHECK	
18325	AMAZON CAPITAL SERVIC	0004	26307073	INV	02/24/2026	14VM-6P71-4T4C		344833	470112		
	<b>ACCOUNT DETAIL</b>					<b>LINE AMOUNT</b>					
	1 18512 55500 6300		ED STAT	GEN SUPP		24.86					
							24.86				
18325	AMAZON CAPITAL SERVIC	0004	26307071	INV	02/24/2026	1L3N-NW79-F439		344834	470113		
	<b>ACCOUNT DETAIL</b>					<b>LINE AMOUNT</b>					
	1 18512 55500 6300		ED STAT	GEN SUPP		55.09					
							55.09				
18325	AMAZON CAPITAL SERVIC	0004	26307072	INV	02/24/2026	1TKT-7VQV-1TCN		344835	470114		
	<b>ACCOUNT DETAIL</b>					<b>LINE AMOUNT</b>					
	1 18512 55500 6300		ED STAT	GEN SUPP		317.16					
							317.16				
18325	AMAZON CAPITAL SERVIC	0004	26301115	INV	02/24/2026	1PMJ-LVX9-4JTG		344839	470119		
	<b>ACCOUNT DETAIL</b>					<b>LINE AMOUNT</b>					
	1 12002 530000		SCHLUN EXPOTHER SUPP			359.68					
							359.68				
18325	AMAZON CAPITAL SERVIC	0004	26390009	INV	02/24/2026	1GY4-NMWC-MG4X		345013	470297		
	<b>ACCOUNT DETAIL</b>					<b>LINE AMOUNT</b>					
	1 1577265 55500 2430		SUP & MAT	SUP & MAT		61.56					
							61.56				
18325	AMAZON CAPITAL SERVIC	0004		CRM	02/24/2026	1LJR-MMXQ-377V		345014	470298		
	<b>ACCOUNT DETAIL</b>					<b>LINE AMOUNT</b>					
	1 1577265 55500 2430		SUP & MAT	SUP & MAT		-61.56					
							-61.56				
							<b>CHECK TOTAL</b>				
							<b>1,881.16</b>				
20317	SHEILA ANN BARRY	0000	26341087	INV	02/24/2026	MEL2605		344884	470164		
	<b>ACCOUNT DETAIL</b>					<b>LINE AMOUNT</b>					
	1 1141400 52400 2320		SPED	OTH COST		2,111.40					
							2,111.40				
							<b>CHECK TOTAL</b>				
							<b>2,111.40</b>				
24416	ANA BONIN	0000	26341134	INV	02/24/2026	1		344423	469690		
	<b>ACCOUNT DETAIL</b>					<b>LINE AMOUNT</b>					
	1 1475254 52400 2320		CONT SVC	ASSESS/TSE		629.00					
	2 1475254 52400 2720		CONT SVC	ASSESS/GUI		1,335.13					
	3 1475264 52400 2320		CONT SVC	CONTR SVCS		4,035.87					
							6,000.00				

PRELIMINARY CITY OF MELROSE WARRANT REPORT

Detail Invoice List

WARRANT: S26060 02/24/2026

CASH ACCOUNT: 00		104200		EASTERN VENDOR 1132							
VENDOR		REMIT	PO	TYPE	DUE DATE	INVOICE	AMOUNT	DOCUMENT	VOUCHER	CHECK	
						<b>CHECK TOTAL</b>	<b>6,000.00</b>				
102225	BRANDON RESIDENTIAL T	0000	26341046	INV	02/24/2026	27149		344885	470165		
	<b>ACCOUNT DETAIL</b>					<b>LINE AMOUNT</b>					
	1 1141400 53901 9300	SPED	NON-PUBLIC			8,472.97					
							8,472.97				
						<b>CHECK TOTAL</b>	<b>8,472.97</b>				
128180	CAPITAL LEASE GROUP L	0000	26335119	INV	02/24/2026	326021 - A		344876	470156		
	<b>ACCOUNT DETAIL</b>					<b>LINE AMOUNT</b>					
	1 1135700 53450 3510	ATHL	AT TRANS			2,397.00					
							2,397.00				
128180	CAPITAL LEASE GROUP L	0000	265317	INV	02/24/2026	326021 - N		344880	470160		
	<b>ACCOUNT DETAIL</b>					<b>LINE AMOUNT</b>					
	1 1141400 53450 3300	SPED	IN TRAN			5,887.00					
							5,887.00				
						<b>CHECK TOTAL</b>	<b>8,284.00</b>				
146800	COMPASS GROUP USA, IN	0001	26301036	INV	02/24/2026	X039760426		344621	469893		
	<b>ACCOUNT DETAIL</b>					<b>LINE AMOUNT</b>					
	1 12002 520000	SCHLUN	EXPPURCH SVCS			113,383.65					
							113,383.65				
						<b>CHECK TOTAL</b>	<b>113,383.65</b>				
17779	CJ'S TRANSPORTATION	0001	265323	INV	02/24/2026	202627-01		344425	469692		
	<b>ACCOUNT DETAIL</b>					<b>LINE AMOUNT</b>					
	1 1141400 53450 3300	SPED	IN TRAN			600.00					
							600.00				
						<b>CHECK TOTAL</b>	<b>600.00</b>				
11785	COMMONWEALTH OF MASSA	0001	265313	INV	02/24/2026	122262623		344836	470115		
	<b>ACCOUNT DETAIL</b>					<b>LINE AMOUNT</b>					
	1 1141400 53450 3300	SPED	IN TRAN			5.80					
							5.80				
						<b>CHECK TOTAL</b>	<b>5.80</b>				

PRELIMINARY CITY OF MELROSE WARRANT REPORT

Detail Invoice List

WARRANT: S26060 02/24/2026

CASH ACCOUNT: 00 104200		EASTERN VENDOR 1132									
VENDOR		REMIT	PO	TYPE	DUE DATE	INVOICE	AMOUNT	DOCUMENT	VOUCHER	CHECK	
23720	CONSTELLATIONS BEHAVI	0001	26307019	INV	02/24/2026	13135733		344883	470163		
	<b>ACCOUNT DETAIL</b>					<b>LINE AMOUNT</b>					
	1 18512 52400 6300		ED STAT	CONTR SVCS		750.00					
							750.00				
						<b>CHECK TOTAL</b>	<b>750.00</b>				
241600	EASTER SEALS MASSACHU	0000	26341142	INV	02/24/2026	112550		344886	470166		
	<b>ACCOUNT DETAIL</b>					<b>LINE AMOUNT</b>					
	1 1475264 52400 2320		CONT SVC	CONTR SVCS		2,520.00					
							2,520.00				
						<b>CHECK TOTAL</b>	<b>2,520.00</b>				
15751	EI US, LLC.	0001	26341088	INV	02/24/2026	INV295339		344887	470167		
	<b>ACCOUNT DETAIL</b>					<b>LINE AMOUNT</b>					
	1 1141400 52400 2320		SPED	OTH COST		1,296.00					
							1,296.00				
						<b>CHECK TOTAL</b>	<b>1,296.00</b>				
16937	ENERGY SOURCE LLC	0001	26301092	INV	02/24/2026	19-6492-2		344964	470246		
	<b>ACCOUNT DETAIL</b>					<b>LINE AMOUNT</b>					
	1 1727264 52400 4220		CONT SVC	FACILITIES		63,578.80					
							63,578.80				
						<b>CHECK TOTAL</b>	<b>63,578.80</b>				
15271	GLS ASSOCIATES, INC	0000	26335173	INV	02/24/2026	7039		344427	469695		
	<b>ACCOUNT DETAIL</b>					<b>LINE AMOUNT</b>					
	1 1135706 55500 3510		HOCKEY	HOCKEY BOY		3,225.00					
							3,225.00				
15271	GLS ASSOCIATES, INC	0000	26335186	INV	02/24/2026	7145		344620	469892		
	<b>ACCOUNT DETAIL</b>					<b>LINE AMOUNT</b>					
	1 1135706 55500 3510		HOCKEY	HOCKEY BOY		5,210.00					
							5,210.00				
						<b>CHECK TOTAL</b>	<b>8,435.00</b>				
12942	INTERNATIONAL TRANSLA	0000	26341086	INV	02/24/2026	INV-04581		344429	469696		
	<b>ACCOUNT DETAIL</b>					<b>LINE AMOUNT</b>					
	1 1141400 52400 2320		SPED	OTH COST		292.00					
							292.00				
							292.00				

PRELIMINARY CITY OF MELROSE WARRANT REPORT

Detail Invoice List

WARRANT: S26060 02/24/2026

CASH ACCOUNT: 00 104200		EASTERN VENDOR 1132								
VENDOR		REMIT	PO	TYPE	DUE DATE	INVOICE	AMOUNT	DOCUMENT	VOUCHER	CHECK
12942	INTERNATIONAL TRANSLA	0000	26396118	INV	02/24/2026	INV-04597		344431	469698	
	<b>ACCOUNT DETAIL</b>					<b>LINE AMOUNT</b>				
	1 1196000 52400 2110		CUR&PDEV	CR TRANS		308.75				
							308.75			
						<b>CHECK TOTAL</b>	<b>600.75</b>			
23807	BRIAN AND/OR MANDY LA	0000	26341041	INV	02/24/2026	26-27TUML		344888	470168	
	<b>ACCOUNT DETAIL</b>					<b>LINE AMOUNT</b>				
	1 1475264 52400 9300		CONT SVC	CONTR SVCS		27,000.00				
							27,000.00			
						<b>CHECK TOTAL</b>	<b>27,000.00</b>			
424800	LANDMARK SCHOOL OUTRE	0001	26341055	INV	02/24/2026	37091		344433	469700	
	<b>ACCOUNT DETAIL</b>					<b>LINE AMOUNT</b>				
	1 1475264 52400 9300		CONT SVC	CONTR SVCS		3,943.64				
							3,943.64			
424800	LANDMARK SCHOOL OUTRE	0001	26341054	INV	02/24/2026	39108		344435	469703	
	<b>ACCOUNT DETAIL</b>					<b>LINE AMOUNT</b>				
	1 1475264 52400 9300		CONT SVC	CONTR SVCS		1,971.82				
							1,971.82			
424800	LANDMARK SCHOOL OUTRE	0001	26341053	INV	02/24/2026	39739		344436	469704	
	<b>ACCOUNT DETAIL</b>					<b>LINE AMOUNT</b>				
	1 1475264 52400 9300		CONT SVC	CONTR SVCS		5,811.80				
							5,811.80			
424800	LANDMARK SCHOOL OUTRE	0001	26341052	INV	02/24/2026	39227		344437	469705	
	<b>ACCOUNT DETAIL</b>					<b>LINE AMOUNT</b>				
	1 1475264 52400 9300		CONT SVC	CONTR SVCS		7,043.11				
							7,043.11			
424800	LANDMARK SCHOOL OUTRE	0001	26341051	INV	02/24/2026	38536		344438	469706	
	<b>ACCOUNT DETAIL</b>					<b>LINE AMOUNT</b>				
	1 1475264 52400 9300		CONT SVC	CONTR SVCS		8,302.60				
							8,302.60			
424800	LANDMARK SCHOOL OUTRE	0001	26341050	INV	02/24/2026	37465		344441	469708	
	<b>ACCOUNT DETAIL</b>					<b>LINE AMOUNT</b>				
	1 1475264 52400 9300		CONT SVC	CONTR SVCS		7,887.47				
							7,887.47			

PRELIMINARY CITY OF MELROSE WARRANT REPORT

Detail Invoice List

WARRANT: S26060 02/24/2026

CASH ACCOUNT: 00 104200		EASTERN VENDOR 1132									
VENDOR		REMIT	PO	TYPE	DUE DATE	INVOICE	AMOUNT	DOCUMENT	VOUCHER	CHECK	
424800	LANDMARK SCHOOL OUTRE	0001	26341049	INV	02/24/2026	36961		344446	469714		
	<b>ACCOUNT DETAIL</b>					<b>LINE AMOUNT</b>					
	1 1475264 52400	9300	CONT SVC	CONTR SVCS		7,887.47					
							7,887.47				
424800	LANDMARK SCHOOL OUTRE	0001	26341048	INV	02/24/2026	38085		344448	469716		
	<b>ACCOUNT DETAIL</b>					<b>LINE AMOUNT</b>					
	1 1475264 52400	9300	CONT SVC	CONTR SVCS		8,302.60					
							8,302.60				
424800	LANDMARK SCHOOL OUTRE	0001	26341047	INV	02/24/2026	37133		344961	470241		
	<b>ACCOUNT DETAIL</b>					<b>LINE AMOUNT</b>					
	1 1475254 52400	9300	CONT SVC	NON PUBLIC		7,887.47					
							7,887.47				
							<b>CHECK TOTAL</b>				
							<b>59,037.98</b>				
15568	GINGER LAZARUS AND OR	0000	26341109	INV	02/24/2026	JANUARY2026		344449	469717		
	<b>ACCOUNT DETAIL</b>					<b>LINE AMOUNT</b>					
	1 1141400 53450	3300	SPED	IN TRAN		774.88					
							774.88				
							<b>CHECK TOTAL</b>				
							<b>774.88</b>				
455100	LOWELL HIGH SCHOOL	0001	26335169	INV	02/24/2026	2102026		344838	470117		
	<b>ACCOUNT DETAIL</b>					<b>LINE AMOUNT</b>					
	1 1135710 55500	3510	WRESTLING	WRESTLING		700.00					
							700.00				
							<b>CHECK TOTAL</b>				
							<b>700.00</b>				
810330	MACAVOY JOYCE & KOWAL	0000	26341075	INV	02/24/2026	2769		344889	470169		
	<b>ACCOUNT DETAIL</b>					<b>LINE AMOUNT</b>					
	1 1199000 53401	1430	SYS-WIDE	LEGAL SVCS		1,176.00					
							1,176.00				
							<b>CHECK TOTAL</b>				
							<b>1,176.00</b>				
24516	CARL MASTANDREA	0000	26331088	INV	02/24/2026	157		344837	470116		
	<b>ACCOUNT DETAIL</b>					<b>LINE AMOUNT</b>					
	1 1131000 55503	2420	H.S.	HS EQUIP/T		550.00					
							550.00				
							<b>CHECK TOTAL</b>				
							<b>550.00</b>				

PRELIMINARY CITY OF MELROSE WARRANT REPORT

Detail Invoice List

WARRANT: S26060 02/24/2026

CASH ACCOUNT: 00 104200		EASTERN VENDOR 1132									
VENDOR		REMIT	PO	TYPE	DUE DATE	INVOICE	AMOUNT	DOCUMENT	VOUCHER	CHECK	
526600	THE MCLEAN HOSPITAL I	0001	26341060	INV	02/24/2026	CINV00150802		344890	470170		
	<b>ACCOUNT DETAIL</b>					<b>LINE AMOUNT</b>					
	1 1141400 53901 9300	SPED	NON-PUBLIC			11,101.51					
							11,101.51				
526600	THE MCLEAN HOSPITAL I	0001	26341059	INV	02/24/2026	CINV00150803		344891	470171		
	<b>ACCOUNT DETAIL</b>					<b>LINE AMOUNT</b>					
	1 1141400 53901 9300	SPED	NON-PUBLIC			11,101.51					
							11,101.51				
							<b>CHECK TOTAL</b>				
							<b>22,203.02</b>				
542100	MELROSE SCHOOL FOOD S	0000	26307014	INV	02/24/2026	ES 2626		344892	470172		
	<b>ACCOUNT DETAIL</b>					<b>LINE AMOUNT</b>					
	1 18512 53000 6300	ED STAT	SNACKS			951.00					
							951.00				
542100	MELROSE SCHOOL FOOD S	0000	26307014	INV	02/24/2026	ES 2627		344893	470173		
	<b>ACCOUNT DETAIL</b>					<b>LINE AMOUNT</b>					
	1 18512 53000 6300	ED STAT	SNACKS			917.00					
							917.00				
542100	MELROSE SCHOOL FOOD S	0000	26307014	INV	02/24/2026	ES 2628		344894	470174		
	<b>ACCOUNT DETAIL</b>					<b>LINE AMOUNT</b>					
	1 18512 53000 6300	ED STAT	SNACKS			1,164.00					
							1,164.00				
542100	MELROSE SCHOOL FOOD S	0000	26307014	INV	02/24/2026	ES 2629		344895	470175		
	<b>ACCOUNT DETAIL</b>					<b>LINE AMOUNT</b>					
	1 18512 53000 6300	ED STAT	SNACKS			773.00					
							773.00				
542100	MELROSE SCHOOL FOOD S	0000	26307014	INV	02/24/2026	ES 2630		344896	470176		
	<b>ACCOUNT DETAIL</b>					<b>LINE AMOUNT</b>					
	1 18512 53000 6300	ED STAT	SNACKS			895.00					
							895.00				
542100	MELROSE SCHOOL FOOD S	0000	26396122	INV	02/24/2026	2604		344962	470242		
	<b>ACCOUNT DETAIL</b>					<b>LINE AMOUNT</b>					
	1 1498255 55500 2410	FY25SUPMAT	FY25SUPMAT			193.38					
	2 1498265 55500 2410	SUP/MATER	SUPP/MATER			8.62					
							202.00				
							<b>CHECK TOTAL</b>				
							<b>4,902.00</b>				

PRELIMINARY CITY OF MELROSE WARRANT REPORT

Detail Invoice List

WARRANT: S26060 02/24/2026

CASH ACCOUNT: 00 104200		EASTERN VENDOR 1132								
VENDOR		REMIT	PO	TYPE	DUE DATE	INVOICE	AMOUNT	DOCUMENT	VOUCHER	CHECK
24318	PAULA MURPHY	0000	26341079	INV	02/24/2026	FY26REIMBURSEMENT2		344897	470177	
	<b>ACCOUNT DETAIL</b>					<b>LINE AMOUNT</b>				
	1 1141400 53901 9300	SPED	NON-PUBLIC			3,406.25				
							3,406.25			
						<b>CHECK TOTAL</b>	<b>3,406.25</b>			
633500	NORTH SUBURBAN TRANSP	0000	26301119	INV	02/24/2026	1318		344678	469952	
	<b>ACCOUNT DETAIL</b>					<b>LINE AMOUNT</b>				
	1 19012 540000	ELEM MUSICOTH	CHGEXP			4,340.00				
							4,340.00			
						<b>CHECK TOTAL</b>	<b>4,340.00</b>			
679200	PERKINS SCHOOL FOR TH	0000	26341026	INV	02/24/2026	CI00008085		344898	470178	
	<b>ACCOUNT DETAIL</b>					<b>LINE AMOUNT</b>				
	1 1141400 53901 9300	SPED	NON-PUBLIC			12,286.92				
							12,286.92			
						<b>CHECK TOTAL</b>	<b>12,286.92</b>			
22448	PERSPECTIVES CHILDREN	0000	26341094	INV	02/24/2026	252617		344899	470179	
	<b>ACCOUNT DETAIL</b>					<b>LINE AMOUNT</b>				
	1 1141400 52400 2320	SPED	OTH COST			1,350.00				
							1,350.00			
						<b>CHECK TOTAL</b>	<b>1,350.00</b>			
21576	PRECISION HUMAN RESOU	0001	26341003	INV	02/24/2026	2100038382		344900	470180	
	<b>ACCOUNT DETAIL</b>					<b>LINE AMOUNT</b>				
	1 1141400 52400 2320	SPED	OTH COST			1,379.99				
							1,379.99			
						<b>CHECK TOTAL</b>	<b>1,379.99</b>			
757861	SCHOOL SPECIALTY, LLC	0003	26396104	INV	02/24/2026	308104833507		344622	469894	
	<b>ACCOUNT DETAIL</b>					<b>LINE AMOUNT</b>				
	1 1196000 55502 2410	CUR&PDEV	CR INS MAT			1,415.28				
							1,415.28			
757861	SCHOOL SPECIALTY, LLC	0003	26396104	INV	02/24/2026	308104833506		344623	469895	
	<b>ACCOUNT DETAIL</b>					<b>LINE AMOUNT</b>				
	1 1196000 55502 2410	CUR&PDEV	CR INS MAT			706.42				
							706.42			

PRELIMINARY CITY OF MELROSE WARRANT REPORT

Detail Invoice List

WARRANT: S26060 02/24/2026

CASH ACCOUNT: 00 104200		EASTERN VENDOR 1132									
VENDOR		REMIT	PO	TYPE	DUE DATE	INVOICE	AMOUNT	DOCUMENT	VOUCHER	CHECK	
757861	SCHOOL SPECIALTY, LLC	0003	26396104	INV	02/24/2026	308104833505		344624	469896		
	<b>ACCOUNT DETAIL</b>					<b>LINE AMOUNT</b>					
	1 1196000 55502 2410		CUR&PDEV	CR INS MAT		2,719.72					
							2,719.72				
757861	SCHOOL SPECIALTY, LLC	0003	26396104	INV	02/24/2026	208136663246		344625	469897		
	<b>ACCOUNT DETAIL</b>					<b>LINE AMOUNT</b>					
	1 1196000 55502 2410		CUR&PDEV	CR INS MAT		781.00					
							781.00				
757861	SCHOOL SPECIALTY, LLC	0003	26396104	INV	02/24/2026	308104833510		344626	469898		
	<b>ACCOUNT DETAIL</b>					<b>LINE AMOUNT</b>					
	1 1196000 55502 2410		CUR&PDEV	CR INS MAT		1,765.91					
							1,765.91				
757861	SCHOOL SPECIALTY, LLC	0003	26396104	INV	02/24/2026	308104833508		344627	469899		
	<b>ACCOUNT DETAIL</b>					<b>LINE AMOUNT</b>					
	1 1196000 55502 2410		CUR&PDEV	CR INS MAT		3,856.85					
							3,856.85				
757861	SCHOOL SPECIALTY, LLC	0003	26396104	INV	02/24/2026	208136663245		344628	469900		
	<b>ACCOUNT DETAIL</b>					<b>LINE AMOUNT</b>					
	1 1196000 55502 2410		CUR&PDEV	CR INS MAT		332.70					
							332.70				
757861	SCHOOL SPECIALTY, LLC	0003	26396104	INV	02/24/2026	308104833509		344629	469901		
	<b>ACCOUNT DETAIL</b>					<b>LINE AMOUNT</b>					
	1 1196000 55502 2410		CUR&PDEV	CR INS MAT		6,089.88					
							6,089.88				
757861	SCHOOL SPECIALTY, LLC	0003	26396104	INV	02/24/2026	208136679649		344630	469902		
	<b>ACCOUNT DETAIL</b>					<b>LINE AMOUNT</b>					
	1 1196000 55502 2410		CUR&PDEV	CR INS MAT		12.25					
							12.25				
757861	SCHOOL SPECIALTY, LLC	0003	26396104	INV	02/24/2026	208136697011		344631	469903		
	<b>ACCOUNT DETAIL</b>					<b>LINE AMOUNT</b>					
	1 1196000 55502 2410		CUR&PDEV	CR INS MAT		27.60					
							27.60				
757861	SCHOOL SPECIALTY, LLC	0003	26396104	INV	02/24/2026	208136696988		344632	469904		
	<b>ACCOUNT DETAIL</b>					<b>LINE AMOUNT</b>					
	1 1196000 55502 2410		CUR&PDEV	CR INS MAT		29.81					
							29.81				

PRELIMINARY CITY OF MELROSE WARRANT REPORT

Detail Invoice List

WARRANT: S26060 02/24/2026

CASH ACCOUNT: 00 104200		EASTERN VENDOR 1132								
VENDOR		REMIT	PO	TYPE	DUE DATE	INVOICE	AMOUNT	DOCUMENT	VOUCHER	CHECK
757861	SCHOOL SPECIALTY, LLC	0003	26396104	INV	02/24/2026	208136696823		344633	469905	
	<b>ACCOUNT DETAIL</b>					<b>LINE AMOUNT</b>				
	1 1196000 55502 2410		CUR&PDEV	CR INS MAT			13.64			
							13.64			
757861	SCHOOL SPECIALTY, LLC	0003	26396104	INV	02/24/2026	208136696987		344634	469906	
	<b>ACCOUNT DETAIL</b>					<b>LINE AMOUNT</b>				
	1 1196000 55502 2410		CUR&PDEV	CR INS MAT			27.67			
							27.67			
757861	SCHOOL SPECIALTY, LLC	0003	26396104	INV	02/24/2026	208136735395		344635	469907	
	<b>ACCOUNT DETAIL</b>					<b>LINE AMOUNT</b>				
	1 1196000 55502 2410		CUR&PDEV	CR INS MAT			4.09			
							4.09			
757861	SCHOOL SPECIALTY, LLC	0003	26396104	INV	02/24/2026	208136735378		344636	469908	
	<b>ACCOUNT DETAIL</b>					<b>LINE AMOUNT</b>				
	1 1196000 55502 2410		CUR&PDEV	CR INS MAT			53.68			
							53.68			
757861	SCHOOL SPECIALTY, LLC	0003	26396104	INV	02/24/2026	208136735377		344637	469909	
	<b>ACCOUNT DETAIL</b>					<b>LINE AMOUNT</b>				
	1 1196000 55502 2410		CUR&PDEV	CR INS MAT			53.68			
							53.68			
						<b>CHECK TOTAL</b>	<b>17,890.18</b>			
763600	SEEM COLLABORATIVE	0001	265300	INV	02/24/2026	T10027		344901	470181	
	<b>ACCOUNT DETAIL</b>					<b>LINE AMOUNT</b>				
	1 1141400 53450 3300		SPED	IN TRAN			8,809.74			
							8,809.74			
763600	SEEM COLLABORATIVE	0001	265300	INV	02/24/2026	T10028		344902	470182	
	<b>ACCOUNT DETAIL</b>					<b>LINE AMOUNT</b>				
	1 1141400 53450 3300		SPED	IN TRAN			78,345.38			
							78,345.38			
						<b>CHECK TOTAL</b>	<b>87,155.12</b>			
828585	TEKK INTERNATIONAL IN	0000	26307069	INV	02/24/2026	32243		344903	470183	
	<b>ACCOUNT DETAIL</b>					<b>LINE AMOUNT</b>				
	1 18512 55500 6300		ED STAT	GEN SUPP			1,653.00			
							1,653.00			
						<b>CHECK TOTAL</b>	<b>1,653.00</b>			

PRELIMINARY CITY OF MELROSE WARRANT REPORT

Detail Invoice List

WARRANT: S26060 02/24/2026

CASH ACCOUNT: 00		104200		EASTERN VENDOR 1132							
VENDOR		REMIT	PO	TYPE	DUE DATE	INVOICE	AMOUNT	DOCUMENT	VOUCHER	CHECK	
19359	TTF SOLUTIONS, LLC	0001	26341023	INV	02/24/2026	21372233		344904	470184		
	<b>ACCOUNT DETAIL</b>					<b>LINE AMOUNT</b>					
	1 1141400 52400 2320	SPED	OTH COST			810.00					
							810.00				
						<b>CHECK TOTAL</b>	<b>810.00</b>				
862424	UNIVERSITY OF MASSACH	0001	26301122	INV	02/24/2026	WSBC-26-0046		344980	470262		
	<b>ACCOUNT DETAIL</b>					<b>LINE AMOUNT</b>					
	1 16202 52400 3200	MEDICAID	CONTR SVCS			1,489.18					
							1,489.18				
						<b>CHECK TOTAL</b>	<b>1,489.18</b>				
18335	VOLLI COMMUNICATIONS	0000	26301018	INV	02/24/2026	83356		344450	469719		
	<b>ACCOUNT DETAIL</b>					<b>LINE AMOUNT</b>					
	1 1199000 53614 4130	SYS-WIDE	PHONE SW			749.12					
							749.12				
						<b>CHECK TOTAL</b>	<b>749.12</b>				
484680	WB MASON CO INC	0000	26301112	INV	02/24/2026	259810849		344451	469720		
	<b>ACCOUNT DETAIL</b>					<b>LINE AMOUNT</b>					
	1 1197000 54610 1420	ADMIN	PERS SUPP			29.37					
							29.37				
484680	WB MASON CO INC	0000	26301112	INV	02/24/2026	259842318		344638	469911		
	<b>ACCOUNT DETAIL</b>					<b>LINE AMOUNT</b>					
	1 1197000 54610 1420	ADMIN	PERS SUPP			4.99					
							4.99				
484680	WB MASON CO INC	0000	26314035	INV	02/24/2026	259874437		344639	469913		
	<b>ACCOUNT DETAIL</b>					<b>LINE AMOUNT</b>					
	1 1114350 55500 2430	LINCOLN	LN GEN SUP			1,121.25					
							1,121.25				
						<b>CHECK TOTAL</b>	<b>1,155.61</b>				
<b>83</b>	<b>INVOICES</b>					<b>WARRANT TOTAL</b>	<b>481,078.78</b>	<b>481,078.78</b>			

PRELIMINARY CITY OF MELROSE WARRANT REPORT

Preliminary Warrant Summary

WARRANT: S26060 02/24/2026

FUND	ORG	ACCOUNT	AMOUNT	AVLB BUDGET
0111	1113350	HORACE MANN ALL ELEME	0111-3-000-000-13-350-00-30-55500 -2415	HM INSTR SUPPLIES 305.14 5,397.34
0111	1114350	LINCOLN ALL ELEMENTAR	0111-3-000-000-14-350-00-30-55500 -2430	LN GENERAL SUPPLIES 1,121.25 16,954.68
0111	1117350	WINTHROP ALL ELEMENTA	0111-3-000-000-17-350-00-30-55500 -2430	WN GENERAL SUPPLIES 11.98 9,487.07
0111	1118350	FRANKLIN ALL ELEMENTA	0111-3-000-000-18-350-00-30-55500 -2430	FN GENERAL SUPPLIES 74.69 11,366.86
0111	1121116	M.S. LANGUAGE ARTS	0111-3-000-000-21-116-00-40-55502 -2410	MS LANG ARTS INSTR MA 46.59 28,364.13
0111	1131000	HIGH SCHOOL	0111-3-000-000-31-000-00-50-55503 -2420	HS INSTRUCTIONAL EQUI 550.00 75,328.86
0111	1135700	ATHLETICS	0111-3-000-000-35-700-00-50-53450 -3510	AT TRANSPORT 2,397.00 106,261.28
0111	1135706	ATHLETICS HOCKEY	0111-3-000-000-35-706-00-50-55500 -3510	AT ICE HOCKEY BOYS 8,435.00 106,261.28
0111	1135710	ATHLETICS WRESTLING	0111-3-000-000-35-710-00-50-55500 -3510	AT WRESTLING 700.00 106,261.28
0111	1141400	SPED	0111-3-000-000-41-400-00-00-52400 -2320	SP RELATED COSTS 7,239.39 1,090,046.77
0111	1141400	SPED	0111-3-000-000-41-400-00-00-53450 -3300	SP TRANSPORATION MPS 107,572.80 1,090,046.77
0111	1141400	SPED	0111-3-000-000-41-400-00-00-53901 -9300	SP TUITION NON-PUBLIC 46,369.16 1,090,046.77
0111	1196000	CURRICULUM & PROF DEV	0111-3-000-000-96-000-00-00-52400 -2110	CR TRANSLATION SERVIC 308.75 6,745.50
0111	1196000	CURRICULUM & PROF DEV	0111-3-000-000-96-000-00-00-55502 -2410	CR INSTR MATERIALS 17,890.18 63,888.91
0111	1197000	ADMIN	0111-3-000-000-97-000-00-00-54610 -1420	AD PERSONNEL OFFICE S 34.36 5,965.06
0111	1199000	SYSTEM-WIDE	0111-3-000-000-99-000-00-00-53401 -1430	SW LEGAL SERVICES 1,176.00 67,168.33
0111	1199000	SYSTEM-WIDE	0111-3-000-000-99-000-00-00-53614 -4130	SW TELEPHONE 749.12 67,168.33
			<b>FUND TOTAL</b>	<b>194,981.41</b>
1200	12002	SCHOOL LUNCH - EXP	1200-3-300-300-00-000-00-02-520000-	PURCHASED SERVICES 113,383.65 67,168.33
1200	12002	SCHOOL LUNCH - EXP	1200-3-300-300-00-000-00-02-530000-	OTHER SUPPLIES 359.68 67,168.33
			<b>FUND TOTAL</b>	<b>113,743.33</b>
1475	1475254	CONTRACT SERVICES	1475-3-025-005-41-000-20-05-52400 -2320	CONTRACT SERVICES ASS 629.00 0.00
1475	1475254	CONTRACT SERVICES	1475-3-025-005-41-000-20-05-52400 -2720	CONTRACT SERVICES ASS 1,335.13 0.00
1475	1475254	CONTRACT SERVICES	1475-3-025-005-41-000-20-05-52400 -9300	CONTRACT SERVICES NON 7,887.47 -162,115.88
1475	1475264	CONTRACT SERVICES	1475-3-026-005-41-000-20-05-52400 -2320	CONTRACT SERVICES ASS 6,555.87 17,964.13
1475	1475264	CONTRACT SERVICES	1475-3-026-005-41-000-20-05-52400 -9300	CONTRACT SERVICES NON 78,150.51 -73,744.52
			<b>FUND TOTAL</b>	<b>94,557.98</b>
1498	1498255	FY25 Title III SUPPLY	1498-3-025-300-96-000-20-05-55500 -2410	FY25 Title III SUPPLY 193.38 0.00
1498	1498265	FY26 Title III SUPPLY	1498-3-026-300-96-000-20-05-55500 -2410	FY26 Title III SUPPLY 8.62 643.89
			<b>FUND TOTAL</b>	<b>202.00</b>
1577	1577265	FY26 METCO SUPPLIES &	1577-3-026-006-90-000-22-05-55500 -2430	FY26 METCO SUPPLIES & 0.00 1,637.03

PRELIMINARY CITY OF MELROSE WARRANT REPORT

				<b>FUND TOTAL</b>	<b>0.00</b>	
1620	16202	MEDICAID	1620-3-000-000-00-000-29-02-52400 -3200	CONTRACT SERVICES	1,489.18	-8,086.46
				<b>FUND TOTAL</b>	<b>1,489.18</b>	
1727	1727264	FY26 FACILITIES EARMA	1727-3-026-300-00-000-23-02-52400 -4220	FY26 FACILITIES EARMA	63,578.80	111,421.20
				<b>FUND TOTAL</b>	<b>63,578.80</b>	
1808	18082	HIGH SCH - EXP	1808-3-000-000-00-000-29-02-55500 -2410	LIBRARY BOOKS	492.38	8,838.97
				<b>FUND TOTAL</b>	<b>492.38</b>	
1851	18512	ED STATIONS - EXPENSE	1851-3-300-300-00-00 -29-02-52400 -6300	CONTRACT SERVICES	750.00	2,512,151.93
1851	18512	ED STATIONS - EXPENSE	1851-3-300-300-00-00 -29-02-53000 -6300	SNACKS	4,700.00	2,512,151.93
1851	18512	ED STATIONS - EXPENSE	1851-3-300-300-00-00 -29-02-55500 -6300	GENERAL SUPPLY	2,243.70	2,512,151.93
				<b>FUND TOTAL</b>	<b>7,693.70</b>	
1901	19012	ELEMENTARY MUSIC FEES	1901-3-000-000-00-000-29-02-540000-	OTHER CHARGES AND EXP	4,340.00	355,670.15
				<b>FUND TOTAL</b>	<b>4,340.00</b>	
<b>WARRANT SUMMARY TOTAL</b>					<b>481,078.78</b>	
<b>GRAND TOTAL</b>					<b>481,078.78</b>	

PRELIMINARY CITY OF MELROSE WARRANT REPORT

Warrant List by Voucher

WARRANT: S26060 02/24/2026

VOUCHER	VENDOR	DOCUMENT	INVOICE	PO	TYPE	DUE DATE	AMOUNT	COMMENT
469675	18325 AMAZON CAPITAL SERVICES	344408	1Y74-R76Q-3VLX	26396113	INV	02/24/2026	403.42	MHS BOOKS FOR LIBRARY
469677	18325 AMAZON CAPITAL SERVICES	344409	1XR7-V73R-3QRF	26396113	INV	02/24/2026	72.04	MHS BOOKS FOR LIBRARY
469678	18325 AMAZON CAPITAL SERVICES	344411	1PR4-F646-CJ7F	26396113	INV	02/24/2026	16.92	MHS BOOKS FOR LIBRARY
469680	18325 AMAZON CAPITAL SERVICES	344413	1F6F-FWC3-7PFF	26321039	INV	02/24/2026	46.59	MVMS 8TH GRADE ENGLI
469683	18325 AMAZON CAPITAL SERVICES	344416	1VWM-LWJW-G6HD	26313011	INV	02/24/2026	305.14	HORACE MANN TONER & S
469687	18325 AMAZON CAPITAL SERVICES	344420	1H1K-YTXC-6WRL	26318019	INV	02/24/2026	74.69	FRANKLIN SUPPLIES / 1
469690	24416 ANA BONIN	344423	1	26341134	INV	02/24/2026	6,000.00	MELROSE PPS BILING EV
469692	17779 C.J'S TRANSPORTATION	344425	202627-01	265323	INV	02/24/2026	600.00	MELROSE STUDENT TRANS
469695	15271 GLS ASSOCIATES, INC	344427	7039	26335173	INV	02/24/2026	3,225.00	MELROSE HS 12 HRS DEC
469696	12942 INTERNATIONAL TRANSLATION	344429	INV-04581	26341086	INV	02/24/2026	292.00	MELROSE PPS INTERPRET
469698	12942 INTERNATIONAL TRANSLATION	344431	INV-04597	26396118	INV	02/24/2026	308.75	MELROSE TRANSLATION S
469700	424800 LANDMARK SCHOOL OUTREACH	344433	37091	26341055	INV	02/24/2026	3,943.64	MELROSE PPS SCHOOL TU
469703	424800 LANDMARK SCHOOL OUTREACH	344435	39108	26341054	INV	02/24/2026	1,971.82	MELROSE PPS SCHOOL TU
469704	424800 LANDMARK SCHOOL OUTREACH	344436	39739	26341053	INV	02/24/2026	5,811.80	MELROSE PPS SCHOOL TU
469705	424800 LANDMARK SCHOOL OUTREACH	344437	39227	26341052	INV	02/24/2026	7,043.11	MELROSE PPS SCHOOL TU
469706	424800 LANDMARK SCHOOL OUTREACH	344438	38536	26341051	INV	02/24/2026	8,302.60	MELROSE PPS SCHOOL TU
469708	424800 LANDMARK SCHOOL OUTREACH	344441	37465	26341050	INV	02/24/2026	7,887.47	MELROSE PPS SCHOOL TU
469714	424800 LANDMARK SCHOOL OUTREACH	344446	36961	26341049	INV	02/24/2026	7,887.47	MELROSE PPS SCHOOL TU
469716	424800 LANDMARK SCHOOL OUTREACH	344448	38085	26341048	INV	02/24/2026	8,302.60	MELROSE PPS SCHOOL TU
469717	15568 GINGER LAZARUS AND OR GAR	344449	JANUARY2026	26341109	INV	02/24/2026	774.88	JANUARY 2026 TRANSPOR
469719	18335 VOLLI COMMUNICATIONS INC	344450	83356	26301018	INV	02/24/2026	749.12	FY26 DISTRICT WIDE PH
469720	484680 WB MASON CO INC	344451	259810849	26301112	INV	02/24/2026	29.37	CENTRAL OFFICE SUPPLI
469740	18325 AMAZON CAPITAL SERVICES	344471	1TKM-3QMV-9NYR	26307066	INV	02/24/2026	193.59	FY26 ED STA OFFICE SU
469891	18325 AMAZON CAPITAL SERVICES	344619	147V-7RFP-JYWP	26317041	INV	02/24/2026	11.98	WINTHROP REACH CERTIF
469892	15271 GLS ASSOCIATES, INC	344620	7145	26335186	INV	02/24/2026	5,210.00	MELROSE HS 19 HRS JAN
469893	146800 COMPASS GROUP USA, INC.	344621	X039760426	26301036	INV	02/24/2026	113,383.65	FY26 MELROSE FOOD SER
469894	757861 SCHOOL SPECIALTY, LLC	344622	308104833507	26396104	INV	02/24/2026	1,415.28	SCIENCE MATERIALS LIN
469895	757861 SCHOOL SPECIALTY, LLC	344623	308104833506	26396104	INV	02/24/2026	706.42	SCIENCE MATERIALS FRA
469896	757861 SCHOOL SPECIALTY, LLC	344624	308104833505	26396104	INV	02/24/2026	2,719.72	SCIENCE MATERIALS HOO
469897	757861 SCHOOL SPECIALTY, LLC	344625	208136663246	26396104	INV	02/24/2026	781.00	SCIENCE MATERIALS ROO
469898	757861 SCHOOL SPECIALTY, LLC	344626	308104833510	26396104	INV	02/24/2026	1,765.91	SCIENCE MATERIALS ROO
469899	757861 SCHOOL SPECIALTY, LLC	344627	308104833508	26396104	INV	02/24/2026	3,856.85	SCIENCE MATERIALS HOR
469900	757861 SCHOOL SPECIALTY, LLC	344628	208136663245	26396104	INV	02/24/2026	332.70	SCIENCE MATERIALS WIN
469901	757861 SCHOOL SPECIALTY, LLC	344629	308104833509	26396104	INV	02/24/2026	6,089.88	SCIENCE MATERIALS WIN
469902	757861 SCHOOL SPECIALTY, LLC	344630	208136679649	26396104	INV	02/24/2026	12.25	SCIENCE MATERIALS WIN
469903	757861 SCHOOL SPECIALTY, LLC	344631	208136697011	26396104	INV	02/24/2026	27.60	SCIENCE MATERIALS FRA
469904	757861 SCHOOL SPECIALTY, LLC	344632	208136696988	26396104	INV	02/24/2026	29.81	SCIENCE MATERIALS HOO
469905	757861 SCHOOL SPECIALTY, LLC	344633	208136696823	26396104	INV	02/24/2026	13.64	SCIENCE MATERIALS ROO
469906	757861 SCHOOL SPECIALTY, LLC	344634	208136696987	26396104	INV	02/24/2026	27.67	SCIENCE MATERIALS WIN
469907	757861 SCHOOL SPECIALTY, LLC	344635	208136735395	26396104	INV	02/24/2026	4.09	SCIENCE MATERIALS FRA

Report generated: 02/19/2026 10:27:04  
 User: Kim Candilieri (kcandilieri)  
 Program ID: apwarrnt

PRELIMINARY CITY OF MELROSE WARRANT REPORT

Warrant List by Voucher

WARRANT: S26060 02/24/2026

VOUCHER	VENDOR	DOCUMENT	INVOICE	PO	TYPE	DUE DATE	AMOUNT	COMMENT
469908	757861 SCHOOL SPECIALTY, LLC	344636	208136735378	26396104	INV	02/24/2026	53.68	SCIENCE MATERIALS HOO
469909	757861 SCHOOL SPECIALTY, LLC	344637	208136735377	26396104	INV	02/24/2026	53.68	SCIENCE MATERIALS WIN
469911	484680 WB MASON CO INC	344638	259842318	26301112	INV	02/24/2026	4.99	CIRCLE STICKERS, WITE
469913	484680 WB MASON CO INC	344639	259874437	26314035	INV	02/24/2026	1,121.25	LINCOLN COPIER PAPER
469952	633500 NORTH SUBURBAN TRANSPORTA	344678	1318	26301119	INV	02/24/2026	4,340.00	MELROSE FIELD TRIP LE
470111	20661 KING BRIAN TRANSPORTATION	344832	766	265333	INV	02/24/2026	13,150.00	MELROSE STUDENT TRANS
470112	18325 AMAZON CAPITAL SERVICES	344833	14VM-6P71-4T4C	26307073	INV	02/24/2026	24.86	FY26 ED STA FEB VACA
470113	18325 AMAZON CAPITAL SERVICES	344834	1L3N-NW79-F439	26307071	INV	02/24/2026	55.09	FY26 ED STA OFFICE SU
470114	18325 AMAZON CAPITAL SERVICES	344835	1TKT-7VQV-1TCN	26307072	INV	02/24/2026	317.16	FY26 ED STA HOOVER SU
470115	11785 COMMONWEALTH OF MASSACHUSETTS	344836	122262623	265313	INV	02/24/2026	5.80	MELROSE / PLATE # 117
470116	24516 CARL MASTANDREA	344837	157	26331088	INV	02/24/2026	550.00	MELROSE HS DARKROOM M
470117	455100 LOWELL HIGH SCHOOL	344838	2102026	26335169	INV	02/24/2026	700.00	MELROSE WRESTLING 202
470119	18325 AMAZON CAPITAL SERVICES	344839	1PMJ-LVX9-4JTG	26301115	INV	02/24/2026	359.68	FY26 FOOD SERVICE SUP
470156	128180 CAPITAL LEASE GROUP LTD.	344876	326021 - A	26335119	INV	02/24/2026	2,397.00	FY26 MELROSE ATHLETIC
470160	128180 CAPITAL LEASE GROUP LTD.	344880	326021 - N	265317	INV	02/24/2026	5,887.00	MELROSE 7 VANS LEASE
470163	23720 CONSTELLATIONS BEHAVIORAL	344883	13135733	26307019	INV	02/24/2026	750.00	FY26 ED STA BEHAVIORA
470164	20317 SHEILA ANN BARRY	344884	MEL2605	26341087	INV	02/24/2026	2,111.40	MELROSE PPS READING C
470165	102225 BRANDON RESIDENTIAL TREAT	344885	27149	26341046	INV	02/24/2026	8,472.97	MELROSE PPS SCHOOL TU
470166	241600 EASTER SEALS MASSACHUSETT	344886	112550	26341142	INV	02/24/2026	2,520.00	MELROSE PPS OCC THERA
470167	15751 EI US, LLC.	344887	INV295339	26341088	INV	02/24/2026	1,296.00	MELROSE PPS VIRTUAL T
470168	23807 BRIAN AND/OR MANDY LADNER	344888	26-27TUML	26341041	INV	02/24/2026	27,000.00	SCHOOL TUITION REIMBU
470169	810330 MACAVOY JOYCE & KOWALSKI	344889	2769	26341075	INV	02/24/2026	1,176.00	MELROSE PPS CONTRACTE
470170	526600 THE MCLEAN HOSPITAL INC.	344890	CINV00150802	26341060	INV	02/24/2026	11,101.51	MELROSE PPS SCHOOL TU
470171	526600 THE MCLEAN HOSPITAL INC.	344891	CINV00150803	26341059	INV	02/24/2026	11,101.51	MELROSE PPS SCHOOL TU
470172	542100 MELROSE SCHOOL FOOD SERVI	344892	ES 2626	26307014	INV	02/24/2026	951.00	FY26 ED STA FRANKLIN
470173	542100 MELROSE SCHOOL FOOD SERVI	344893	ES 2627	26307014	INV	02/24/2026	917.00	FY26 ED STA WINTHROP
470174	542100 MELROSE SCHOOL FOOD SERVI	344894	ES 2628	26307014	INV	02/24/2026	1,164.00	FY26 ED STA HOOVER SN
470175	542100 MELROSE SCHOOL FOOD SERVI	344895	ES 2629	26307014	INV	02/24/2026	773.00	FY26 ED STA LINCOLN S
470176	542100 MELROSE SCHOOL FOOD SERVI	344896	ES 2630	26307014	INV	02/24/2026	895.00	FY26 ED STA HORACE MA
470177	24318 PAULA MURPHY	344897	FY26REIMBURSEMENT2	26341079	INV	02/24/2026	3,406.25	FY26 REIMBURSEMENT FI
470178	679200 PERKINS SCHOOL FOR THE BL	344898	CI00008085	26341026	INV	02/24/2026	12,286.92	MELROSE PPS SCHOOL TU
470179	22448 PERSPECTIVES CHILDREN'S T	344899	252617	26341094	INV	02/24/2026	1,350.00	MELROSE PPS SPEECH &
470180	21576 PRECISION HUMAN RESOURCE	344900	2100038382	26341003	INV	02/24/2026	1,379.99	MELROSE PPS TEACH ASS
470181	763600 SEEM COLLABORATIVE	344901	T10027	265300	INV	02/24/2026	8,809.74	MELROSE SPED IN DISTR
470182	763600 SEEM COLLABORATIVE	344902	T10028	265300	INV	02/24/2026	78,345.38	MELROSE SPED OUT OF D
470183	828585 TEKK INTERNATIONAL INC.	344903	32243	26307069	INV	02/24/2026	1,653.00	NEW DISTRICT WALKIE T
470184	19359 TTF SOLUTIONS, LLC	344904	21372233	26341023	INV	02/24/2026	810.00	MELROSE PPS SCHOOL PA
470241	424800 LANDMARK SCHOOL OUTREACH	344961	37133	26341047	INV	02/24/2026	7,887.47	MELROSE PPS SCHOOL TU
470242	542100 MELROSE SCHOOL FOOD SERVI	344962	2604	26396122	INV	02/24/2026	202.00	SNACKS LINCOLN ELL AF
470246	16937 ENERGY SOURCE LLC	344964	19-6492-2	26301092	INV	02/24/2026	63,578.80	MELROSE ENERGY SOURCE

Report generated: 02/19/2026 10:27:04  
 User: Kim Candilieri (kcandilieri)  
 Program ID: apwarrnt

PRELIMINARY CITY OF MELROSE WARRANT REPORT

Warrant List by Voucher

WARRANT: S26060 02/24/2026

VOUCHER	VENDOR	DOCUMENT	INVOICE	PO	TYPE	DUE DATE	AMOUNT	COMMENT
470262	862424 UNIVERSITY OF MASSACHUSET	344980	WSBC-26-0046	26301122	INV	02/24/2026	1,489.18	FY25 Q4 AAC CLAIM FY
470297	18325 AMAZON CAPITAL SERVICES	345013	1GY4-NMWC-MG4X	26390009	INV	02/24/2026	61.56	BOOKS FOR TENACITY CH
470298	18325 AMAZON CAPITAL SERVICES	345014	1LJR-MMXQ-377V		CRM	02/24/2026	-61.56	CREDIT FOR BOOKS RETU
WARRANT TOTAL							481,078.78	

**PRELIMINARY CITY OF MELROSE WARRANT REPORT**

DATE: 02/24/2026  
WARRANT: S26061  
AMOUNT: 10,880.15

\_\_\_\_\_  
Kerriann Golden  
CFO/City Auditor

To the Accounting Office:  
The following named bills of the School Department amounting in the  
agreed to total above are hereby approved and you are requested to  
place them on a warrant payment.

Approved: \_\_\_\_\_

\_\_\_\_\_  
\_\_\_\_\_  
\_\_\_\_\_  
\_\_\_\_\_

PRELIMINARY CITY OF MELROSE WARRANT REPORT

Detail Invoice List

WARRANT: S26061 02/24/2026

CASH ACCOUNT: 00 104200		EASTERN VENDOR 1132								
VENDOR		REMIT	PO	TYPE	DUE DATE	INVOICE	AMOUNT	DOCUMENT	VOUCHER	CHECK
10850	THOMAS AITKEN	0000		INV	02/24/2026	2026-415		344648	469922	
	<b>ACCOUNT DETAIL</b>					<b>LINE AMOUNT</b>				
	1 1135701 55500 3510		ATH O/MIS	ATH OF/MIS		112.00				
							112.00			
						<b>CHECK TOTAL</b>	<b>112.00</b>			
68225	ROBERT BEDDIA	0000		INV	02/24/2026	2026-416		344650	469924	
	<b>ACCOUNT DETAIL</b>					<b>LINE AMOUNT</b>				
	1 1135701 55500 3510		ATH O/MIS	ATH OF/MIS		86.00				
							86.00			
						<b>CHECK TOTAL</b>	<b>86.00</b>			
76310	RAY BERNIER	0000		INV	02/24/2026	2026-417		344651	469926	
	<b>ACCOUNT DETAIL</b>					<b>LINE AMOUNT</b>				
	1 1135701 55500 3510		ATH O/MIS	ATH OF/MIS		78.00				
							78.00			
						<b>CHECK TOTAL</b>	<b>156.00</b>			
76310	RAY BERNIER	0000		INV	02/24/2026	2026-418		344654	469928	
	<b>ACCOUNT DETAIL</b>					<b>LINE AMOUNT</b>				
	1 1135701 55500 3510		ATH O/MIS	ATH OF/MIS		78.00				
							78.00			
						<b>CHECK TOTAL</b>	<b>156.00</b>			
24536	LUKE BLAESER	0000		INV	02/24/2026	2026-428		344840	470120	
	<b>ACCOUNT DETAIL</b>					<b>LINE AMOUNT</b>				
	1 1135701 55500 3510		ATH O/MIS	ATH OF/MIS		165.00				
							165.00			
						<b>CHECK TOTAL</b>	<b>165.00</b>			
97803	ERIC BOUCHER	0000		INV	02/24/2026	2026-362		344475	469744	
	<b>ACCOUNT DETAIL</b>					<b>LINE AMOUNT</b>				
	1 1135701 55500 3510		ATH O/MIS	ATH OF/MIS		639.50				
							639.50			
						<b>CHECK TOTAL</b>	<b>639.50</b>			
626010	LIANNE BRADLEY	0000		INV	02/24/2026	2026-363		344476	469745	
	<b>ACCOUNT DETAIL</b>					<b>LINE AMOUNT</b>				
	1 1135701 55500 3510		ATH O/MIS	ATH OF/MIS		93.00				
							93.00			
							93.00			

PRELIMINARY CITY OF MELROSE WARRANT REPORT

Detail Invoice List

WARRANT: S26061 02/24/2026

CASH ACCOUNT: 00		104200		EASTERN VENDOR 1132							
VENDOR		REMIT	PO	TYPE	DUE DATE	INVOICE	AMOUNT	DOCUMENT	VOUCHER	CHECK	
626010	LIANNE BRADLEY	0000		INV	02/24/2026	2026-364		344477	469746		
	<b>ACCOUNT DETAIL</b>					<b>LINE AMOUNT</b>					
	1 1135701 55500 3510		ATH O/MIS	ATH OF/MIS		101.00					
							101.00				
						<b>CHECK TOTAL</b>	<b>194.00</b>				
24537	JESSICA BRESNICK	0000		INV	02/24/2026	2026-367		344480	469749		
	<b>ACCOUNT DETAIL</b>					<b>LINE AMOUNT</b>					
	1 1135701 55500 3510		ATH O/MIS	ATH OF/MIS		110.00					
							110.00				
						<b>CHECK TOTAL</b>	<b>110.00</b>				
181250	MARLENA BRESNICK	0000		INV	02/24/2026	2026-368		344481	469750		
	<b>ACCOUNT DETAIL</b>					<b>LINE AMOUNT</b>					
	1 1135701 55500 3510		ATH O/MIS	ATH OF/MIS		165.00					
							165.00				
						<b>CHECK TOTAL</b>	<b>165.00</b>				
108600	THOMAS BROW	0000		INV	02/24/2026	2026-365		344478	469747		
	<b>ACCOUNT DETAIL</b>					<b>LINE AMOUNT</b>					
	1 1135701 55500 3510		ATH O/MIS	ATH OF/MIS		86.00					
							86.00				
						<b>CHECK TOTAL</b>	<b>86.00</b>				
17682	TYRONE BROWN	0000		INV	02/24/2026	2026-366		344479	469748		
	<b>ACCOUNT DETAIL</b>					<b>LINE AMOUNT</b>					
	1 1135701 55500 3510		ATH O/MIS	ATH OF/MIS		86.00					
							86.00				
						<b>CHECK TOTAL</b>	<b>86.00</b>				
17682	TYRONE BROWN	0000		INV	02/24/2026	2026-419		344656	469930		
	<b>ACCOUNT DETAIL</b>					<b>LINE AMOUNT</b>					
	1 1135701 55500 3510		ATH O/MIS	ATH OF/MIS		86.00					
							86.00				
						<b>CHECK TOTAL</b>	<b>172.00</b>				
112870	RICHARD BRUNO	0000		INV	02/24/2026	2026-429		344841	470121		
	<b>ACCOUNT DETAIL</b>					<b>LINE AMOUNT</b>					
	1 1135701 55500 3510		ATH O/MIS	ATH OF/MIS		104.00					
							104.00				
							104.00				

PRELIMINARY CITY OF MELROSE WARRANT REPORT

Detail Invoice List

WARRANT: S26061 02/24/2026

CASH ACCOUNT: 00		104200		EASTERN VENDOR 1132							
VENDOR	REMIT	PO	TYPE	DUE DATE	INVOICE	AMOUNT	DOCUMENT	VOUCHER	CHECK		
118750	KEN BUSHEY	0000	INV	02/24/2026	2026-430		344842	470122			
	ACCOUNT DETAIL				LINE AMOUNT						
	1	1135701	55500 3510	ATH O/MIS	ATH OF/MIS	104.00					
					CHECK TOTAL	104.00					
17367	CHRISTINE BYLER	0000	INV	02/24/2026	FY26REFUND		344998	470280			
	ACCOUNT DETAIL				LINE AMOUNT						
	1	12004	427000	SCHLUN-REVCHGS	SERV	34.85					
					CHECK TOTAL	34.85					
24539	GLENN CALDER	0000	INV	02/24/2026	2026-370		344483	469752			
	ACCOUNT DETAIL				LINE AMOUNT						
	1	1135701	55500 3510	ATH O/MIS	ATH OF/MIS	78.00					
					CHECK TOTAL	78.00					
10176	MICHAEL A CARROLL	0000	INV	02/24/2026	2026-420		344658	469932			
	ACCOUNT DETAIL				LINE AMOUNT						
	1	1135701	55500 3510	ATH O/MIS	ATH OF/MIS	86.00					
					CHECK TOTAL	86.00					
14241	PAUL CISTERNELLI	0000	INV	02/24/2026	2026-431		344843	470123			
	ACCOUNT DETAIL				LINE AMOUNT						
	1	1135701	55500 3510	ATH O/MIS	ATH OF/MIS	104.00					
					CHECK TOTAL	104.00					
24557	JENY COLLINS	0000	INV	02/24/2026	2026-371		344484	469753			
	ACCOUNT DETAIL				LINE AMOUNT						
	1	1135701	55500 3510	ATH O/MIS	ATH OF/MIS	112.00					
					CHECK TOTAL	112.00					

PRELIMINARY CITY OF MELROSE WARRANT REPORT

Detail Invoice List

WARRANT: S26061 02/24/2026

CASH ACCOUNT: 00		104200		EASTERN VENDOR 1132							
VENDOR		REMIT	PO	TYPE	DUE DATE	INVOICE	AMOUNT	DOCUMENT	VOUCHER	CHECK	
20269	MICHAEL CROSBY	0000		INV	02/24/2026	2026-432		344844	470124		
	<b>ACCOUNT DETAIL</b>					<b>LINE AMOUNT</b>					
	1 1135701 55500 3510		ATH O/MIS	ATH OF/MIS		78.00					
							78.00				
								344845	470125		
	<b>ACCOUNT DETAIL</b>					<b>LINE AMOUNT</b>					
	1 1135701 55500 3510		ATH O/MIS	ATH OF/MIS		78.00					
							78.00				
											<b>CHECK TOTAL</b>
							<b>156.00</b>				
204585	AMY D'ALESSANDRO	0000		INV	02/24/2026	2026-372		344486	469755		
	<b>ACCOUNT DETAIL</b>					<b>LINE AMOUNT</b>					
	1 1135701 55500 3510		ATH O/MIS	ATH OF/MIS		101.00					
							101.00				
											<b>CHECK TOTAL</b>
							<b>101.00</b>				
23718	KENNETH DANIELS	0000		INV	02/24/2026	2026-450		344922	470202		
	<b>ACCOUNT DETAIL</b>					<b>LINE AMOUNT</b>					
	1 1135701 55500 3510		ATH O/MIS	ATH OF/MIS		112.00					
							112.00				
											<b>CHECK TOTAL</b>
							<b>112.00</b>				
19982	LEONARD DAVID	0000		INV	02/24/2026	2026-451		344923	470203		
	<b>ACCOUNT DETAIL</b>					<b>LINE AMOUNT</b>					
	1 1135701 55500 3510		ATH O/MIS	ATH OF/MIS		117.00					
							117.00				
											<b>CHECK TOTAL</b>
							<b>117.00</b>				
22665	ANTONIO DEGIROLAMO	0000		INV	02/24/2026	2026-373		344487	469756		
	<b>ACCOUNT DETAIL</b>					<b>LINE AMOUNT</b>					
	1 1135701 55500 3510		ATH O/MIS	ATH OF/MIS		112.00					
							112.00				
											<b>CHECK TOTAL</b>
							<b>112.00</b>				
23409	JOHN DESKAVICH	0000		INV	02/24/2026	2026-452		344925	470205		
	<b>ACCOUNT DETAIL</b>					<b>LINE AMOUNT</b>					
	1 1135701 55500 3510		ATH O/MIS	ATH OF/MIS		78.00					
							78.00				
											<b>CHECK TOTAL</b>
							<b>78.00</b>				

PRELIMINARY CITY OF MELROSE WARRANT REPORT

Detail Invoice List

WARRANT: S26061 02/24/2026

CASH ACCOUNT: 00		104200		EASTERN VENDOR 1132							
VENDOR		REMIT	PO	TYPE	DUE DATE	INVOICE	AMOUNT	DOCUMENT	VOUCHER	CHECK	
23409	JOHN DESKAVICH	0000		INV	02/24/2026	2026-453		344926	470206		
	<b>ACCOUNT DETAIL</b>					<b>LINE AMOUNT</b>					
	1 1135701 55500 3510		ATH O/MIS	ATH OF/MIS		104.00					
							104.00				
						<b>CHECK TOTAL</b>	<b>182.00</b>				
21347	MICHAEL DEVLIN	0000		INV	02/24/2026	2026-374		344488	469757		
	<b>ACCOUNT DETAIL</b>					<b>LINE AMOUNT</b>					
	1 1135701 55500 3510		ATH O/MIS	ATH OF/MIS		112.00					
							112.00				
						<b>CHECK TOTAL</b>	<b>112.00</b>				
13150	STEVEN GLENN DILLINGH	0000		INV	02/24/2026	2026-375		344489	469758		
	<b>ACCOUNT DETAIL</b>					<b>LINE AMOUNT</b>					
	1 1135701 55500 3510		ATH O/MIS	ATH OF/MIS		118.30					
							118.30				
						<b>CHECK TOTAL</b>	<b>118.30</b>				
256940	DAVID ENGELSON	0000		INV	02/24/2026	2026-454		344928	470208		
	<b>ACCOUNT DETAIL</b>					<b>LINE AMOUNT</b>					
	1 1135701 55500 3510		ATH O/MIS	ATH OF/MIS		78.00					
							78.00				
						<b>CHECK TOTAL</b>	<b>78.00</b>				
22535	JOHN FARRELL	0000		INV	02/24/2026	2026-434		344846	470126		
	<b>ACCOUNT DETAIL</b>					<b>LINE AMOUNT</b>					
	1 1135701 55500 3510		ATH O/MIS	ATH OF/MIS		78.00					
							78.00				
						<b>CHECK TOTAL</b>	<b>78.00</b>				
24066	BRIAN FOGARTY	0000		INV	02/24/2026	2026-376		344490	469759		
	<b>ACCOUNT DETAIL</b>					<b>LINE AMOUNT</b>					
	1 1135701 55500 3510		ATH O/MIS	ATH OF/MIS		60.00					
							60.00				
24066	BRIAN FOGARTY	0000		INV	02/24/2026	2026-377		344492	469761		
	<b>ACCOUNT DETAIL</b>					<b>LINE AMOUNT</b>					
	1 1135701 55500 3510		ATH O/MIS	ATH OF/MIS		60.00					
							60.00				



PRELIMINARY CITY OF MELROSE WARRANT REPORT

Detail Invoice List

WARRANT: S26061 02/24/2026

CASH ACCOUNT: 00		104200		EASTERN VENDOR 1132							
VENDOR	REMIT	PO	TYPE	DUE DATE	INVOICE	AMOUNT	DOCUMENT	VOUCHER	CHECK		
24597	ALEXANDER FRANKEL	0000	INV	02/24/2026	2026-456		344931	470211			
	ACCOUNT DETAIL				LINE AMOUNT						
	1	1135701	55500	3510	ATH O/MIS	ATH OF/MIS				78.00	
					CHECK TOTAL		78.00			78.00	
24554	MATTHEW FROIO	0001	INV	02/24/2026	2026-386		344642	469916			
	ACCOUNT DETAIL				LINE AMOUNT						
	1	1135701	55500	3510	ATH O/MIS	ATH OF/MIS				639.50	
					CHECK TOTAL		639.50			639.50	
286186	JEREMY FULLER	0000	INV	02/24/2026	2026-435		344847	470128			
	ACCOUNT DETAIL				LINE AMOUNT						
	1	1135701	55500	3510	ATH O/MIS	ATH OF/MIS				104.00	
					CHECK TOTAL		104.00			104.00	
22503	ROBERT GAMBALE	0000	INV	02/24/2026	2026-457		344932	470212			
	ACCOUNT DETAIL				LINE AMOUNT						
	1	1135701	55500	3510	ATH O/MIS	ATH OF/MIS				78.00	
					CHECK TOTAL		78.00			78.00	
23656	RICHARD GAMBALE	0000	INV	02/24/2026	2026-388		344505	469775			
	ACCOUNT DETAIL				LINE AMOUNT						
	1	1135701	55500	3510	ATH O/MIS	ATH OF/MIS				78.00	
					CHECK TOTAL		78.00			78.00	
24593	MATTHEW GANGI	0000	INV	02/24/2026	2026-436		344848	470129			
	ACCOUNT DETAIL				LINE AMOUNT						
	1	1135701	55500	3510	ATH O/MIS	ATH OF/MIS				104.00	
					CHECK TOTAL		104.00			104.00	

PRELIMINARY CITY OF MELROSE WARRANT REPORT

Detail Invoice List

WARRANT: S26061 02/24/2026

CASH ACCOUNT: 00		104200		EASTERN VENDOR 1132							
VENDOR		REMIT	PO	TYPE	DUE DATE	INVOICE	AMOUNT	DOCUMENT	VOUCHER	CHECK	
289965	PETER GANGI	0000		INV	02/24/2026	2026-458		344933	470213		
	<b>ACCOUNT DETAIL</b>					<b>LINE AMOUNT</b>					
	1 1135701 55500 3510		ATH O/MIS	ATH OF/MIS		104.00					
							104.00				
						<b>CHECK TOTAL</b>	<b>104.00</b>				
24543	DAVID GARDNER	0000		INV	02/24/2026	2026-387		344504	469774		
	<b>ACCOUNT DETAIL</b>					<b>LINE AMOUNT</b>					
	1 1135701 55500 3510		ATH O/MIS	ATH OF/MIS		107.00					
							107.00				
						<b>CHECK TOTAL</b>	<b>107.00</b>				
358280	TIMOTHY HOOTON	0000		INV	02/24/2026	2026-421		344659	469933		
	<b>ACCOUNT DETAIL</b>					<b>LINE AMOUNT</b>					
	1 1135701 55500 3510		ATH O/MIS	ATH OF/MIS		86.00					
							86.00				
						<b>CHECK TOTAL</b>	<b>86.00</b>				
24598	KEVIN HULSE	0000		INV	02/24/2026	2026-459		344934	470214		
	<b>ACCOUNT DETAIL</b>					<b>LINE AMOUNT</b>					
	1 1135701 55500 3510		ATH O/MIS	ATH OF/MIS		112.00					
							112.00				
						<b>CHECK TOTAL</b>	<b>112.00</b>				
21813	ROBERT W. JELLEY	0000		INV	02/24/2026	2026-398		344529	469799		
	<b>ACCOUNT DETAIL</b>					<b>LINE AMOUNT</b>					
	1 1135701 55500 3510		ATH O/MIS	ATH OF/MIS		75.00					
							75.00				
21813	ROBERT W. JELLEY	0000		INV	02/24/2026	2026-400		344532	469802		
	<b>ACCOUNT DETAIL</b>					<b>LINE AMOUNT</b>					
	1 1135701 55500 3510		ATH O/MIS	ATH OF/MIS		60.00					
							60.00				
21813	ROBERT W. JELLEY	0000		INV	02/24/2026	2026-401		344533	469803		
	<b>ACCOUNT DETAIL</b>					<b>LINE AMOUNT</b>					
	1 1135701 55500 3510		ATH O/MIS	ATH OF/MIS		75.00					
							75.00				

PRELIMINARY CITY OF MELROSE WARRANT REPORT

Detail Invoice List

WARRANT: S26061 02/24/2026

CASH ACCOUNT: 00		104200		EASTERN VENDOR 1132							
VENDOR		REMIT	PO	TYPE	DUE DATE	INVOICE	AMOUNT	DOCUMENT	VOUCHER	CHECK	
21813	ROBERT W. JELLEY	0000		INV	02/24/2026	2026-402		344566	469836		
	<b>ACCOUNT DETAIL</b>					<b>LINE AMOUNT</b>					
	1 1135701 55500 3510		ATH O/MIS	ATH OF/MIS		60.00					
							60.00				
21813	ROBERT W. JELLEY	0000		INV	02/24/2026	2026-403		344567	469837		
	<b>ACCOUNT DETAIL</b>					<b>LINE AMOUNT</b>					
	1 1135701 55500 3510		ATH O/MIS	ATH OF/MIS		60.00					
							60.00				
21813	ROBERT W. JELLEY	0000		INV	02/24/2026	2026-404		344568	469838		
	<b>ACCOUNT DETAIL</b>					<b>LINE AMOUNT</b>					
	1 1135701 55500 3510		ATH O/MIS	ATH OF/MIS		75.00					
							75.00				
21813	ROBERT W. JELLEY	0000		INV	02/24/2026	2026-405		344569	469839		
	<b>ACCOUNT DETAIL</b>					<b>LINE AMOUNT</b>					
	1 1135701 55500 3510		ATH O/MIS	ATH OF/MIS		60.00					
							60.00				
21813	ROBERT W. JELLEY	0000		INV	02/24/2026	2026-406		344589	469861		
	<b>ACCOUNT DETAIL</b>					<b>LINE AMOUNT</b>					
	1 1135701 55500 3510		ATH O/MIS	ATH OF/MIS		100.00					
							100.00				
21813	ROBERT W. JELLEY	0000		INV	02/24/2026	2026-460		344935	470215		
	<b>ACCOUNT DETAIL</b>					<b>LINE AMOUNT</b>					
	1 1135701 55500 3510		ATH O/MIS	ATH OF/MIS		60.00					
							60.00				
21813	ROBERT W. JELLEY	0000		INV	02/24/2026	2026-461		344936	470216		
	<b>ACCOUNT DETAIL</b>					<b>LINE AMOUNT</b>					
	1 1135701 55500 3510		ATH O/MIS	ATH OF/MIS		60.00					
							60.00				
21813	ROBERT W. JELLEY	0000		INV	02/24/2026	2026-462		344937	470217		
	<b>ACCOUNT DETAIL</b>					<b>LINE AMOUNT</b>					
	1 1135701 55500 3510		ATH O/MIS	ATH OF/MIS		60.00					
							60.00				
21813	ROBERT W. JELLEY	0000		INV	02/24/2026	2026-463		344938	470218		
	<b>ACCOUNT DETAIL</b>					<b>LINE AMOUNT</b>					
	1 1135701 55500 3510		ATH O/MIS	ATH OF/MIS		60.00					
							60.00				

PRELIMINARY CITY OF MELROSE WARRANT REPORT

Detail Invoice List

WARRANT: S26061 02/24/2026

CASH ACCOUNT: 00 104200		EASTERN VENDOR 1132									
VENDOR		REMIT	PO	TYPE	DUE DATE	INVOICE	AMOUNT	DOCUMENT	VOUCHER	CHECK	
21813	ROBERT W. JELLEY	0000		INV	02/24/2026	2026-464		344939	470219		
	<b>ACCOUNT DETAIL</b>					<b>LINE AMOUNT</b>					
	1 1135701 55500 3510		ATH O/MIS	ATH OF/MIS		60.00					
							60.00				
21813	ROBERT W. JELLEY	0000		INV	02/24/2026	2026-465		344940	470220		
	<b>ACCOUNT DETAIL</b>					<b>LINE AMOUNT</b>					
	1 1135701 55500 3510		ATH O/MIS	ATH OF/MIS		60.00					
							60.00				
21813	ROBERT W. JELLEY	0000		INV	02/24/2026	2026-466		344941	470221		
	<b>ACCOUNT DETAIL</b>					<b>LINE AMOUNT</b>					
	1 1135701 55500 3510		ATH O/MIS	ATH OF/MIS		60.00					
							60.00				
21813	ROBERT W. JELLEY	0000		INV	02/24/2026	2026-467		344942	470222		
	<b>ACCOUNT DETAIL</b>					<b>LINE AMOUNT</b>					
	1 1135701 55500 3510		ATH O/MIS	ATH OF/MIS		60.00					
							60.00				
21813	ROBERT W. JELLEY	0000		INV	02/24/2026	2026-468		344943	470223		
	<b>ACCOUNT DETAIL</b>					<b>LINE AMOUNT</b>					
	1 1135701 55500 3510		ATH O/MIS	ATH OF/MIS		60.00					
							60.00				
21813	ROBERT W. JELLEY	0000		INV	02/24/2026	2026-469		344944	470224		
	<b>ACCOUNT DETAIL</b>					<b>LINE AMOUNT</b>					
	1 1135701 55500 3510		ATH O/MIS	ATH OF/MIS		60.00					
							60.00				
21813	ROBERT W. JELLEY	0000		INV	02/24/2026	2026-470		344945	470225		
	<b>ACCOUNT DETAIL</b>					<b>LINE AMOUNT</b>					
	1 1135701 55500 3510		ATH O/MIS	ATH OF/MIS		60.00					
							60.00				
21813	ROBERT W. JELLEY	0000		INV	02/24/2026	2026-471		344946	470226		
	<b>ACCOUNT DETAIL</b>					<b>LINE AMOUNT</b>					
	1 1135701 55500 3510		ATH O/MIS	ATH OF/MIS		60.00					
							60.00				
21813	ROBERT W. JELLEY	0000		INV	02/24/2026	2026-472		344947	470227		
	<b>ACCOUNT DETAIL</b>					<b>LINE AMOUNT</b>					
	1 1135701 55500 3510		ATH O/MIS	ATH OF/MIS		60.00					
							60.00				

PRELIMINARY CITY OF MELROSE WARRANT REPORT

Detail Invoice List

WARRANT: S26061 02/24/2026

CASH ACCOUNT: 00 104200		EASTERN VENDOR 1132									
VENDOR		REMIT	PO	TYPE	DUE DATE	INVOICE	AMOUNT	DOCUMENT	VOUCHER	CHECK	
21813	ROBERT W. JELLEY	0000		INV	02/24/2026	2026-473		344948	470228		
	<b>ACCOUNT DETAIL</b>					<b>LINE AMOUNT</b>					
	1 1135701 55500 3510		ATH O/MIS	ATH OF/MIS		60.00					
							60.00				
21813	ROBERT W. JELLEY	0000		INV	02/24/2026	2026-474		344949	470229		
	<b>ACCOUNT DETAIL</b>					<b>LINE AMOUNT</b>					
	1 1135701 55500 3510		ATH O/MIS	ATH OF/MIS		60.00					
							60.00				
21813	ROBERT W. JELLEY	0000		INV	02/24/2026	2026-475		344950	470230		
	<b>ACCOUNT DETAIL</b>					<b>LINE AMOUNT</b>					
	1 1135701 55500 3510		ATH O/MIS	ATH OF/MIS		60.00					
							60.00				
21813	ROBERT W. JELLEY	0000		INV	02/24/2026	2026-476		344951	470231		
	<b>ACCOUNT DETAIL</b>					<b>LINE AMOUNT</b>					
	1 1135701 55500 3510		ATH O/MIS	ATH OF/MIS		60.00					
							60.00				
							<b>CHECK TOTAL</b>				
							<b>1,585.00</b>				
14267	GEORGE JULIANO	0000		INV	02/24/2026	2026-477		344952	470232		
	<b>ACCOUNT DETAIL</b>					<b>LINE AMOUNT</b>					
	1 1135701 55500 3510		ATH O/MIS	ATH OF/MIS		104.00					
							104.00				
							<b>CHECK TOTAL</b>				
							<b>104.00</b>				
10496	JOHN LAPIERRE	0000		INV	02/24/2026	2026-437		344849	470130		
	<b>ACCOUNT DETAIL</b>					<b>LINE AMOUNT</b>					
	1 1135701 55500 3510		ATH O/MIS	ATH OF/MIS		78.00					
							78.00				
10496	JOHN LAPIERRE	0000		INV	02/24/2026	2026-438		344850	470131		
	<b>ACCOUNT DETAIL</b>					<b>LINE AMOUNT</b>					
	1 1135701 55500 3510		ATH O/MIS	ATH OF/MIS		78.00					
							78.00				
							<b>CHECK TOTAL</b>				
							<b>156.00</b>				
21439	MATTHEW LEE	0000		INV	02/24/2026	2026-422		344660	469934		
	<b>ACCOUNT DETAIL</b>					<b>LINE AMOUNT</b>					
	1 1135701 55500 3510		ATH O/MIS	ATH OF/MIS		104.00					
							104.00				

PRELIMINARY CITY OF MELROSE WARRANT REPORT

Detail Invoice List

WARRANT: S26061 02/24/2026

CASH ACCOUNT: 00		104200		EASTERN VENDOR 1132							
VENDOR	REMIT	PO	TYPE	DUE DATE	INVOICE	AMOUNT	DOCUMENT	VOUCHER	CHECK		
					<b>CHECK TOTAL</b>	<b>104.00</b>					
22534	MATTHEW LEMIEUX	0000	INV	02/24/2026	2026-407		344572	469843			
	<b>ACCOUNT DETAIL</b>				<b>LINE AMOUNT</b>						
	1	1135701	55500 3510	ATH O/MIS	ATH OF/MIS	97.00					
						97.00					
22534	MATTHEW LEMIEUX	0000	INV	02/24/2026	2026-408		344573	469844			
	<b>ACCOUNT DETAIL</b>				<b>LINE AMOUNT</b>						
	1	1135701	55500 3510	ATH O/MIS	ATH OF/MIS	93.00					
						93.00					
					<b>CHECK TOTAL</b>	<b>190.00</b>					
19468	WILLIAM MANNING	0000	INV	02/24/2026	2026-439		344852	470132			
	<b>ACCOUNT DETAIL</b>				<b>LINE AMOUNT</b>						
	1	1135701	55500 3510	ATH O/MIS	ATH OF/MIS	165.00					
						165.00					
					<b>CHECK TOTAL</b>	<b>165.00</b>					
484510	ANCELMO MARTINEZ	0000	INV	02/24/2026	2026-478		344953	470233			
	<b>ACCOUNT DETAIL</b>				<b>LINE AMOUNT</b>						
	1	1135701	55500 3510	ATH O/MIS	ATH OF/MIS	104.00					
						104.00					
					<b>CHECK TOTAL</b>	<b>104.00</b>					
19721	RICARDO MARTINS	0000	INV	02/24/2026	2026-409		344574	469845			
	<b>ACCOUNT DETAIL</b>				<b>LINE AMOUNT</b>						
	1	1135701	55500 3510	ATH O/MIS	ATH OF/MIS	97.00					
						97.00					
					<b>CHECK TOTAL</b>	<b>97.00</b>					
24545	KEVIN MCGRATH	0000	INV	02/24/2026	2026-479		344954	470234			
	<b>ACCOUNT DETAIL</b>				<b>LINE AMOUNT</b>						
	1	1135701	55500 3510	ATH O/MIS	ATH OF/MIS	112.00					
						112.00					
					<b>CHECK TOTAL</b>	<b>112.00</b>					

PRELIMINARY CITY OF MELROSE WARRANT REPORT

Detail Invoice List

WARRANT: S26061 02/24/2026

CASH ACCOUNT: 00 104200		EASTERN VENDOR 1132									
VENDOR		REMIT	PO	TYPE	DUE DATE	INVOICE	AMOUNT	DOCUMENT	VOUCHER	CHECK	
24589	MOHAMMAD FUAD MKAYED	0000		INV	02/24/2026	2026-423		344661	469935		
	<b>ACCOUNT DETAIL</b>					<b>LINE AMOUNT</b>					
	1 1135701 55500 3510		ATH O/MIS	ATH OF/MIS		104.00					
							104.00				
						<b>CHECK TOTAL</b>	<b>104.00</b>				
13131	NATHAN MONTEIRO	0000		INV	02/24/2026	2026-424		344662	469936		
	<b>ACCOUNT DETAIL</b>					<b>LINE AMOUNT</b>					
	1 1135701 55500 3510		ATH O/MIS	ATH OF/MIS		107.00					
							107.00				
						<b>CHECK TOTAL</b>	<b>107.00</b>				
24555	CHESTER MURRAY	0000		INV	02/24/2026	2026-410		344575	469846		
	<b>ACCOUNT DETAIL</b>					<b>LINE AMOUNT</b>					
	1 1135701 55500 3510		ATH O/MIS	ATH OF/MIS		78.00					
							78.00				
						<b>CHECK TOTAL</b>	<b>78.00</b>				
9555	KEVIN MYLES	0000		INV	02/24/2026	2026-425		344663	469937		
	<b>ACCOUNT DETAIL</b>					<b>LINE AMOUNT</b>					
	1 1135701 55500 3510		ATH O/MIS	ATH OF/MIS		86.00					
							86.00				
						<b>CHECK TOTAL</b>	<b>86.00</b>				
24571	AARON PASKOWSKI	0000		INV	02/24/2026	2026-411		344576	469847		
	<b>ACCOUNT DETAIL</b>					<b>LINE AMOUNT</b>					
	1 1135701 55500 3510		ATH O/MIS	ATH OF/MIS		78.00					
							78.00				
						<b>CHECK TOTAL</b>	<b>78.00</b>				
14268	JOHN PELLERIN	0000		INV	02/24/2026	2026-480		344955	470235		
	<b>ACCOUNT DETAIL</b>					<b>LINE AMOUNT</b>					
	1 1135701 55500 3510		ATH O/MIS	ATH OF/MIS		112.00					
							112.00				
						<b>CHECK TOTAL</b>	<b>112.00</b>				

PRELIMINARY CITY OF MELROSE WARRANT REPORT

Detail Invoice List

WARRANT: S26061 02/24/2026

CASH ACCOUNT: 00		104200		EASTERN VENDOR 1132							
VENDOR		REMIT	PO	TYPE	DUE DATE	INVOICE	AMOUNT	DOCUMENT	VOUCHER	CHECK	
13155	KENNETH M. PIGEON	0000		INV	02/24/2026	2026-441		344855	470135		
	<b>ACCOUNT DETAIL</b>					<b>LINE AMOUNT</b>					
	1 1135701 55500 3510		ATH O/MIS	ATH OF/MIS		104.00					
						<b>CHECK TOTAL</b>	104.00				
							<b>104.00</b>				
22337	BRIAN PLANZ	0000		INV	02/24/2026	2026-412		344577	469848		
	<b>ACCOUNT DETAIL</b>					<b>LINE AMOUNT</b>					
	1 1135701 55500 3510		ATH O/MIS	ATH OF/MIS		86.00					
						<b>CHECK TOTAL</b>	86.00				
							<b>86.00</b>				
24547	DOUG REED	0000		INV	02/24/2026	2026-442		344856	470137		
	<b>ACCOUNT DETAIL</b>					<b>LINE AMOUNT</b>					
	1 1135701 55500 3510		ATH O/MIS	ATH OF/MIS		104.00					
						<b>CHECK TOTAL</b>	104.00				
							<b>104.00</b>				
24591	GENA RESTIANO	0000		INV	02/24/2026	2026-443		344858	470139		
	<b>ACCOUNT DETAIL</b>					<b>LINE AMOUNT</b>					
	1 1135701 55500 3510		ATH O/MIS	ATH OF/MIS		104.00					
						<b>CHECK TOTAL</b>	104.00				
							<b>104.00</b>				
9096	RICK MANSUR	0000		INV	02/24/2026	2026-440		344853	470133		
	<b>ACCOUNT DETAIL</b>					<b>LINE AMOUNT</b>					
	1 1135701 55500 3510		ATH O/MIS	ATH OF/MIS		104.00					
						<b>CHECK TOTAL</b>	104.00				
							<b>104.00</b>				
22603	RYAN SALVADOR	0000		INV	02/24/2026	2026-481		344956	470236		
	<b>ACCOUNT DETAIL</b>					<b>LINE AMOUNT</b>					
	1 1135701 55500 3510		ATH O/MIS	ATH OF/MIS		104.00					
						<b>CHECK TOTAL</b>	104.00				
							<b>104.00</b>				

PRELIMINARY CITY OF MELROSE WARRANT REPORT

Detail Invoice List

WARRANT: S26061 02/24/2026

CASH ACCOUNT: 00		104200		EASTERN VENDOR 1132							
VENDOR		REMIT	PO	TYPE	DUE DATE	INVOICE	AMOUNT	DOCUMENT	VOUCHER	CHECK	
24588	MATTHEW SCHOENER	0000		INV	02/24/2026	2026-426		344957	470237		
	<b>ACCOUNT DETAIL</b>					<b>LINE AMOUNT</b>					
	1 1135701 55500 3510		ATH O/MIS	ATH OF/MIS		104.00					
						<b>CHECK TOTAL</b>	104.00				
							<b>104.00</b>				
769700	BRENDA SHEA	0000		INV	02/24/2026	2026-444		344859	470140		
	<b>ACCOUNT DETAIL</b>					<b>LINE AMOUNT</b>					
	1 1135701 55500 3510		ATH O/MIS	ATH OF/MIS		165.00					
						<b>CHECK TOTAL</b>	165.00				
							<b>165.00</b>				
772545	STEVEN SHORTER	0000		INV	02/24/2026	2026-482		344958	470238		
	<b>ACCOUNT DETAIL</b>					<b>LINE AMOUNT</b>					
	1 1135701 55500 3510		ATH O/MIS	ATH OF/MIS		104.00					
						<b>CHECK TOTAL</b>	104.00				
							<b>104.00</b>				
773100	JOHN SICUSO	0000		INV	02/24/2026	2026-413		344578	469849		
	<b>ACCOUNT DETAIL</b>					<b>LINE AMOUNT</b>					
	1 1135701 55500 3510		ATH O/MIS	ATH OF/MIS		78.00					
						<b>CHECK TOTAL</b>	78.00				
							<b>78.00</b>				
781550	MARK H SMITH	0000		INV	02/24/2026	2026-445		344860	470141		
	<b>ACCOUNT DETAIL</b>					<b>LINE AMOUNT</b>					
	1 1135701 55500 3510		ATH O/MIS	ATH OF/MIS		78.00					
						<b>CHECK TOTAL</b>	78.00				
							<b>78.00</b>				
880050	JOHN WALDRON	0000		INV	02/24/2026	2026-414		344579	469850		
	<b>ACCOUNT DETAIL</b>					<b>LINE AMOUNT</b>					
	1 1135701 55500 3510		ATH O/MIS	ATH OF/MIS		78.00					
						<b>CHECK TOTAL</b>	78.00				
							<b>78.00</b>				
880050	JOHN WALDRON	0000		INV	02/24/2026	2026-483		344959	470239		
	<b>ACCOUNT DETAIL</b>					<b>LINE AMOUNT</b>					
	1 1135701 55500 3510		ATH O/MIS	ATH OF/MIS		78.00					
						<b>CHECK TOTAL</b>	78.00				
							<b>78.00</b>				

PRELIMINARY CITY OF MELROSE WARRANT REPORT

Detail Invoice List

WARRANT: S26061 02/24/2026

CASH ACCOUNT: 00		104200		EASTERN VENDOR 1132							
VENDOR		REMIT	PO	TYPE	DUE DATE	INVOICE	AMOUNT	DOCUMENT	VOUCHER	CHECK	
880050	JOHN WALDRON	0000		INV	02/24/2026	2026-484		344960	470240		
	<b>ACCOUNT DETAIL</b>					<b>LINE AMOUNT</b>					
	1 1135701 55500 3510		ATH O/MIS	ATH OF/MIS		78.00					
							78.00				
						<b>CHECK TOTAL</b>	<b>234.00</b>				
882445	JAY WALSH	0000		INV	02/24/2026	2026-446		344863	470143		
	<b>ACCOUNT DETAIL</b>					<b>LINE AMOUNT</b>					
	1 1135701 55500 3510		ATH O/MIS	ATH OF/MIS		104.00					
							104.00				
						<b>CHECK TOTAL</b>	<b>104.00</b>				
24587	ZONI WILEY	0000		INV	02/24/2026	2026-427		344665	469939		
	<b>ACCOUNT DETAIL</b>					<b>LINE AMOUNT</b>					
	1 1135701 55500 3510		ATH O/MIS	ATH OF/MIS		86.00					
							86.00				
						<b>CHECK TOTAL</b>	<b>86.00</b>				
24592	GABON WILLIAMS	0000		INV	02/24/2026	2026-447		344866	470146		
	<b>ACCOUNT DETAIL</b>					<b>LINE AMOUNT</b>					
	1 1135701 55500 3510		ATH O/MIS	ATH OF/MIS		104.00					
							104.00				
						<b>CHECK TOTAL</b>	<b>104.00</b>				
15378	MEGAN WINSLOW	0000		INV	02/24/2026	2026-369		344482	469751		
	<b>ACCOUNT DETAIL</b>					<b>LINE AMOUNT</b>					
	1 1135701 55500 3510		ATH O/MIS	ATH OF/MIS		165.00					
							165.00				
						<b>CHECK TOTAL</b>	<b>165.00</b>				
112	INVOICES					WARRANT TOTAL	10,880.15			10,880.15	

**PRELIMINARY CITY OF MELROSE WARRANT REPORT**

**Preliminary Warrant Summary**

WARRANT: S26061 02/24/2026

FUND	ORG	ACCOUNT	AMOUNT	AVLB BUDGET
0111	1135701	ATHLETICS OFFICIALS/M 0111-3-000-000-35-701-00-50-55500 -3510	AT OFFICIAL SALARY 10,845.30	107,011.28
			<b>FUND TOTAL</b>	<b>10,845.30</b>
1200	12004	SCHOOL LUNCH - REV 1200-3-300-300-00-000-00-04-427000-	CHARGES FOR SERVICES 34.85	107,011.28
			<b>FUND TOTAL</b>	<b>34.85</b>
			<b>WARRANT SUMMARY TOTAL</b>	<b>10,880.15</b>
			<b>GRAND TOTAL</b>	<b>10,880.15</b>

PRELIMINARY CITY OF MELROSE WARRANT REPORT

Warrant List by Voucher

WARRANT: S26061 02/24/2026

VOUCHER	VENDOR	DOCUMENT	INVOICE	PO	TYPE	DUE DATE	AMOUNT	COMMENT
469744	97803 ERIC BOUCHER	344475	2026-362		INV	02/24/2026	639.50	WRESTLING QUAD - 4 OT
469745	626010 LIANNE BRADLEY	344476	2026-363		INV	02/24/2026	93.00	BOYS VARSITY SWIMMING
469746	626010 LIANNE BRADLEY	344477	2026-364		INV	02/24/2026	101.00	BOYS VARSITY SWIMMING
469747	108600 THOMAS BROW	344478	2026-365		INV	02/24/2026	86.00	BOYS JR VARSITY FOOTB
469748	17682 TYRONE BROWN	344479	2026-366		INV	02/24/2026	86.00	BOYS JR VARSITY FOOTB
469749	24537 JESSICA BRESNICK	344480	2026-367		INV	02/24/2026	110.00	GIRLS VARSITY GYMNAST
469750	181250 MARLENA BRESNICK	344481	2026-368		INV	02/24/2026	165.00	GIRLS VARSITY GYMNAST
469751	15378 MEGAN WINSLOW	344482	2026-369		INV	02/24/2026	165.00	GIRLS VARSITY GYMNAST
469752	24539 GLENN CALDER	344483	2026-370		INV	02/24/2026	78.00	BOYS JV BASKETBALL -
469753	24557 JENY COLLINS	344484	2026-371		INV	02/24/2026	112.00	GIRLS VARSITY ICE HOC
469755	204585 AMY D'ALESSANDRO	344486	2026-372		INV	02/24/2026	101.00	BOYS VARSITY SWIMMING
469756	22665 ANTONIO DEGIROLAMO	344487	2026-373		INV	02/24/2026	112.00	BOYS VARSITY ICE HOCK
469757	21347 MICHAEL DEVLIN	344488	2026-374		INV	02/24/2026	112.00	GIRLS VARSITY ICE HOC
469758	13150 STEVEN GLENN DILLINGHAM	344489	2026-375		INV	02/24/2026	118.30	BOYS VARSITY WRESTLIN
469759	24066 BRIAN FOGARTY	344490	2026-376		INV	02/24/2026	60.00	CHAIN CREW - BOYS FR
469761	24066 BRIAN FOGARTY	344492	2026-377		INV	02/24/2026	60.00	CHAIN CREW - BOYS JR
469762	24066 BRIAN FOGARTY	344493	2026-378		INV	02/24/2026	60.00	CHAIN CREW - BOYS FRE
469763	24066 BRIAN FOGARTY	344494	2026-379		INV	02/24/2026	60.00	CHAIN CREW - BOYS JR
469764	24066 BRIAN FOGARTY	344495	2026-380		INV	02/24/2026	60.00	CHAIN CREW - BOYS FRE
469765	24066 BRIAN FOGARTY	344496	2026-381		INV	02/24/2026	60.00	CHAIN CREW - BOYS JR
469766	24066 BRIAN FOGARTY	344497	2026-382		INV	02/24/2026	60.00	CHAIN CREW - BOYS JR
469769	24121 CAROLINE FOGARTY	344499	2026-383		INV	02/24/2026	75.00	TICKETS - BOYS VARSIT
469771	24121 CAROLINE FOGARTY	344500	2026-384		INV	02/24/2026	75.00	TICKETS - BOYS VARSIT
469772	24121 CAROLINE FOGARTY	344502	2026-385		INV	02/24/2026	75.00	TICKETS - BOYS VARSIT
469774	24543 DAVID GARDNER	344504	2026-387		INV	02/24/2026	107.00	BOYS VARSITY WRESTLIN
469775	23656 RICHARD GAMBALE	344505	2026-388		INV	02/24/2026	78.00	BOYS FRESHMEN BASKETB
469799	21813 ROBERT W. JELLEY	344529	2026-398		INV	02/24/2026	75.00	ANNOUNCER - BOYS VARS
469802	21813 ROBERT W. JELLEY	344532	2026-400		INV	02/24/2026	60.00	ANNOUNCER - GIRLS VAR
469803	21813 ROBERT W. JELLEY	344533	2026-401		INV	02/24/2026	75.00	ANNOUNCER - BOYS VARS
469836	21813 ROBERT W. JELLEY	344566	2026-402		INV	02/24/2026	60.00	ANNOUNCER - GIRLS VAR
469837	21813 ROBERT W. JELLEY	344567	2026-403		INV	02/24/2026	60.00	ANNOUNCER - BOYS VARS
469838	21813 ROBERT W. JELLEY	344568	2026-404		INV	02/24/2026	75.00	ANNOUNCER - BOYS VARS
469839	21813 ROBERT W. JELLEY	344569	2026-405		INV	02/24/2026	60.00	ANNOUNCER - GIRLS VAR
469843	22534 MATTHEW LEMIEUX	344572	2026-407		INV	02/24/2026	97.00	BOYS VARSITY SWIMMING
469844	22534 MATTHEW LEMIEUX	344573	2026-408		INV	02/24/2026	93.00	BOYS VARSITY SWIMMING
469845	19721 RICARDO MARTINS	344574	2026-409		INV	02/24/2026	97.00	BOYS VARSITY SWIMMING
469846	24555 CHESTER MURRAY	344575	2026-410		INV	02/24/2026	78.00	BOYS FRESHMEN BASKETB
469847	24571 AARON PASKOWSKI	344576	2026-411		INV	02/24/2026	78.00	BOYS FRESHMEN BASKETB
469848	22337 BRIAN PLANZ	344577	2026-412		INV	02/24/2026	86.00	BOYS JR VARSITY FOOTB
469849	773100 JOHN SICUSO	344578	2026-413		INV	02/24/2026	78.00	BOYS FRESHMEN BASKETB

Report generated: 02/19/2026 13:32:47  
 User: Kim Candilieri (kcandilieri)  
 Program ID: apwarrnt

PRELIMINARY CITY OF MELROSE WARRANT REPORT

Warrant List by Voucher

WARRANT: S26061 02/24/2026

VOUCHER	VENDOR	DOCUMENT	INVOICE	PO	TYPE	DUE DATE	AMOUNT	COMMENT
469850	880050 JOHN WALDRON	344579	2026-414		INV	02/24/2026	78.00	BOYS JRV BASKETBALL P
469861	21813 ROBERT W. JELLEY	344589	2026-406		INV	02/24/2026	100.00	ANNOUNCER - THANKSGIV
469916	24554 MATTHEW FROIO	344642	2026-386		INV	02/24/2026	639.50	WRESTLING QUAD / 4 OT
469922	10850 THOMAS AITKEN	344648	2026-415		INV	02/24/2026	112.00	BOYS VARSITY ICE HOCK
469924	68225 ROBERT BEDDIA	344650	2026-416		INV	02/24/2026	86.00	BOYS FRESHMEN FOOTBAL
469926	76310 RAY BERNIER	344651	2026-417		INV	02/24/2026	78.00	BOYS JR VARSITY BASKE
469928	76310 RAY BERNIER	344654	2026-418		INV	02/24/2026	78.00	GIRLS JR VARSITY BASK
469930	17682 TYRONE BROWN	344656	2026-419		INV	02/24/2026	86.00	BOYS JR VARSITY FOOTB
469932	10176 MICHAEL A CARROLL	344658	2026-420		INV	02/24/2026	86.00	BOYS JR VARSITY FOOTB
469933	358280 TIMOTHY HOOTON	344659	2026-421		INV	02/24/2026	86.00	BOYS JR VARSITY FOOTB
469934	21439 MATTHEW LEE	344660	2026-422		INV	02/24/2026	104.00	BOYS VARSITY BASKETBA
469935	24589 MOHAMMAD FUAD MKAYED	344661	2026-423		INV	02/24/2026	104.00	BOYS VARSITY BASKETBA
469936	13131 NATHAN MONTEIRO	344662	2026-424		INV	02/24/2026	107.00	BOYS VARSITY WRESTLIN
469937	9555 KEVIN MYLES	344663	2026-425		INV	02/24/2026	86.00	BOYS FRESHMEN FOOTBAL
469939	24587 ZONI WILEY	344665	2026-427		INV	02/24/2026	86.00	BOYS FRESHMEN FOOTBAL
470120	24536 LUKE BLAESER	344840	2026-428		INV	02/24/2026	165.00	GIRLS VARSITY GYMNAST
470121	112870 RICHARD BRUNO	344841	2026-429		INV	02/24/2026	104.00	GIRLS VARSITY BASKETB
470122	118750 KEN BUSHEY	344842	2026-430		INV	02/24/2026	104.00	BOYS VARSITY BASKETBA
470123	14241 PAUL CISTERNELLI	344843	2026-431		INV	02/24/2026	104.00	GIRLS VARSITY BASKETB
470124	20269 MICHAEL CROSBY	344844	2026-432		INV	02/24/2026	78.00	BOYS JR VARSITY BASKE
470125	20269 MICHAEL CROSBY	344845	2026-433		INV	02/24/2026	78.00	GIRLS JR VARSITY BASK
470126	22535 JOHN FARRELL	344846	2026-434		INV	02/24/2026	78.00	BOYS JR VARSITY BASKE
470128	286186 JEREMY FULLER	344847	2026-435		INV	02/24/2026	104.00	BOYS VARSITY BASKETBA
470129	24593 MATTHEW GANGI	344848	2026-436		INV	02/24/2026	104.00	BOYS VARSITY BASKETBA
470130	10496 JOHN LAPIERRE	344849	2026-437		INV	02/24/2026	78.00	BOYS JR VARSITY BASKE
470131	10496 JOHN LAPIERRE	344850	2026-438		INV	02/24/2026	78.00	GIRLS JR VARSITY BASK
470132	19468 WILLIAM MANNING	344852	2026-439		INV	02/24/2026	165.00	GIRLS VARSITY GYMNAST
470133	9096 RICK MANSUR	344853	2026-440		INV	02/24/2026	104.00	BOYS VARSITY BASKETBA
470135	13155 KENNETH M. PIGEON	344855	2026-441		INV	02/24/2026	104.00	BOYS VARSITY BASKETBA
470137	24547 DOUG REED	344856	2026-442		INV	02/24/2026	104.00	GIRLS VARSITY BASKETB
470139	24591 GENA RESTIANO	344858	2026-443		INV	02/24/2026	104.00	GIRLS VARSITY BASKETB
470140	769700 BRENDA SHEA	344859	2026-444		INV	02/24/2026	165.00	GIRLS VARSITY GYMNAST
470141	781550 MARK H SMITH	344860	2026-445		INV	02/24/2026	78.00	BOYS JR VARSITY BASKE
470143	882445 JAY WALSH	344863	2026-446		INV	02/24/2026	104.00	BOYS VARSITY BASKETBA
470146	24592 GABON WILLIAMS	344866	2026-447		INV	02/24/2026	104.00	GIRLS VARSITY BASKETB
470202	23718 KENNETH DANIELS	344922	2026-450		INV	02/24/2026	112.00	BOYS VARSITY ICE HOCK
470203	19982 LEONARD DAVID	344923	2026-451		INV	02/24/2026	117.00	GIRLS FR SOCCER VS WI
470205	23409 JOHN DESKAVICH	344925	2026-452		INV	02/24/2026	78.00	BOYS JR VARSITY BASKE
470206	23409 JOHN DESKAVICH	344926	2026-453		INV	02/24/2026	104.00	GIRLS VARSITY BASKETB
470208	256940 DAVID ENGELSON	344928	2026-454		INV	02/24/2026	78.00	BOYS FRESHMEN BASKETB

Report generated: 02/19/2026 13:32:47  
 User: Kim Candilieri (kcandilieri)  
 Program ID: apwarrnt


PRELIMINARY CITY OF MELROSE WARRANT REPORT

Warrant List by Voucher

WARRANT: S26061 02/24/2026

VOUCHER	VENDOR	DOCUMENT	INVOICE	PO	TYPE	DUE DATE	AMOUNT	COMMENT
470209	24121 CAROLINE FOGARTY	344929	2026-455		INV	02/24/2026	60.00	CROWD CONTROL GIRLS V
470211	24597 ALEXANDER FRANKEL	344931	2026-456		INV	02/24/2026	78.00	GIRLS JR VARSITY BASK
470212	22503 ROBERT GAMBALE	344932	2026-457		INV	02/24/2026	78.00	BOYS FRESHMEN BASKETB
470213	289965 PETER GANGI	344933	2026-458		INV	02/24/2026	104.00	GIRLS VARSITY BASKETB
470214	24598 KEVIN HULSE	344934	2026-459		INV	02/24/2026	112.00	BOYS VARSITY ICE HOCK
470215	21813 ROBERT W. JELLEY	344935	2026-460		INV	02/24/2026	60.00	ANNOUNCER GIRLS V ICE
470216	21813 ROBERT W. JELLEY	344936	2026-461		INV	02/24/2026	60.00	ANNOUNCER GIRLS VARI
470217	21813 ROBERT W. JELLEY	344937	2026-462		INV	02/24/2026	60.00	ANNOUNCER GIRLS VARI
470218	21813 ROBERT W. JELLEY	344938	2026-463		INV	02/24/2026	60.00	ANNOUNCER BOYS VARSIT
470219	21813 ROBERT W. JELLEY	344939	2026-464		INV	02/24/2026	60.00	ANNOUNCER BOYS VARSIT
470220	21813 ROBERT W. JELLEY	344940	2026-465		INV	02/24/2026	60.00	ANNOUNCER BOYS VARSIT
470221	21813 ROBERT W. JELLEY	344941	2026-466		INV	02/24/2026	60.00	ANNOUNCER GIRLS VARI
470222	21813 ROBERT W. JELLEY	344942	2026-467		INV	02/24/2026	60.00	ANNOUNCER GIRLS VARI
470223	21813 ROBERT W. JELLEY	344943	2026-468		INV	02/24/2026	60.00	ANNOUNCER BOYS VARSIT
470224	21813 ROBERT W. JELLEY	344944	2026-469		INV	02/24/2026	60.00	ANNOUNCER GIRLS VARI
470225	21813 ROBERT W. JELLEY	344945	2026-470		INV	02/24/2026	60.00	ANNOUNCER GIRLS VARI
470226	21813 ROBERT W. JELLEY	344946	2026-471		INV	02/24/2026	60.00	ANOUNCER GIRLS VARSIT
470227	21813 ROBERT W. JELLEY	344947	2026-472		INV	02/24/2026	60.00	ANNOUNCER BOYS VARSIT
470228	21813 ROBERT W. JELLEY	344948	2026-473		INV	02/24/2026	60.00	ANNOUNCER GIRLS VARI
470229	21813 ROBERT W. JELLEY	344949	2026-474		INV	02/24/2026	60.00	ANNOUNCER BOYS VARSIT
470230	21813 ROBERT W. JELLEY	344950	2026-475		INV	02/24/2026	60.00	ANNOUNCER GIRLS VARI
470231	21813 ROBERT W. JELLEY	344951	2026-476		INV	02/24/2026	60.00	ANNOUNCER BOYS VARSIT
470232	14267 GEORGE JULIANO	344952	2026-477		INV	02/24/2026	104.00	GIRLS VARSITY BASKETB
470233	484510 ANCELMO MARTINEZ	344953	2026-478		INV	02/24/2026	104.00	BOYS VARSITY BASKETBA
470234	24545 KEVIN MCGRATH	344954	2026-479		INV	02/24/2026	112.00	GIRLS VARSITY ICE HOC
470235	14268 JOHN PELLERIN	344955	2026-480		INV	02/24/2026	112.00	GIRLS VARSITY ICE HOC
470236	22603 RYAN SALVADOR	344956	2026-481		INV	02/24/2026	104.00	BOYS VARSITY BASKETBA
470237	24588 MATTHEW SCHOENER	344957	2026-426		INV	02/24/2026	104.00	BOYS VARSITY BASKETBA
470238	772545 STEVEN SHORTER	344958	2026-482		INV	02/24/2026	104.00	BOYS VARSITY BASKETBA
470239	880050 JOHN WALDRON	344959	2026-483		INV	02/24/2026	78.00	BOYS JR VARSITY BASKE
470240	880050 JOHN WALDRON	344960	2026-484		INV	02/24/2026	78.00	GIRLS JR VARSITY BASK
470280	17367 CHRISTINE BYLER	344998	FY26REFUND		INV	02/24/2026	34.85	FY26 STUDENTS LUNCH B

<b>WARRANT TOTAL</b>							<b>10,880.15</b>	
----------------------	--	--	--	--	--	--	------------------	--

January 2026		Melrose Public Schools			
		Fy2026 YTD School Foodservice Report			
					
		January 2025		January 2026	
<b>Days of Operation</b>		97		95	
	Total ALL Student Lunch Counts*	191,181		191,425	
<b>REVENUES</b>	* lunch & ala carte student meals				
	Sales	\$122,051	13.8%	\$94,101	10.7%
	Reimbursements	\$764,618	86.2%	\$785,800	89.3%
<b>TOTAL REVENUES</b>		<b>\$ 886,669</b>	100.0%	<b>\$ 879,901</b>	100.0%
	Daily Sales Average	\$ 9,141		\$ 9,262	
<b>EXPENSES</b>	Daily Meals Average	1971		2015	
	Product Cost (Food & Paper Purchases)	\$214,002	24.1%	\$243,914	27.7%
	Total Personnel Costs	\$353,272	39.8%	\$348,725	39.6%
	Total Other Directs	\$9,568	1.1%	\$15,498	1.8%
	Rebate Credits	\$52,527	5.9%	\$56,000	6.4%
	Administrative Charges	\$65,400	7.4%	\$67,885	7.7%
	Management Fee Expense	\$11,450	1.3%	\$11,885	1.4%
<b>TOTAL EXPENSES</b>		<b>\$ 653,692</b>	73.7%	<b>\$ 687,907</b>	78.2%
<b>NET PROFIT / LOSS YTD</b>		<b>\$ 232,977</b>	26.3%	<b>\$ 191,994</b>	21.8%
<b>Notes:</b>	Meal counts are up from last year				
	Operating days are down due to weather				
<b>Product Costs</b>	Cold lunch options expanded at elementary level. Increase in product cost by ordering more variety deli meats to serve to elementary students				
	On budget				
<b>Personnel Costs</b>	On Budget				
<b>Other Direct Costs</b>	On Budget				
<b>Management Fee Expense</b>	On budget				
<b>Net Profit to Program</b>	On budget				
	Please visit our Website:			<a href="http://melroseschools.nutrislice.com">http://melroseschools.nutrislice.com</a>	

Report	Timing	Category
Personnel Report	Monthly	Announcements of Supt.
Student Assessments (state and local) Aligned with Strategic Plan	Bi-Monthly	Announcements of Supt.
Technology Plan	April	Announcements of Supt.
Cafeteria Report	Bi-Monthly	Consent
Concussion Report	Fall	Consent
Warrants	Each meeting	Consent
Department Reviews	As needed	EPP
Professional Development Plan	May	EPP
Summer Learning Options	June	EPP
MVMMS & MHS Programs of Study	May/June	EPP
Secondary School Code of Conduct	May/June	EPP
Elementary Handbook	Summer	EPP
School Improvement Plans	June	
Revolving Accounts	At least monthly	FF
Grant Review	At least monthly	FF
Budget Summary	At least monthly	FF
One-Time Funding Requests through Mayor	1-2 mtgs & prior to City Council request	FF
Special Education Expense Update (including Transportation)	At least monthly	FF
Donations	Monthly	FF
Summer Learning Expense Report	Fall	FF
Monetary Requests from City Funds that have a school-directed funding clause, e.g. PEG through Mayor	1-2 mtgs & prior to City Council request	FF
Education Stations Review and Fees	Within budget process	FF
Student Fees (athletic, music, etc)	Within budget process	FF
Student Meal Price Recommendation	Within budget process	FF

EOYR Audit	Spring	FF
Facilities Rental Review	May/June	FF
Enrollment Report by School/Grade	At least quarterly	PP
School Calendar: Upcoming Year	Fall	PP
Approval of District Officers	Early Fall	Chair
Site Council Election Process	Late Summer/ Early Fall	Chair
Superintendent Evaluation	June/July	Chair
Election of Student Representatives	Spring	Chair

GRANT	Grant Manager	Awarded Amount	Balance as of 02/19/26	END DATE	Final Report Due	Federal/State	MULTIYEAR	MUNIS FUND	FUND CODE
<b>TITLE I, Part A - Improving Basic Programs Operated by Local School Districts Federal Grant Program</b> - Title I, Part A of the federal Elementary and Secondary Education Act (ESEA) provides supplemental resources to local school districts to help provide all children significant opportunity to receive a fair, equitable, and high-quality education, and to close educational achievement gaps.									
TITLE I 305 - FY25	Melanie Acevedo	\$137,188.00	\$4,118.87	9/30/26		FEDERAL	YES	1477	305
TITLE I 305 - FY26	Melanie Acevedo	\$134,438.00	\$134,113.00	9/30/27		FEDERAL	YES	1477	305
<b>TITLE II, Part A - Building Systems of Support for Excellent Teaching and Leading - Federal Grant Program</b> - Title II, Part A of the federal Elementary and Secondary Education Act (ESEA) provides supplemental resources to school districts to improve high quality systems of support for excellent teaching and leading.									
TITLE IIA 140 - FY25	Melanie Acevedo	\$52,482.00	\$18,163.93	9/30/26		FEDERAL	YES	1482	140
TITLE IIA 140 - FY26	Melanie Acevedo	\$54,282.00	\$53,511.35	9/30/27		FEDERAL	YES	1482	140
<b>TITLE III - English Language Acquisition and Academic Achievement Program for English Learners and Immigrant Children and Youth - Federal Grant Program</b> - Title III of the federal Elementary and Secondary Education Act (ESEA) provides supplemental resources to local school districts to help ensure that English learners (ELs) and immigrant children and youth attain English proficiency and develop high levels of academic achievement in English, assist teachers and administrators to enhance their capacity to provide effective instructional programs designed to prepare ELs and immigrant children and youth to enter all-English instructional settings, and promote parental, family, and community participation in language instruction programs for parents, families, and communities.									
TITLE III 180 - FY25	Melanie Acevedo	\$30,699.00	\$6,856.69	9/30/26		FEDERAL	YES	1498	180
TITLE III 180 - FY26	Melanie Acevedo	\$31,946.00	\$31,643.89	9/30/27		FEDERAL	YES	1498	180
<b>TITLE IV, Part A - Student Support and Academic Enrichment Grant - Federal Grant Program</b> - Title IV, Part A of the federal Elementary and Secondary Education Act (ESEA) provides supplemental resources to local school districts to build capacity to help ensure that all students have equitable access to high quality educational experiences.									
TITLE IV 309 - FY25	Melanie Acevedo	\$10,000.00	\$0.00	9/30/26		FEDERAL	YES	1476	309
TITLE IV 309 - FY26	Melanie Acevedo	\$10,000.00	\$10,000.00	9/30/27		FEDERAL	YES	1476	309
<b>SPED 240 - Individuals with Disabilities Education Act (IDEA) Federal Special Education Entitlement Grant</b> - the purpose of this federal special education entitlement grant program is to provide funds to ensure that eligible students with disabilities receive a free and appropriate public education that includes special education and related services designed to meet their individual needs									
SPED 240 - FY25	Linda Chase & Marc Kerble	\$1,107,679.00	\$0.00	9/30/26		FEDERAL	YES	1475	240
SPED 240 - FY26	Linda Chase & Marc Kerble	\$1,099,123.00	\$146,244.55	9/30/27		FEDERAL	YES	1475	240
<b>SPED 262 - Early Childhood Special Education (ECSE) Program Federal Entitlement Grant</b> - the purpose of this federal special education entitlement grant program is to provide funds to ensure that eligible 3, 4, and 5-year-old children with disabilities receive a free and appropriate public education that includes special education and related services designed to meet their individual needs in the least restrictive environment (LRE). Local Education Agencies (LEAs) are required to ensure that children, aged 3 through 5, who need special education and related services, receive these services through free and appropriate public education (FAPE), in accordance with the Individuals with Disabilities Education Act — (IDEA4) and Massachusetts Special Education laws (M.G.L. c. 71B) and regulations (603 CMR 28.00)									
SPED 262 - FY25	Linda Chase & Marc Kerble	\$24,189.00	\$0.00	9/30/26		FEDERAL	YES	1474	262
SPED 262 - FY26	Linda Chase & Marc Kerble	\$24,129.00	\$24,129.00	9/30/27		FEDERAL	YES	1474	262
<b>METCO</b> - the purpose of the state-funded METCO Program is to expand educational opportunities, increase diversity, and reduce racial isolation by permitting students in Boston and Springfield to attend public schools in other communities that have agreed to participate									
METCO - FY26	Doreen Ward	\$952,489.00	\$136,037.38	6/30/26		STATE	NO	1577	317
<b>Harvard Donation - Harvard Donation</b> - In 2024, MVMMS partnered with Harvard University to take part in the Project THINK and Project Share study. In turn, they made a donation as well as providing the results and interventions studied.									
FY24 Harvard Donation	Kerri Ciulla	\$10,655.00	\$3,638.01	n/a		n/a	NO	1724	n/a
<b>COPS SVPP GRANT</b> - The Students, Teachers, and Officers Preventing School Violence Act of 2018 (STOP School Violence Act of 2018) gave the COPS Office authority to provide awards directly to States, units of local government, or Indian tribes to improve security at schools and on school grounds in the jurisdiction of the grantee through evidence-based school safety programs and technology.									
COPS SVPP GRANT	Ken Kelley	\$139,088.00	\$15,505.30	9/30/27		n/a	NO	1350	n/a
<b>FY2026: FAIR SHARE EARMARKS</b> - The purpose of this RFP is to administer state legislative earmarks to Public School districts as outlined in the FY26 state budget. To provide for supplementing certain activities and projects in each district. A complete list of eligible districts and associated earmark language may be found here: List of Allocations and Project									
FY26 FAIRSHARE EARMARKS	Ken Kelley/Jim Troup	\$300,000.00 (\$125K SCHOOL/\$175K DPW)	\$118,281.65	6/30/26		STATE	YES	1727	2517



# Melrose Public Schools Administrative Offices

360 Lynn Fells Parkway, Melrose, MA 02176

*Linda S. Chase*

Interim Co-Director of Special Education

(781) 979-2284

Fax (781) 979-2208

*Dr. Marc Kerble*

Interim Co-Director of Special Education

(781) 979-2284

Fax (781) 979-2208

To: Melrose School Committee

From: Linda Chase, Interim Co-Director of Special Education Director  
Marc Kerble, Interim Co-Director of Special Education Director  
Ken Kelley, Interim Deputy Superintendent

Subject: Special Education Expense Update: January 2026

Date: January 22, 2026

---

Thank you to all school committee members for your continued efforts to support all students, staff, and families. Contained in this memo you will find highlights regarding the current special education costs to date as well as potential additional costs.

### **Special Education Initiatives:**

- The special education department is embarking on an exciting endeavor. Committed to the provision of high quality instruction, a new initiative began in January, 2026. The goal of this initiative is to develop staff capacity to teach reading and address student mental health challenges. The overarching driving force behind the plan will be the Special Education Ad Hoc Committee (SEAHC) led by the co-interim special education directors. SEAHC members include outside professional experts in the field of reading, testing, dyslexia, and mental health and district teachers, leaders, and related service providers. Members of SEAHC will serve on one of seven teams: 1) Data and Analysis, 2) Methodology, 3) Assessment and Intervention, 4) School Avoidance, 5) Response to Dysregulated Students, 6) Access and Developmental Learning Programs, and 7) Special Education Staff Development. To date 33 staff members and 5 consultants will serve as members of the SEAHC. IDEA grant funds are contributing to costs for outside professionals.

### **Integrated Monitoring DESE Review:**

- On Tuesday, December 16, 2025, as part of our Integrated Monitoring cycle, two representatives from DESE toured Roosevelt, Hoover, Horace Mann, Franklin, Melrose Veterans Memorial Middle School and Melrose High School. The primary focus was to visit the specialized programs, spaces used to deliver related services, EL services, and any spaces used for timeout/calming. (Please note: Melrose Public Schools have no timeout spaces)

- Other components of the Integrated Monitoring included a review of civil rights and special education documentation, a self assessment conducted by Melrose Public Schools, parent survey, and interviews with staff and administrators.
- On Friday, January 16, 2026, a feedback session with the Integrated Monitoring representative from DESE was held to provide preliminary feedback about the monitoring results. Based on the reviewer's feedback, it is anticipated that the final report will be very positive.

**Funding Sources for the 2025-2026 school year are as follows:**

- The IDEA federal grant funds continue to be used for a 30 hour Ortin Gillingham or Morphology course for staff. There are 36 staff members participating in the course.
- The IDEA 240 grant also includes funding for additional reading support for students at the middle school and for consultants with expertise in mental health and specialized programming.
- While DESE has completed its review of special education and civil rights, monitoring efforts continue with DESE's review of the use of IDEA funds with a monitoring report due in late January/early February.

**Out of District Tuitions for FY26**

- There has been no significant change to the out of district tuition and transportation costs. There are a few out of district referrals in process but to date these have not been finalized. As always, the potential for move-ins and unanticipated placements continues to exist.

**Transportation**

- There are no significant changes to the special education transportation costs.

**Personnel**

- Personnel costs continue to be on target.
- We have secured an agency hire for one staff leave of absence. Efforts to cover remaining openings are on-going. Vacancies exist for a BCBA position, a Speech and Language Pathologist, and several paraprofessionals.



## Melrose Public Schools Administrative Offices

360 Lynn Fells Parkway, Melrose, MA 02176  
Phone: 781-662-2000 V/TTY FAX: 781-979-2112

### **CARI BERMAN**

Interim Superintendent  
cberman@melroseschools.com

### **KEN KELLEY**

Interim Deputy Superintendent  
kkelley@melroseschools.com

To: Melrose School Committee

From: Cari Berman, Interim Superintendent and Ken Kelley, Interim Deputy Superintendent

Subject: FY27 Budget Executive Summary

Date: February 24, 2026

---

On behalf of the Melrose Public Schools (MPS), we want to extend our deepest appreciation to the voters of Melrose. The passing of the historic override last November represents a profound investment in our city's future. It signaled a collective commitment to our children and provided the essential resources needed to begin moving forward.

For the past two years, we have operated under financial constraints, eliminating over 30 positions to close a deficit gap that was too large to bridge with existing funding. As we move into FY27, our primary goal is stabilization. We are shifting from "reduction thinking" to "strategic opportunity thinking." We will examine every eliminated position with a focus on student growth and data-driven research, ensuring that our restoration of staff is both fiscally responsible and educationally impactful.

### **Our Strategic Framework:**

Our FY27 planning is guided by the MPS Strategic Plan, ensuring every student graduates as an engaged, challenged, and self-directed learner. All budgetary decisions are filtered through these five core pillars:

- #1 Academic Knowledge and Skills: Ensuring rigorous, high-quality instruction.
- #2 Personalized and Equitable Opportunities: Meeting individual student needs and removing barriers.
- #3 Global Engagement: Preparing students for a connected world.
- #4 Professional Culture: Investing in our staff through support and competitive contracts.
- #5 Finance and Operations: Practicing responsible stewardship of all resources.

To understand where we are going, we must acknowledge the fiscal challenges of FY22–FY25. The period between FY22 and FY25 was defined by a series of complex financial pressures that required both decisive action and a fundamental shift in our operational philosophy. We began this journey by identifying and correcting legacy budgeting practices that had historically contributed to a persistent budget gap, though the resulting deficit eventually proved too substantial to close through traditional funding alone. This work occurred while we successfully settled five collective bargaining agreements (covering our teachers, paraprofessionals, administrative assistants, drivers, and traffic supervisors) to ensure our dedicated staff were supported even as our fiscal landscape tightened.

Our progress was challenged by the unique economic makeup of Melrose. As a primarily residential community, we do not see the significant annual revenue growth produced by more commercial communities. This revenue constraint was further strained when the City lost nearly \$1 million due to state-level changes in dispensary contracts. When these losses were coupled with mandatory fixed costs, such as the 14% increase in OSD tuition for special education, we were forced to implement a strict budget freeze to maintain control and prioritize essential services. Throughout this time, the City demonstrated its commitment to our students by prioritizing the school department through the use of one-time funding and a collaborative approach to municipal budgeting.

**During this period, we:**

- Corrected Legacy Practices: Addressed outdated budgeting methods that contributed to the structural deficit.
- Contractual Commitments: Successfully settled five Collective Bargaining Agreements (CBAs) for Teachers, Paraprofessionals, Administrative Assistants, Drivers, and Traffic Supervisors.
- Revenue Realities: Navigated a primarily residential tax base and a sudden \$1M loss in state-level dispensary contract revenue.
- Fixed Cost Pressures: Absorbed a 14% OSD tuition increase—a mandatory cost for special education that cannot be adjusted.

Despite these hurdles, our FY23–FY25 independent audits returned no major findings. Our spending aligns with revenue, and through significant collaboration with the Mayor’s Office, Auditor, and Treasurer, we have stabilized the "City side" costs (IT, Facilities, Nurses, Benefits) to protect the classroom experience.

The recent impacts of the FY25 and FY26 cycles have been characterized by an unprecedented level of collaboration with our City partners. This strategic alliance has allowed the City to prioritize the School Department by maintaining essential operational costs on the municipal side—specifically covering IT, custodial services, facilities, school nurses, and benefits, which ensures that the core MPS budget remains focused on its primary mission of Teaching and Learning.

Our commitment to fiscal stewardship is clear. Independent audits from FY23 through FY25 returned no major findings, confirming that our spending is strictly aligned with our actual revenue. However, we must acknowledge that achieving this balance within our previous means came at a high price, necessitating significant staffing and programming reductions that felt very real in our classrooms.

Our FY27 planning is guided by the MPS Strategic Plan, ensuring every student graduates as an engaged, challenged, and self-directed learner. With the successful override and the 1A vote, we are stabilizing the district. Our budget is divided into Fixed Costs (over 92%), such as salaries and mandated services, and Variable Costs, such as supplies and materials.

**Our key priorities for FY27 include:**

- MVMMS Team Model: Reestablishing the team model in grades 6 and 7 to support social-emotional and academic transitions.
- Class Size: Prioritizing staffing resources to keep class sizes as low as possible.
- Intervention: Increasing focus on core subjects and Tier 2 intervention at the Elementary Schools and the Middle School.
- Capacity Building: Increasing our capacity for research based curriculum and ensuring access to high quality materials to continue to develop and support educators

- Compliance: Maintaining a primary focus on federal and state special education laws and contractual obligations.
- [Contract Negotiations](#): Negotiate a mutually beneficial agreement with the MEU (teachers, paraprofessionals, and secretaries) that provides market-competitive compensation and a benefits package while maintaining the city's long-term fiscal health.

**MPS revenue sources include the following:**

- City Appropriation: Includes Chapter 70 state aid (prelim state [estimate](#)) for the operating budget.
- Circuit Breaker: State reimbursement for specific special education costs.
- Revolving Funds: Tuition and fees collected by the district.
- Grants: Essential federal and state funding, including METCO, IDEA, and Titles I-IV.

**Items in motion:**

Our objective is to present a balanced, transparent budget that accurately represents the district's needs from infrastructure to instruction. By maintaining this discipline, we ensure that students have what they need, when they need it. This year, our process must account for several critical unknowns, including the resolution of three collective bargaining agreements (CBAs) and the finalization of Chapter 70 state aid as the Governor's budget progresses through the legislature. We are not simply looking to return to 'business as usual'; we are looking to build a foundation that accounts for these variables and prevents future volatility

Stabilization is not the absence of growth; it is the *prerequisite* for it. By being mindful and fiscally responsible today, we ensure that Melrose Public Schools remain strong for years to come. After our meeting on March 10, 2026, we will publish a detailed line item budget on the MPS website to remain transparent with the community that has invested so much in us.

The FY27 Budget timeline outlines the complete budget process that includes a collaborative review and line-by-line analysis of budgetary needs, discussion of known and anticipated student needs, input from our PreK-12 principals, along with the collective work by school and district level leaders of the Melrose Public Schools.

**Key events include:**

Date(s)	Milestone
City Finance Meetings	Ongoing Collaboration: MPS Deputy Supt. attends biweekly City CFO meeting with Department Finance Directors MPS and City leadership (Superintendent, Mayor, CFO, Deputy Supt) meet biweekly
February 24, 2026	MPS FY27 Teaching and Learning Budget Overview and update - Executive Summary
February 25, 2026	In person Budget Listening Session for all MPS Educators <ul style="list-style-type: none"> <li>● 3:00pm - 4:00pm in the MHS Learning Commons</li> </ul>
March 3, 2026	In person Budget Listening Session for all caregivers and community members <ul style="list-style-type: none"> <li>● 6:00pm - 7:00pm in the MHS Learning Commons</li> </ul>
March 10, 2026	MPS FY27 Teaching and Learning Budget <ul style="list-style-type: none"> <li>● MPS School Committee designates budget categories (vote on categories</li> </ul>

Date(s)	Milestone
	recommended) Budget Deliberations <ul style="list-style-type: none"> <li>● Fees</li> <li>● Cost centers/Depts</li> </ul>
March 11, 2026	Virtual Budget Listening Session for all parents, caregivers, and community members <ul style="list-style-type: none"> <li>● 6:00pm - 7:00pm via Google Meet</li> </ul>
March 24, 2026	MPS FY27 Teaching and Learning Budget Budget Deliberations <ul style="list-style-type: none"> <li>● Fees (vote recommended)</li> <li>● Cost centers/Depts</li> <li>● Proposed refinements</li> </ul>
April 7, 2026	Tentative if needed
April 14, 2026	Public Hearing(s) on FY27 Budget (6PM prior to scheduled MPS SC meeting) Budget Deliberations (as needed), proposed refinements, and vote (recommended) MPS Teaching and Learning budget referred to City Council for consideration
May 11, 2026	Joint SC/CC Special Meeting to receive the FY27 budget

\*Dates subject to change/adjustment based on potential weather impacts to schedule

Meeting Date	Agenda Item	Category	Action	
January 27	Meeting Minutes Warrants Cafeteria report	SC Chair	Consent Agenda Vote	
	School Registration	Superintendent	Report	
	Personnel Report	Superintendent	Report	
	Enrollment Report	Superintendent	Report	
	SEEM Report	Superintendent	Report	
	Special Education Expense Report	F&F	Report	
	FY27 Budget Timeline	F&F	Vote	
	Rolling Agenda	SC Chair	Report	
	Data Presentations	SC Chair	Vote	
	Office Hours	SC Chair	Report	
	Outreach Reports	SC Chair	Report	
	Subcommittees	SC Chair	Report	
February 10	Meeting Minutes, Donations Warrants	SC Chair	Consent Agenda/Vote	
	Personnel Report	Superintendent	Report	
	School Registration Information	Superintendent	Report	
	Student Assessments (state and local) Aligned with Strategic Plan	Superintendent	Report	
	Monthly Budget Summary/Grants/Revl Accts	F&F	Vote	
	FY27 Budget Categories	F&F	Vote	
	Rolling Agenda	SC Chair	Report	
	Outreach Reports	SC Chair	Report	
February 24	Meeting Minutes, Donations, Warrants	SC Chair	Vote	
	Registration Updates	Superintendent	Report	
	Special Education Expense Report	F&F	Report	
	FY27 Superintendent Budget Update	F&F	Report	
	Fees Update and Planning	F&F	Discussion	
	Rolling Agenda	SC Chair	Report	
	Outreach reports	SC Chair	Report	

<b>March 10</b>	Meeting Minutes, Cafeteria Report, Donations, Warrants	SC Chair	Vote
	Personnel Report	Superintendent	Report
	Pre-K and Kindergarten Enrollment Updates	Superintendent	Report
	Monthly Budget Summary/Grants/Revl Accts	F&F	Vote
	FY27 Budget	F&F	Discussion
	FY27 Fees	F&F	Discussion
	Special Education Programming Update	EP&P	Report
	SOA Report	EP&P	Informational review
	Mid-year data	EP&P	Discussion
	Rolling Agenda	SC Chair	Report
	Outreach reports	SC Chair	Report
<b>March 24</b>	Meeting Minutes, Cafeteria Report, Donations, Warrants	SC Chair	Vote
	Pre-K and Kindergarten Enrollment Updates	Superintendent	Report
	FY27 Budget	F&F	Discussion
	Special Education Expense Report	F&F	Report
	Rolling Agenda	SC Chair	Report
	Outreach reports	SC Chair	Report
<b>April 14</b>	Meeting Minutes, Donations, Warrants	SC Chair	Vote
	Pre-K and Kindergarten Enrollment Updates	Superintendent	Report
	Personnel Report	Superintendent	Report
	Enrollment Report	Superintendent	Report
	FY27 Budget Hearing	F&F	n/a
	FY27 Budget Vote	F&F	Vote
	Rolling Agenda	SC Chair	Report
	Outreach reports	SC Chair	Report
<b>April 28</b>	Meeting Minutes, Donations, Warrants	SC Chair	Vote
	Student Assessments (state and local) Aligned with Strategic Plan	Superintendent	Report

	Pre-K and Kindergarten Enrollment Updates	Superintendent	Report
	Technology Plan	Superintendent	Report
	Special Education Expense Report	F&F	Report
	Monthly Budget Summary/Grants/Revl Accts	F&F	Vote
	Chartwells Update and FY27 Meal Prices	F&F	Vote
	Hold	EP&P	
	School Committee Subcommittees	P&P	Discussion
	Rolling Agenda	SC Chair	Report
	Outreach reports	SC Chair	Report
<b>May 5</b>	Meeting Minutes, Cafeteria Report, Donations, Warrants	SC Chair	Vote
	Pre-K and Kindergarten Enrollment Updates	Superintendent	Report
	Personnel Report	Superintendent	Report
	Monthly Budget Summary/Grants/Revl Accts	F&F	Vote
	Elementary Handbook	EP&P	Vote
	Program of Studies	EP&P	Report
	School Committee Subcommittees	P&P	Discussion
	Rolling Agenda	SC Chair	Report
	Outreach reports	SC Chair	Report
<b>May 19</b>	Meeting Minutes, Donations, Warrants	SC Chair	Vote
	Bridge Update	Superintendent	Report
	Special Education Expense Report	F&F	Report
	Summer DPW Building Plan	F&F	Report
	FY27 Enrollment Expectations	P&P	Report
	School Committee Subcommittees	P&P	Discussion
	Summer Plan: Remedial & Enrichment	EP&P	Report
	Curriculum Review Updates	EP&P	Report
	Superintendent Review	SC Chair	Report
	Rolling Agenda	SC Chair	Report
	Outreach reports	SC Chair	Report

<b>June 9</b>	Meeting Minutes; Cafeteria Report; Donations; Warrants	SC Chair	Report
	Personnel Report	Superintendent	Report
	Student Assessments (state and local) Aligned with Strategic Plan	Superintendent	Report
	End of Year Audit	F&F	Report
	Monthly Budget Summary/Grants/Revolving Accts.	F&F	Vote
	Special Education Expense Report	F&F	Report
	Update on End-of-Year Assessments	EP&P	Report
	Professional Development Plan	EP&P	Vote
	Site Councils Update	EP&P	Report
	Secondary Code of Conduct	EP&P	Vote
	Election of Student Representatives	SC Chair	Vote
	Supt. End of Cycle Evaluation: Report and Comments	SC Chair	Vote
	Rolling Agenda	SC Chair	Report
	Outreach reports	SC Chair	Report